

# FRY TOP S GAS M40 Brushed Chrome Plate - RIBBED - thermostat - on open cabinet

Project .....  
Rev.: .....  
Zone: .....  
Location: .....



CODICE  
CR1770679

MODELLO  
Q70SFTTV/G417

SERIE  
QUEEN 7

## GENERAL CHARACTERISTICS

For those who do not want to give up the quality and solidity of a Queen stove, the Series 7 offers a 700 mm depth and more compact dimensions to fit any room, burners available in various configurations and wattages, enhanced by the refined Scotch Brite finish.

Thanks to its extreme compositional freedom, every composition is possible: you can combine Model i tops with accessorizable oven and neutral bases and hygienic finishes; create customized solutions by matching and attaching equipment back to back, sideways "flush" perfectly sealed, or "bridge" structures, offering high-level solutions that always perfectly meet the chef's needs.

As a total guarantee, all equipment that make up a Queen7 kitchen are certified in compliance with international standards, including CE, GAR, AGA and others.



## TECHNICAL SPECIFICATIONS

Stainless steel outer shells and feet.

Height of the work surface adjustable from 840 to 900 mm.

Tops with a thickness of 2 mm.

Baking plate 15 mm thick totally independent of the top.

Large floodable channel around the perimeter of the hotplate for collecting cooking residues, sloping towards the front for draining liquids into the large drawer.

Firing plates made with satin-finished surface and surface coated with soft iron, AISI430 steel, or polished hard chrome, all available in smooth, mixed, or ribbed versions.

Large grease collection drawer.

Module sizes: 40,60,80

In the 120-width modules, the cooking plate is lowered from the top by 40 mm and tilted 10 mm toward the front of the machine.

Gas version: tubular burner with self-stabilized flame with great uniformity of heat distribution.

Temperature regulation by modulating tap (temperature above 300°C) or thermostatic safety valve with thermocouple (90-280°C).

Large fat collection drawer with capacity of the entire volume of the perimeter channel

Grooved plate design ensures cleanliness right to the end of the plate

Plate not welded to the machine bed with optimisation of structural points under thermal stress

Plate not welded to the machine bed with optimisation of structural points under thermal stress

Thermal cutting that facilitates the user and adjacent machinery.

Uniform cooking temperature across the entire plate. Optimising heat in the cooking area and increasing operator comfort in the kitchen.

Water dispenser kit available as an accessory

Brushed Chrome Cooking Plate, the innovative chrome plating technology adopted combines the strength of steel plates with the anti-oxidant properties of chrome plates, resulting in a slightly rough surface that improves resistance to cuts and bumps. Metal tools can be used directly on the plate without risking damage.

# FRY TOP S GAS M40 Brushed Chrome Plate - RIBBED - thermostat - on open cabinet

Project .....  
Rev.: .....  
Zone: .....  
Location: .....



CODICE  
CR1770679

MODELLO  
Q70SFTTV/G417

SERIE  
QUEEN 7

## Technical Information

SPECIFICATION	DATA
MATERIAL	CR1770679
COMMERCIAL LINE	QUEEN
SUPPLY	GAS
DIM. WIDTH	400 mm
DIM. PRODUCTIVITY	700 mm
DIM. HEIGHT	870 mm
NET WEIGHT	49 Kg
VOLUME (net)	0.244
PACKAGE LENGTH	440 mm
PACKAGING HEIGHT	1160 mm
PACKAGE VOLUME	0,435 m3
GROSS PACKING WEIGHT	58 Kg
GAS POWER	6
GAS POWER (G25.3/25mbar)	6,00

FRY TOP S GAS M40 Brushed Chrome Plate - RIBBED - thermostat - on open cabinet

Project .....  
Rev.: .....  
Zone: .....  
Location: .....

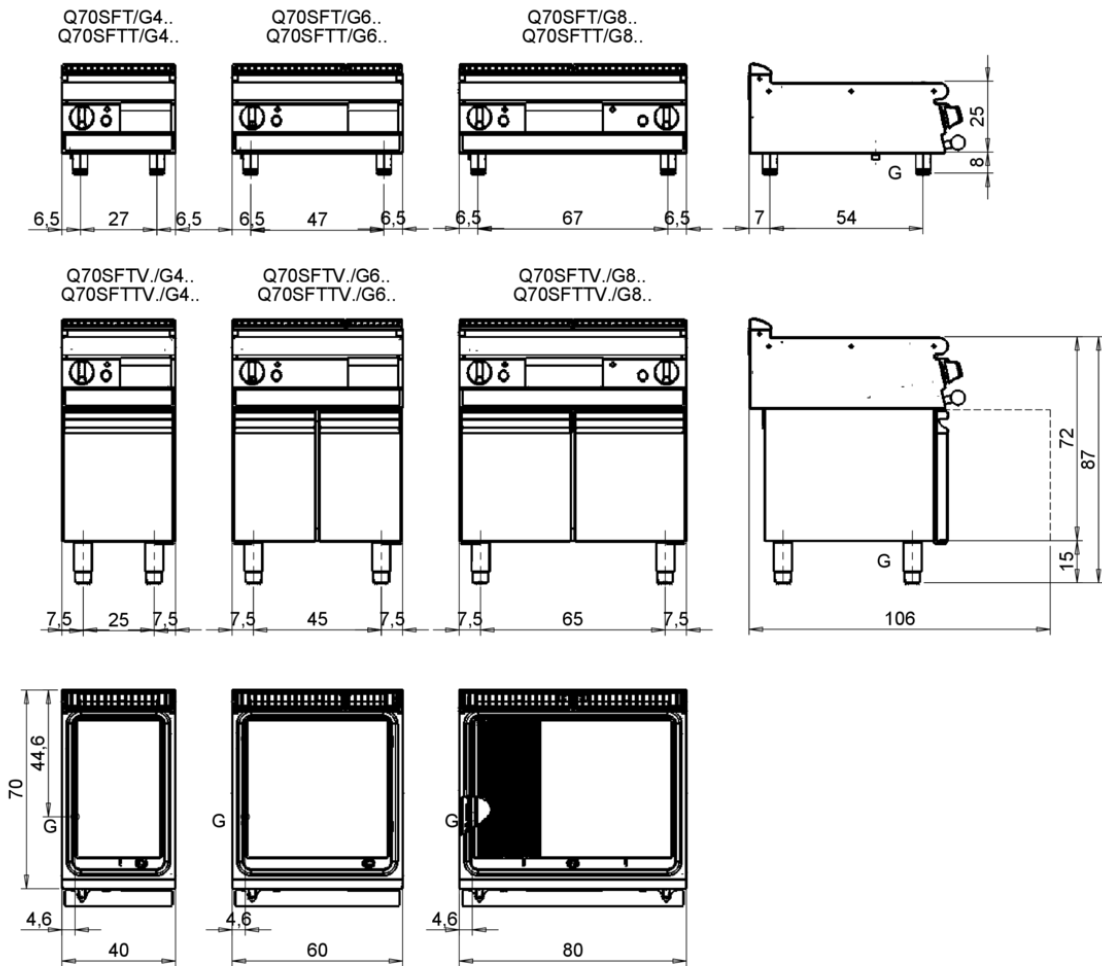


CODICE  
CR1770679

MODELLO  
Q70SFTTV/G417

SERIE  
QUEEN 7

MISURE IN cm - DIMENSIONS IN cm - ABMESSUNGEN IN cm- MESURES EN cm  
MEDIDAS EN cm - MATEN IN cm - DIMENSIONES EN cm



Legenda - Legende - Key - Légende - Leyenda - Legenda - Legenda	
<b>E</b> Pressacavo entrata linea elettrica - Stopfbuchse - Electric cable stress relief - Presse étoupe de câble él - Pisacable - Elektrische kabelwartel - Entrada cabo eléctrico	<b>G</b> Arrivo gas - Gasanschluss - Gas connection - Arrivée gaz - Union de gas - Gasaansluiting - Ligação gás <b>EN 10226-1 R 1/2; EN ISO 228-1 G 1/2 (DK)</b>
<b>S</b> Attacco scarico acqua - Wasserablauf - Water outlet - Vidange de l'eau - Desaguadero - Wateraftapaansluiting - Junção descarga água	<b>H20</b> Arrivo acqua - Wasseranschluss - Water inlet - Arrivée eau - Union de agua - Wateraansluiting - Junção alimentação água
<b>S1</b> Scarico vasca - Wannenabflussrohr - Pan outlet - Vidange du bac - Descarga cuba - Water toevoer - Descarga da cuba	<b>A1</b> = Calda - Heiss - Warm - Chaude - Caliente - Warm - Morno <b>A2</b> = Fredda - Kalt - Cold - Froid - Fria - Koude - Frio
<b>S2</b> Valvola di depressione - Anti-depression valve - Unterdruck ventil - Soupape de dépression - Válvula de depresi3n - Onderdrukklep - Válvula de depress3o	<b>L</b> Rubinetto di livello - Level tap - Wasserhahn - Robinet de niveau - Grifo de nivel - Niveaakraan - Torneira de nível
<b>S3</b> Scarico acqua intercapedine - Wasserablauf Zwischenraum - Jacket water drain Evacuation eau double envelope - Descarga de agua intersticios - Afvoer water tussenruimte - Descarga de água na marmitta com Sistema de aquecimento indirecto	
<b>S4</b> Scarico - Abflussrohr - Drain - Tuyau d'évacuation - Tubo de drenaje - Aftapbuis - Tubulaç3o de dreno	

# FRY TOP S GAS M40 Brushed Chrome Plate - RIBBED - thermostat - on open cabinet

Project .....  
Rev.: .....  
Zone: .....  
Location: .....



CODICE  
CR1770679

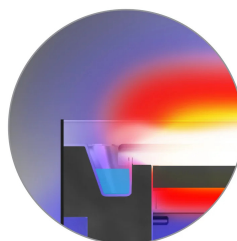
MODELLO  
Q70SFTTV/G417

SERIE  
QUEEN 7

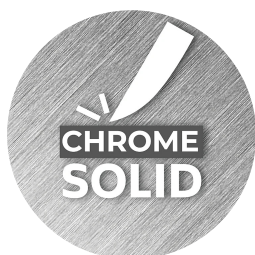
## PRODUCT'S RANGE PLUS



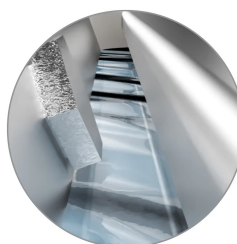
Available as an accessory, the continuous discharge tube allows waste to be disposed of in an external receptacle.



Thermal cutting that facilitates the user and adjacent machinery.



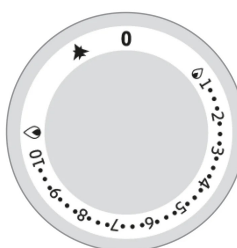
Brushed chrome plate surface designed to resist scratches and facilitate daily cleaning. complies with Regulation (EC) No. 1935/2004



Water dispenser kit available as an accessory



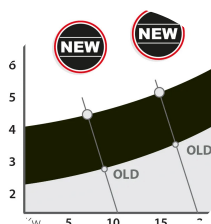
Grooved plate design ensures cleanliness right to the end of the plate



In the tap versions, the power is regulated by a Type 22PP enhanced flow tap that can be modulated for continuous operation to adapt the heat of the hotplate according to the type of cooking.



Non-welded plate to speed up maintenance and possible replacement in utilities.



New version with identical useful cooking surface area and reduced energy output. An increase in output per cm<sup>2</sup> that allows a reduction in consumption of up to 15% compared to conventional versions.

# FRY TOP S GAS M40 Brushed Chrome Plate - RIBBED - thermostat - on open cabinet

Project .....  
Rev.: .....  
Zone: .....  
Location: .....



CODICE  
CR1770679

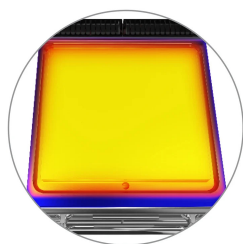
MODELLO  
Q70SFTTV/G417

SERIE  
QUEEN 7

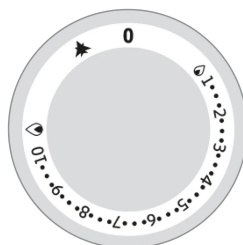
## PRODUCT'S RANGE PLUS



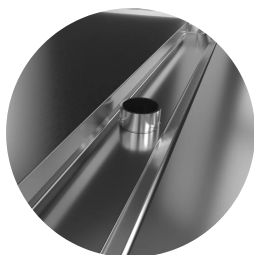
Floodable gutter for collecting cooking residue all around the perimeter of the plate easier cleaning, and better moisture retention of cooking food.



Uniform cooking temperature across the entire plate. Optimizing heat in the cooking area by increasing the comfort of operators in the kitchen.



In thermostat versions, the temperature of the hotplate can be adjusted from 90 to 280 °C to optimize consumption and adapt to the most delicate cooking.



Stainless steel overflow plug provided as standard for gutter flooding management.



Large fat collection drawer with capacity of the entire volume of the perimeter channel

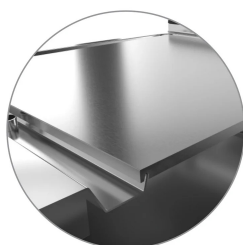


Plate not welded to the machine table with optimization of structural points subjected to thermal stress.

# FRY TOP S GAS M40 Brushed Chrome Plate - RIBBED - thermostat - on open cabinet

Project .....  
Rev.: .....  
Zone: .....  
Location: .....



CODICE  
CR1770679

MODELLO  
Q70SFTTV/G417

SERIE  
QUEEN 7

## ACCESSORIES

CODE	MODELLO	DESCRIZIONE
CR1354989	PRPC	Smooth plate cleaning scraper - chrome-plated
CR1356399	RPR	Striped chrome plate scraper
CR1658619	97CPFT4	M40 fry top cleaning drawer
CR1658609	97TFT	Plancha cleaning cap
CR1354999	PKLR	Replacement blades (10PCS)
CR1658639	7AFT4	M40 splash guard
CR1658839	Q794CAFT	WATER LOADING FOR FRY TOP M40 - 70 90 QUEEN - GAS OR ELECTRIC
CR1659099	Q74GKSCFT	CONTINUOUS EXHAUST FOR FRY TOP M40 - 70 QUEEN - GAS
CR1659129	Q74GCASCFT	CONTINUOUS LOAD + SCAR.FOR FRY TOP M40 - 70QUEEN - GAS
CR1659229	PAFT4	SUPER FRY TOP ACCESSORY HOLDER
CR1659259	AGMFT48	HOLDING GRID FOR FRY TOP
CR1659359	AKBFT-1	KIT 3 BOWLS GN1/9 H65 MM
CR1659369	AKBFT-2	KIT 2 BOWLS GN1/6 H65 MM
CR1659379	AKBFT-3	KIT 1 BASIN GN1/3 H65 MM