

2 BURNER GAS STOVE - TOP VERSION - 14 KW

Project
Rev.:
Zone:
Location:



CODICE
CR1355669

MODELLO
N6PC/G411P

SERIE
SERIE 600

GENERAL CHARACTERISTICS

A line of small-sized cooking equipment designed for those who, even in small spaces, do not want to give up great performance. Made of AISI 304 18/10 stainless steel, finely finished with Scotch Brite satin finish, it has rounded edges and large capacity enclosures; it has 600/650 mm depth and modular width of 400/600/700/800/1000 mm; the series is completed by open, armored or refrigerated base supports.

The equipment is easily modular to one another until it forms a compact, gap-free whole thanks to a leak-covering profile that provides protection against leakage and thus maximum hygiene. High chimneys, ergonomic knobs mounted on a sloping dashboard for easy visibility, give the range ease of use from the first approach.

All models are CE approved.



TECHNICAL SPECIFICATIONS

Hobs have power ratings that are characteristic of large models. Burners of 3.85 kW and 5.7 kW (7kw in the upgraded version). The cooktop is stamped in one piece, made of AISI 304 18/10 stainless steel with Scotch Brite finish, with large radii and large capacity for collecting overflowing liquids.

Enameled cast-iron grills to ensure long service life. Gas cooktops are designed with pilot flame, thermocouple and valved faucet to ensure

maximum safety.

Indicator lamp to signal energized equipment. GN 1/1 size ovens are available gas with adjustable temperature from 140-280°C, and electric both static and ventilated with adjustable temperature from 110 - 280°C.

2 BURNER GAS STOVE - TOP VERSION - 14 KW

Project
Rev.:
Zone:
Location:



CODICE
CR1355669

MODELLO
N6PC/G411P

SERIE
SERIE 600

Technical Information

SPECIFICATION	DATA
MATERIAL	CR1355669
DEFINITION	N6PC/G411 P 2 FUOCHI POTENZIATA 60 M40
COMMERCIAL LINE	SERIE 600
SUPPLY	GAS
DIM. WIDTH	400 mm
DIM. PRODUCTIVITY	650 mm
DIM. HEIGHT	295 mm
NET WEIGHT	14.4 Kg
VOLUME (net)	0.077
PACKAGE LENGTH	440 mm
PACKAGE WIDTH	780 mm
PACKAGING HEIGHT	680 mm
PACKAGE VOLUME	0,233 m3
GROSS PACKING WEIGHT	20 Kg
GAS POWER	15.4
GAS POWER (G25.3/25mbar)	13,20
N. FIRES/PLATES	DUE FUOCHI
CERTIFIED MODEL	N6PC/G411

2 BURNER GAS STOVE - TOP VERSION - 14 KW

Project
Rev.:
Zone:
Location:



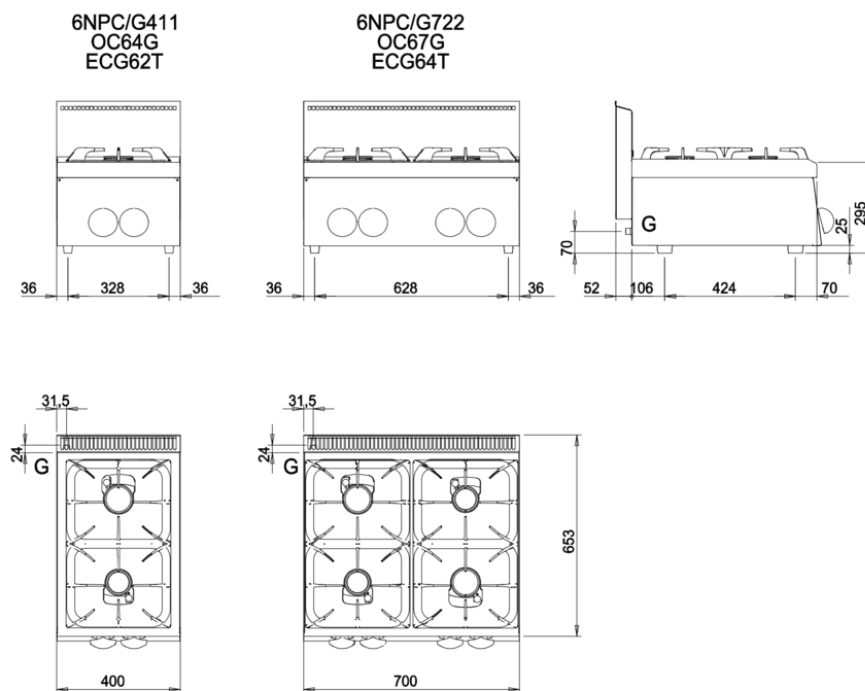
CODICE
CR1355669

MODELLO
N6PC/G411P

SERIE
SERIE 600

SCHEMA DI INSTALLAZIONE - INSTALLATION DIAGRAM - INSTALLATIONSPLAN - SCHÉMA D'INSTALLATION - ESQUEMA DE INSTALACION - INSTALLATIESCHEMA - IINSTALLATIONSRIITNINGAR

MISURE IN mm - DIMENSIONS IN mm - ABMESSUNGEN IN mm
MESURES EN mm - MEDIDAS EN mm - MATEN IN mm



LEGENDA - LEGENDE - KEY - LEGENDE - LEYENDA - LEGENDA

G Attacco arrivo gas - Gasanschluss - Gas connection -
Arrivée gaz - Union da gaas - Gasaansluiting
EN 10226-1 R 1/2; EN ISO 228-1 G 1/2 (DK)

2 BURNER GAS STOVE - TOP VERSION - 14 KW

Project
Rev.:
Zone:
Location:



CODICE
CR1355669

MODELLO
N6PC/G411P

SERIE
SERIE 600

PRODUCT'S RANGE PLUS



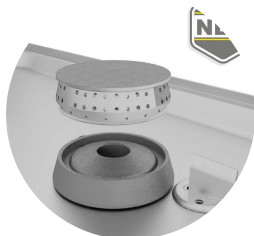
GN 1/1 ovens with stainless steel inner walls in the static gas version and static and ventilated electric ovens with armoured heating elements on the top and bottom.



Cast-iron grids on the top with long spokes allow even small pots to be placed on them.



Burners with power ratings of 3.85kW and 5.7kW (7kw in the enhanced version), valved taps and stabilized flame thermocouple to ensure maximum safety.



Cast-iron burner with removable crown for easy cleaning and separate pilot flame for optimal operation.