

# ELECTRIC FRY TOP PLATE 2/3 SMOOTH 1/3 RIBBED CHROME TOP VERSION

Project .....  
Rev.: .....  
Zone: .....  
Location: .....



CODICE  
CR1017439

MODELLO  
Q90FT/E1225

SERIE  
QUEEN 9

## GENERAL CHARACTERISTICS

It is the choice of those who need maximum strength and power. Queen9 is distinguished by its 900 mm depth, a 20/10-thick work surface, double-crown burners, and the use of elegant stainless steel with a Scotch Brite finish.

Details that not only offer maximum functionality and aesthetics, but also take into account the practical and ergonomic needs of those who work.

The extreme freedom of composition allows top models to be combined with accessorizable oven and neutral base units, even with hygienic finishes.

With more than 350 models immediately available in the catalog, Queen9 is already ready to start giving its best.

In addition, all equipment that makes up a Queen9 kitchen is certified in compliance with international standards, including CE, GAR, AGA and others.



## TECHNICAL SPECIFICATIONS

Cooking plate lowered from the plane by 4 cm and tilted 1 cm toward the front of the machine for grease drainage.

Large grease collecting drawer.

Available with soft iron plate or polished chrome plate.

High-power armored heating elements made of steels stainless steel.

Thermostatic safety control adjustable from 110 to 280°C for all versions.

Available in three versions:

- mild steel (for non-EU markets)
- in AISI 430
- in AISI 430

Plate welded to the hob that provides a larger cooking zone and eliminates dirt accumulation areas.

Plate with armoured incoloy heating elements placed under the bottom for cooking with temperature uniformity.

Chrome-plated plate.

Equipment certified for low voltage directive 2014/35/EU according to the international CB scheme.

Thanks to the jet-proofing certification (IPX5) obtained through specific tests, knobs and under-knobs can be washed at the end of the working day without compromising functionality and safety.

The front bar is a comfortable foothold for the cook; it keeps a safe distance from the worktop and thus protects against accidental collisions with what is resting on the worktops and at the same time the handles.

# ELECTRIC FRY TOP PLATE 2/3 SMOOTH 1/3 RIBBED CHROME TOP VERSION

Project .....  
Rev.: .....  
Zone: .....  
Location: .....



CODICE  
CR1017439

MODELLO  
Q90FT/E1225

SERIE  
QUEEN 9

## Technical Information

SPECIFICATION	DATA
MATERIAL	CR1017439
DEFINITION	Q90FT/E1225 FTE 1/3 RIG. CROM. M120 TOP
COMMERCIAL LINE	QUEEN
SUPPLY	ELECTRICS
DIM. WIDTH	1200 mm
DIM. PRODUCTIVITY	900 mm
DIM. HEIGHT	250 mm
NET WEIGHT	161 Kg
VOLUME (net)	0.27
PACKAGE LENGTH	440 mm
PACKAGE WIDTH	980 mm
PACKAGING HEIGHT	500 mm
PACKAGE VOLUME	0,540 m3
GROSS PACKING WEIGHT	171.8 Kg
STANDARD POWER SUPPLY	380-415V 3N
FREQUENCY	50-60 Hz
ELECTRICAL POWER	22.5 kW
IP GRADE	IPX5
CERTIFIED MODEL	Q90FT/E1225

ELECTRIC FRY TOP PLATE 2/3 SMOOTH 1/3 RIBBED  
CHROME TOP VERSION

Project .....  
Rev.: .....  
Zone: .....  
Location: .....



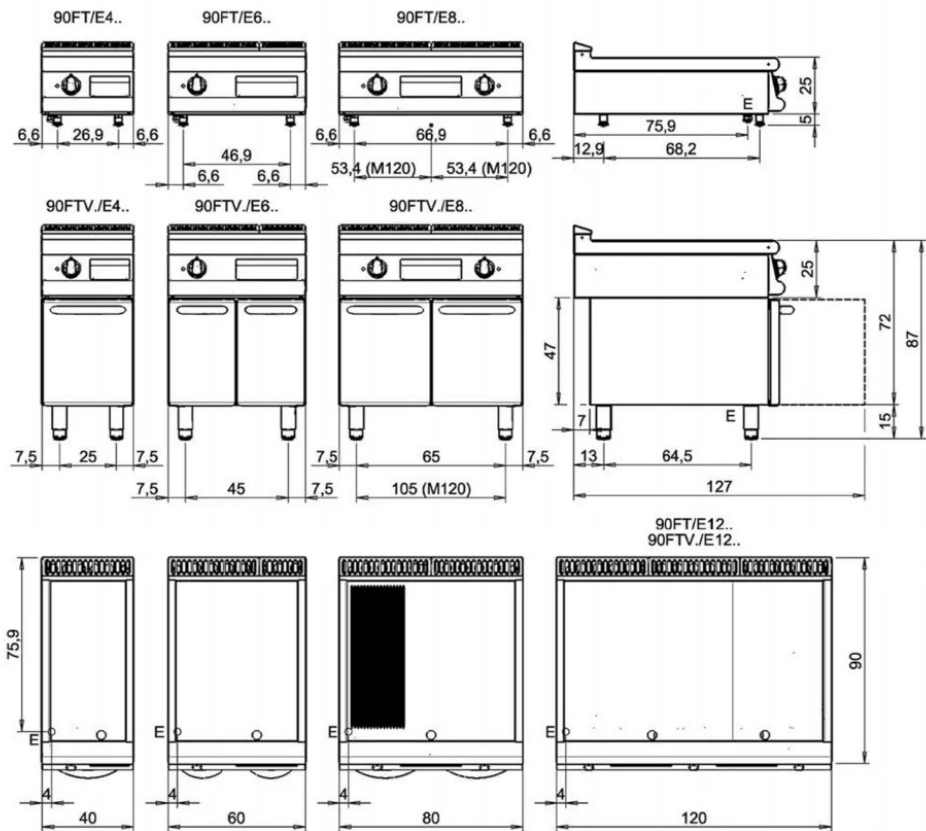
CODICE  
CR1017439

MODELLO  
Q90FT/E1225

SERIE  
QUEEN 9

SCHEMA DI INSTALLAZIONE - INSTALLATION DIAGRAM - INSTALLATIONSPLAN - SCHÉMA D'INSTALLATION -  
ESQUEMA DE INSTALACION -INSTALLATIESCHEMA - IINSTALLATIONSRTNINGAR

MISURE IN cm - DIMENSIONS IN cm - ABMESSUNGEN IN cm- MESURES EN cm  
MEDIDAS EN cm - MATEN IN cm - DIMENSIONES EN cm



Legenda - Legende - Key - Légende - Leyenda - Legenda - Legenda	
<b>E</b> Pressacavo entrata linea elettrica - Stopfbuchse - Electric cable stress relief - Presse étoupe de câble él - Pisacable - Elektrische kabelwartel - Entrada cabo eléctrico	<b>G</b> Arrivo gas - Gasanschluss - Gas connection - Arrivée gaz - Union de gas - Gasaansluiting - Ligação gás
<b>S</b> Attacco scarico acqua - Wasserablauf - Water outlet - Vidange de l'eau - Desaguadero - Wateraftapaansluiting - Junção descarga água	<b>H20</b> Arrivo acqua - Wasseranschluss - Water inlet - Arrivée eau - Union de agua - Wateraansluiting - Junção alimentação água
<b>S1</b> Scarico vasca - Wannenabflussrohr - Pan outlet - Vidange du bac - Descarga cuba - Water toevoer - Descarga da cuba	<b>A1 =</b> Calda - Heiss - Warm - Chaude - Caliente - Warm - Morno
<b>S2</b> Valvola di depressione - Anti-depression valve - Unterdruck ventili - Soupape de dépression - Válvula de depresión - Onderdrukkelep - Válvula de depressão	<b>A2 =</b> Fredda - Kalt - Cold - Froid - Fria - Koude - Frio
<b>S3</b> Scarico acqua intercapedine - Wasserablauf Zwischenraum - Jacket water drain Evacuation eau double envelope - Descarga de agua intersticios - Afvoer water tussenruimte - Descarga de água na marmitta com Sistema de aquecimento indirecto	
<b>S4</b> Scarico - Abflussrohr - Drain - Tuyau d'évacuation - Tubo de drenaje - Aftapbuis - Tubulação de dreno	<b>L</b> Rubinetto di livello - Level tap - Wasserhahn - Robinet de niveau - Grifo de nivel - Niveaakraan - Torneira de nível

# ELECTRIC FRY TOP PLATE 2/3 SMOOTH 1/3 RIBBED CHROME TOP VERSION

Project .....  
Rev.: .....  
Zone: .....  
Location: .....



CODICE  
CR1017439

MODELLO  
Q90FT/E1225

SERIE  
QUEEN 9

## PRODUCT'S RANGE PLUS

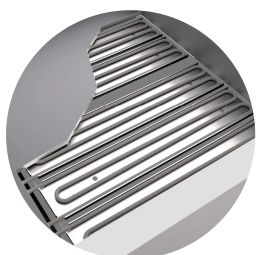


Plate with armoured incoloy heating elements placed under the bottom for cooking with temperature uniformity.



A 10-mm tilt of the plates toward the front of the machine allows for optimal grease outflow to the grease pan.



Plate welded to the hob that provides a larger cooking zone and eliminates dirt accumulation areas.

# ELECTRIC FRY TOP PLATE 2/3 SMOOTH 1/3 RIBBED CHROME TOP VERSION

Project .....  
Rev.: .....  
Zone: .....  
Location: .....



CODICE  
CR1017439

MODELLO  
Q90FT/E1225

SERIE  
QUEEN 9

## ACCESSORIES

CODE	MODELLO	DESCRIZIONE
CR0957610	90XFTP12	SPLASH GUARD FOR FRY TOP MODULE 120
CR0592079	NXFTC4	Fry top cleaning drawer M40-M120
CR0592089	NXFTC6/8	Fry top cleaning drawer M40-M60-M80-M120
CR1354989	PRPC	Smooth plate cleaning scraper - chrome-plated
CR1356399	RPR	Striped chrome plate scraper
CR1354999	PKLR	Replacement blades (10PCS)
CR0592060	NXFTT	PLANCHA CLEANING PLUG