

# FRY TOP S Electric M60 Chrome Plate - Smooth - On thermostat compartment

Project .....  
Rev.: .....  
Zone: .....  
Location: .....



CODICE  
CR1654949

MODELLO  
Q90SFTV/E605

SERIE  
QUEEN 9

## GENERAL CHARACTERISTICS

It is the choice of those who need maximum strength and power. Queen9 is distinguished by its 900 mm depth, a 20/10-thick work surface, double-crown burners, and the use of elegant stainless steel with a Scotch Brite finish.

Details that not only offer maximum functionality and aesthetics, but also take into account the practical and ergonomic needs of those who work.

The extreme freedom of composition allows top models to be combined with accessorizable oven and neutral base units, even with hygienic finishes.

With more than 350 models immediately available in the catalog, Queen9 is already ready to start giving its best.

In addition, all equipment that makes up a Queen9 kitchen is certified in compliance with international standards, including CE, GAR, AGA and others.



## TECHNICAL SPECIFICATIONS

Stainless steel outer shells and feet.

Height of the work surface adjustable from 840 to 900 mm.

Baking plate 15 mm thick totally independent of the top.

Large floodable channel around the perimeter of the hotplate for collecting cooking residues, sloping towards the front for draining liquids into the large drawer.

Firing plates made with satin-finished surface and surface coated with soft iron, AISI430 steel, or polished hard chrome, all available in smooth, mixed, or ribbed versions.

Large grease collection drawer.

Module sizes: 40,60,80

In the 120-width modules, the cooking plate is lowered from the top by 40 mm sloping 10 mm toward the front of the machine.

Electric version: heating by means of armoured incoloy heating elements.

Cooking temperature thermostatically controlled and adjustable from 110 to 280°C. Safety thermostat.

Large fat collection drawer with capacity of the entire volume of the perimeter channel

Grooved plate design ensures cleanliness right to the end of the plate

Plate not welded to the machine bed with optimisation of structural points under thermal stress

Plate not welded to the machine bed with optimisation of structural points under thermal stress

Thermal cutting that facilitates the user and adjacent machinery.

Uniform cooking temperature across the entire plate. Optimising heat in the cooking area and increasing operator comfort in the kitchen.

Water dispenser kit available as an accessory

# FRY TOP S Electric M60 Chrome Plate - Smooth - On thermostat compartment

Project .....  
Rev.: .....  
Zone: .....  
Location: .....



CODICE  
CR1654949

MODELLO  
Q90SFTV/E605

SERIE  
QUEEN 9

## Technical Information

| SPECIFICATION         | DATA                                  |
|-----------------------|---------------------------------------|
| MATERIAL              | CR1654949                             |
| DEFINITION            | Q90SFTV/E605 FTE LISCIO CROM. M60 A/G |
| COMMERCIAL LINE       | QUEEN                                 |
| SUPPLY                | ELECTRICS                             |
| DIM. WIDTH            | 600 mm                                |
| DIM. PRODUCTIVITY     | 900 mm                                |
| DIM. HEIGHT           | 870 mm                                |
| NET WEIGHT            | 84 Kg                                 |
| VOLUME (net)          | 0.47                                  |
| PACKAGE LENGTH        | 640 mm                                |
| PACKAGE WIDTH         | 890 mm                                |
| PACKAGING HEIGHT      | 1230 mm                               |
| PACKAGE VOLUME        | 0,702 m3                              |
| GROSS PACKING WEIGHT  | 97.6 Kg                               |
| STANDARD POWER SUPPLY | 380-415V 3N                           |
| FREQUENCY             | 50-60 Hz                              |
| ELECTRICAL POWER      | 7.5 kW                                |
| IP GRADE              | IPX5                                  |
| CERTIFIED MODEL       | Q90SFTV/E605                          |

FRY TOP S Electric M60 Chrome Plate - Smooth - On  
thermostat compartment

CODICE  
CR1654949

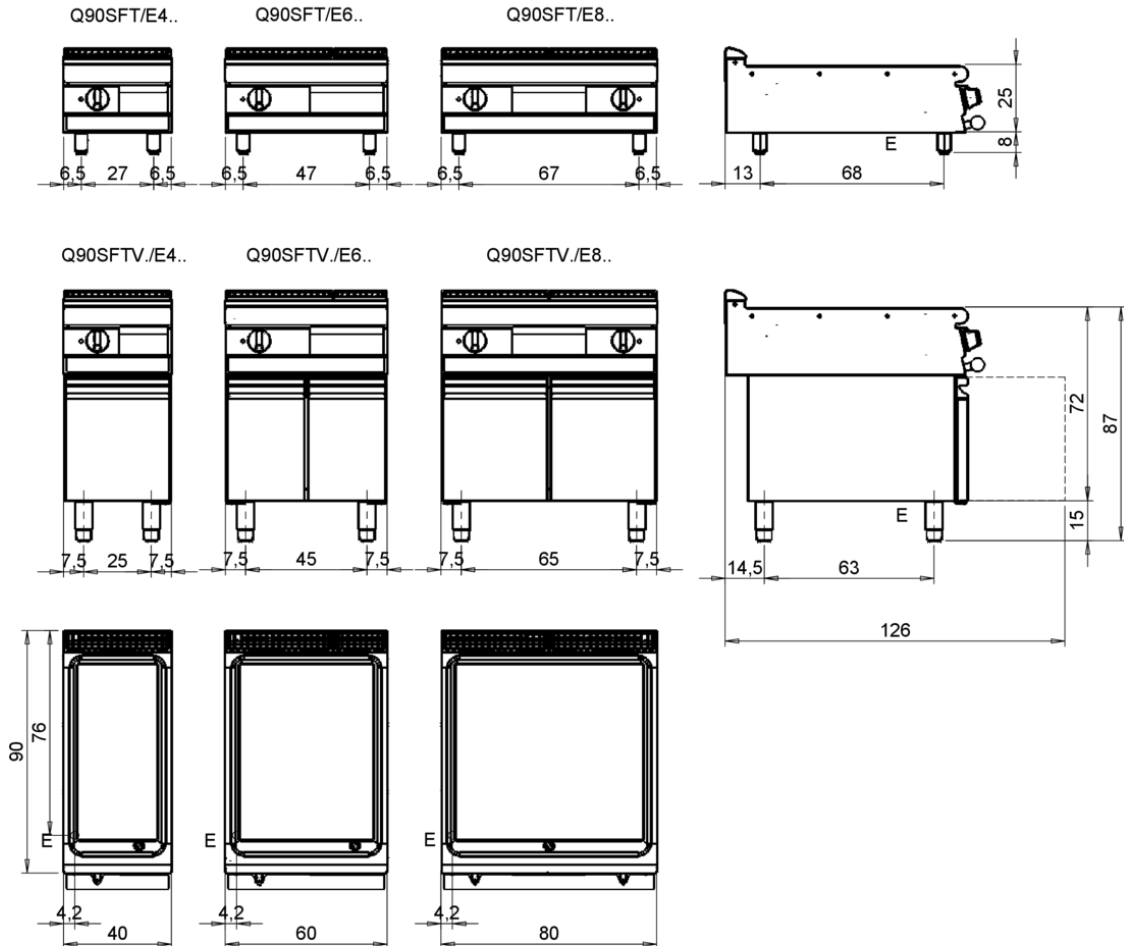
MODELLO  
Q90SFTV/E605

SERIE  
QUEEN 9

Project .....  
Rev.: .....  
Zone: .....  
Location: .....



MISURE IN cm - DIMENSIONS IN cm - ABMESSUNGEN IN cm- MESURES EN cm  
MEDIDAS EN cm - MATEN IN cm - DIMENSIONES EN cm



Legenda - Legende - Key - Légende - Leyenda - Legenda - Legenda

|   |   |
|---|---|
| <b>E</b> Pressacavo entrata linea elettrica - Stopfbuchse - Electric cable stress relief - Presse étoupe de câble él - Pisacable - Elektrische kabelwartel - Entrada cabo eléctrico   | <b>G</b> Arrivo gas - Gasanschluss - Gas connection - Arrivée gaz - Union de gas - Gasaansluiting - Ligação gás                       |
| <b>S</b> Attacco scarico acqua - Wasserablauf - Water outlet - Vidange de l'eau - Desaguadero - Wateraftapaansluiting - Junção descarga água  | <b>H20</b> Arrivo acqua - Wasseranschluss - Water inlet - Arrivée eau - Union de agua - Wateraansluiting - Junção alimentação água    |
| <b>S1</b> Scarico vasca - Wannenabflussrohr - Pan outlet - Vidange du bac - Descarga cuba - Water toevoer - Descarga da cuba  | <b>A1</b> = Calda - Heiss - Warm - Chaude - Caliente - Warm - Morno<br><b>A2</b> = Fredda - Kalt - Cold - Froid - Fria - Koude - Frio |
| <b>S2</b> Valvola di depressione - Anti-depression valve - Unterdruck ventil - Soupape de dépression - Válvula de depresión - Onderdrukkelep - Válvula de depressão   |   |
| <b>S3</b> Scarico acqua intercapedine - Wasserablauf Zwischenraum - Jacket water drain Evacuation eau double envelope - Descarga de agua intersticios - Afvoer water tussenruimte - Descarga de água na marmitta com Sistema de aquecimento indirecto |   |
| <b>S4</b> Scarico - Abflussrohr - Drain - Tuyau d'évacuation - Tubo de drenaje - Aftapbuis - Tubulação de dreno   | <b>L</b> Rubinetto di livello - Level tap - Wasserhahn - Robinet de niveau - Grifo de nivel - Niveaakraan - Torneira de nível         |

# FRY TOP S Electric M60 Chrome Plate - Smooth - On thermostat compartment

Project .....  
Rev.: .....  
Zone: .....  
Location: .....



CODICE  
CR1654949

MODELLO  
Q90SFTV/E605

SERIE  
QUEEN 9

## PRODUCT'S RANGE PLUS



Thermal cutting that facilitates the user and adjacent machinery.



Water dispenser kit available as an accessory



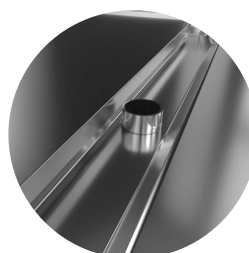
Grooved plate design ensures cleanliness right to the end of the plate



Non-welded plate to speed up maintenance and possible replacement in utilities.



New version with identical useful cooking surface area and reduced energy output. An increase in output per cm2 that allows a reduction in consumption of up to 15% compared to conventional versions.



Stainless steel overflow plug provided as standard for gutter flooding management.



Available as an accessory, the continuous discharge tube allows waste to be disposed of in an external receptacle.

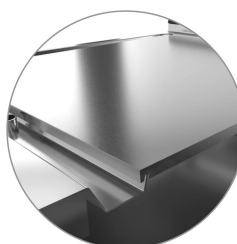


Plate not welded to the machine table with optimization of structural points subjected to thermal stress.

# FRY TOP S Electric M60 Chrome Plate - Smooth - On thermostat compartment

Project .....  
Rev.: .....  
Zone: .....  
Location: .....



CODICE  
CR1654949

MODELLO  
Q90SFTV/E605

SERIE  
QUEEN 9

## PRODUCT'S RANGE PLUS



Floodable gutter for collecting cooking residue all around the perimeter of the plate easier cleaning, and better moisture retention of cooking food.



Uniform cooking temperature across the entire plate. Optimising heat in the cooking area and increasing operator comfort in the kitchen.



Capacious grease collection drawer with capacity of the entire volume of the perimeter channel.

# FRY TOP S Electric M60 Chrome Plate - Smooth - On thermostat compartment

Project .....  
Rev.: .....  
Zone: .....  
Location: .....



CODICE  
CR1654949

MODELLO  
Q90SFTV/E605

SERIE  
QUEEN 9

## ACCESSORIES

| CODE      | MODELLO    | DESCRIZIONE   |
|-----------|------------|---|
| CR1354989 | PRPC       | Smooth plate cleaning scraper - chrome-plated                     |
| CR1356399 | RPR        | Striped chrome plate scraper                                      |
| CR0592089 | NXFTC6/8   | Fry top cleaning drawer M40-M60-M80-M120                          |
| CR1354999 | PKLR       | Replacement blades (10PCS)  |
| CR1658679 | 9AFT6      | SPLASH GUARD FOR FRY TOP MODULE 600                               |
| CR1658609 | 97TFT      | Plancha cleaning cap  |
| CR1658849 | Q7968CAF   | WATER LOADING FOR FRY TOP M60 M80 - 70 90 QUEEN - GAS OR ELECTRIC |
| CR1658929 | Q96EKSCFT  | CONTINUOUS DRAIN FOR FRY TOP M60 - 90 QUEEN - ELECTRIC            |
| CR1658959 | Q96ECASCFT | CONTINUOUS LOAD + SCAR.FOR FRY TOP M60 - 90 QUEEN - ELECTRIC      |
| CR1659239 | PAFT6      | SUPER FRY TOP ACCESSORY HOLDER M60                                |
| CR1659259 | AGMFT48    | HOLDING GRID FOR FRY TOP  |
| CR1659269 | AGMFT6     | HOLDING GRID FOR FRY TOP  |
| CR1659359 | AKBFT-1    | KIT 3 BOWLS GN1/9 H65 MM  |
| CR1659369 | AKBFT-2    | KIT 2 BOWLS GN1/6 H65 MM  |
| CR1659379 | AKBFT-3    | KIT 1 BASIN GN1/3 H65 MM  |