

GAS FRY TOP 2/3 SMOOTH 1/3 RIBBED AISI 430 PLATE ON OPEN COMPARTMENT - THERMOSTAT- CONTROLLED

Project
Rev.:
Zone:
Location:



CODICE
CR1350529

MODELLO
Q90FTTV/G1223

SERIE
QUEEN 9

GENERAL CHARACTERISTICS

It is the choice of those who need maximum strength and power. Queen9 is distinguished by its 900 mm depth, a 20/10-thick work surface, double-crown burners, and the use of elegant stainless steel with a Scotch Brite finish.

Details that not only offer maximum functionality and aesthetics, but also take into account the practical and ergonomic needs of those who work.

The extreme freedom of composition allows top models to be combined with accessorizable oven and neutral base units, even with hygienic finishes.

With more than 350 models immediately available in the catalog, Queen9 is already ready to start giving its best.

In addition, all equipment that makes up a Queen9 kitchen is certified in compliance with international standards, including CE, GAR, AGA and others.



TECHNICAL SPECIFICATIONS

Cooking plate lowered from the plane by 4 cm and tilted 1 cm toward the front of the machine for grease drainage.

Large grease collecting drawer.

Available with soft iron plate or polished chrome plate.

Stabilized flame burners with piezo ignition.

Independent controls every 1/2 module.

Temperature regulation from 200°C to 400°C with thermocouple safety tap or from 100°C to 280°C with thermostatic valve.

For the chrome version, the adjustment ranges from 100° to 280°.

Available in three versions:

- mild steel (for non-EU markets)
- in AISI 430
- chrome-plated

Plate welded to the hob that provides a larger cooking zone and eliminates dirt accumulation areas.

Even heat distribution thanks to several burners under the hotplate.

AISI430 plate.

Temperature regulation from 100°C to 280°C

Thanks to the jet-proofing certification (IPX5) obtained through specific tests, knobs and under-knobs can be washed at the end of the working day without compromising functionality and safety.

The front bar is a comfortable foothold for the cook; it keeps a safe distance from the worktop and thus protects against accidental collisions with what is resting on the worktops and at the same time the handles.

GAS FRY TOP 2/3 SMOOTH 1/3 RIBBED AISI 430 PLATE ON OPEN COMPARTMENT - THERMOSTAT- CONTROLLED

Project
Rev.:
Zone:
Location:



CODICE
CR1350529

MODELLO
Q90FTTV/G1223

SERIE
QUEEN 9

Technical Information

SPECIFICATION	DATA
MATERIAL	CR1350529
DEFINITION	Q90FTTV/G1223 FTG 1/3 RIG. M120 430 A/G
COMMERCIAL LINE	QUEEN
SUPPLY	GAS
DIM. WIDTH	1200 mm
DIM. PRODUCTIVITY	900 mm
DIM. HEIGHT	870 mm
NET WEIGHT	133 Kg
VOLUME (net)	0.94
PACKAGE LENGTH	440 mm
PACKAGE WIDTH	980 mm
PACKAGING HEIGHT	500 mm
PACKAGE VOLUME	0,960 m3
GROSS PACKING WEIGHT	148 Kg
GAS POWER	31.5
GAS POWER (G25.3/25mbar)	30,00
GAS/REFRIGERANT TYPE	GPL 28-30/37 mbar
CERTIFIED MODEL	Q90FTTV/G1223

GAS FRY TOP 2/3 SMOOTH 1/3 RIBBED AISI 430 PLATE
ON OPEN COMPARTMENT - THERMOSTAT-
CONTROLLED

Project
Rev.:
Zone:
Location:



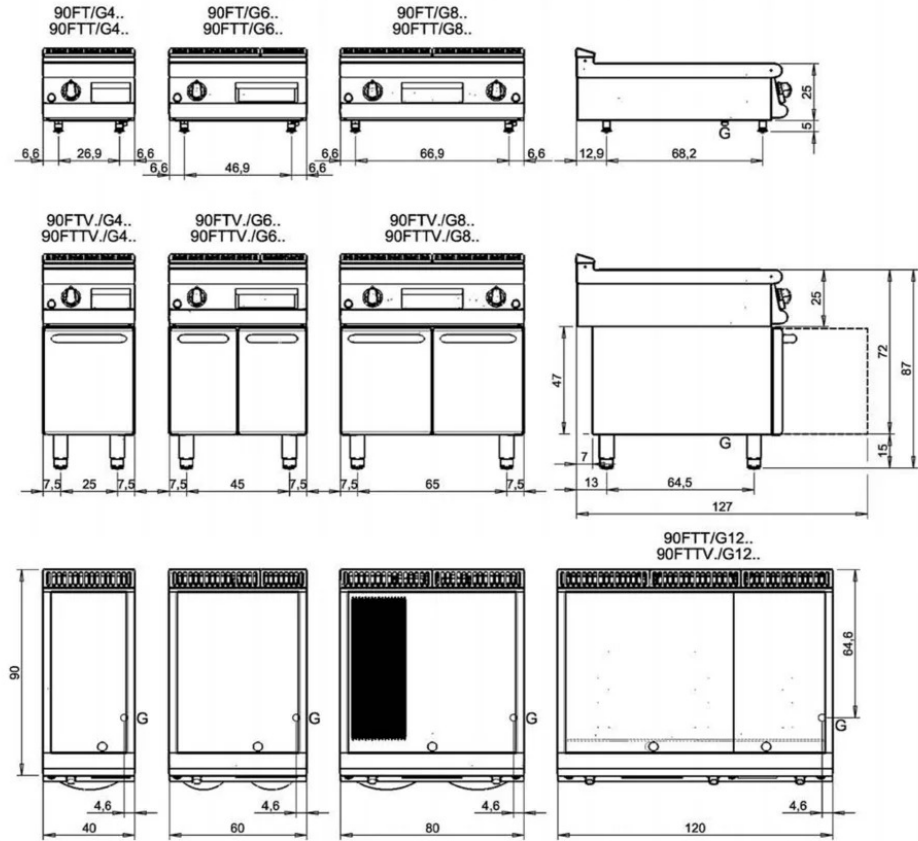
CODICE
CR1350529

MODELLO
Q90FTTV/G1223

SERIE
QUEEN 9

SCHEMA DI INSTALLAZIONE - INSTALLATION DIAGRAM - INSTALLATIONSPLAN - SCHÉMA D'INSTALLATION -
ESQUEMA DE INSTALACION -INSTALLATIESCHEMA - IINSTALLATIONSRTNINGAR

MISURE IN cm - DIMENSIONS IN cm - ABMESSUNGEN IN cm- MESURES EN cm
MEDIDAS EN cm - MATEN IN cm - DIMENSIONES EN cm



Legenda - Legende - Key - Légende - Leyenda - Legenda - Legenda	
E Pressacavo entrata linea elettrica - Stopfbuchse - Electric cable stress relief - Presse étoupe de câble él - Pisicable - Elektrische kabelwartel - Entrada cabo eléctrico	G Arrivo gas - Gasanschluss - Gas connection - Arrivée gaz - Union de gas - Gasaansluiting - Ligação gás EN 10226-1 R 1/2; EN ISO 228-1 G 1/2 (DK)
S Attacco scarico acqua - Wasserablauf - Water outlet - Vidange de l'eau - Desaguadero - Wateraftapaansluiting - Junção descarga água	H20 Arrivo acqua - Wasseranschluss - Water inlet - Arrivée eau - Union de água - Wateraansluiting - Junção alimentação água
S1 Scarico vasca - Wannenabflussrohr - Pan outlet - Vidange du bac - Descarga cuba - Water toevoer - Descarga da cuba	A1 = Calda - Heiss - Warm - Chaude - Caliente - Warm - Morno
S2 Valvola di depressione - Anti-depression valve - Unterdruck ventili - Soupape de dépression - Válvula de depresión - Onderdrukkelep - Válvula de depressão	A2 = Fredda - Kalt - Cold - Froid - Fria - Koude - Frio
S3 Scarico acqua intercapedine - Wasserablauf Zwischenraum - Jacket water drain Evacuation eau double envelope - Descarga de água interstícios - Afvoer water tussenruimte - Descarga de água na marmita com Sistema de aquecimento indirecto	L Rubinetto di livello - Level tap - Wasserhahn - Robinet de niveau - Grifo de nivel - Niveaakraan - Tomeira de nível
S4 Scarico - Abflussrohr - Drain - Tuyau d'évacuation - Tubo de drenaje - Aftapbuis - Tubulação de dreno	

**GAS FRY TOP 2/3 SMOOTH 1/3 RIBBED AISI 430 PLATE
ON OPEN COMPARTMENT - THERMOSTAT-
CONTROLLED**

Project
Rev.:
Zone:
Location:



CODICE
CR1350529

MODELLO
Q90FTTV/G1223

SERIE
QUEEN 9

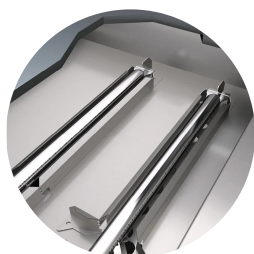
PRODUCT'S RANGE PLUS



A 10-mm tilt of the plates toward the front of the machine allows for optimal grease outflow to the grease pan.



Plate welded to the hob that provides a larger cooking zone and eliminates dirt accumulation areas.



Even heat distribution thanks to several burners under the hotplate.

GAS FRY TOP 2/3 SMOOTH 1/3 RIBBED AISI 430 PLATE ON OPEN COMPARTMENT - THERMOSTAT- CONTROLLED

Project
Rev.:
Zone:
Location:



CODICE
CR1350529

MODELLO
Q90FTTV/G1223

SERIE
QUEEN 9

ACCESSORIES

CODE	MODELLO	DESCRIZIONE
CR0957610	90XFTP12	SPLASH GUARD FOR FRY TOP MODULE 120
CR0592079	NXFTC4	Fry top cleaning drawer M40-M120
CR0592089	NXFTC6/8	Fry top cleaning drawer M40-M60-M80-M120
CR1354989	PRPC	Smooth plate cleaning scraper - chrome-plated
CR1356399	RPR	Striped chrome plate scraper
CR1354999	PKLR	Replacement blades (10PCS)
CR0592060	NXFTT	PLANCHA CLEANING PLUG