

NEUTRAL ELEMENT - TOP VERSION

Project
Rev.:
Zone:
Location:



CODICE
CR1010029

MODELLO
N550NE/900

SERIE
SERIE GIANO

GENERAL CHARACTERISTICS

The Giano pass-through Series appliances are characterized by their great versatility, the perfect combination of modules, and their robustness, thanks to 2 mm thick laser-cut AISI 304 cooking surfaces.

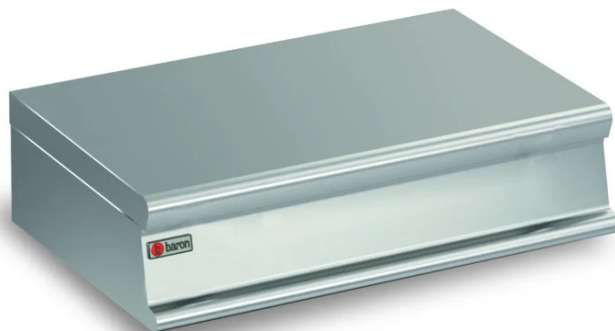
These peculiarities make it possible to make firing blocks according to specific customer requirements.

Reliability and high efficiency are ensured by the use of tested components and the high efficiency of the heating elements used.

Support bases can be equipped with pass-through ovens, ventilated hot cabinets, neutral, or cantilevered or bridged.

Machines all complying with CE regulations.

RAL paint treatment can be requested.



TECHNICAL SPECIFICATIONS

NEUTRAL ELEMENT - TOP VERSION

Project
Rev.:
Zone:
Location:



CODICE
CR1010029

MODELLO
N550NE/900

SERIE
SERIE GIANO

Technical Information

SPECIFICATION	DATA
MATERIAL	CR1010029
DEFINITION	N550NE/900 ELEMENTO NEUTRO M90 TOP
COMMERCIAL LINE	SERIE 1100
DIM. WIDTH	900 mm
DIM. PRODUCTIVITY	550 mm
DIM. HEIGHT	280 mm
NET WEIGHT	74.12 Kg
VOLUME (net)	0.139
PACKAGE LENGTH	1020 mm
PACKAGE WIDTH	1260 mm
PACKAGING HEIGHT	620 mm
PACKAGE VOLUME	0,800 m3
GROSS PACKING WEIGHT	87.2 Kg

Project
Rev.:
Zone:
Location:



NEUTRAL ELEMENT - TOP VERSION

CODICE
CR1010029

MODELLO
N550NE/900

SERIE
SERIE GIANO