

6-BURNER GAS COOKER ON GAS OVEN AND NEUTRAL CABINET

Project
Rev.:
Zone:
Location:



CODICE
CR1015689

MODELLO
Q90PCF/G1201

SERIE
QUEEN 9

GENERAL CHARACTERISTICS

It is the choice of those who need maximum strength and power. Queen9 is distinguished by its 900 mm depth, a 20/10-thick work surface, double-crown burners, and the use of elegant stainless steel with a Scotch Brite finish.

Details that not only offer maximum functionality and aesthetics, but also take into account the practical and ergonomic needs of those who work.

The extreme freedom of composition allows top models to be combined with accessorizable oven and neutral base units, even with hygienic finishes.

With more than 350 models immediately available in the catalog, Queen9 is already ready to start giving its best.

In addition, all equipment that makes up a Queen9 kitchen is certified in compliance with international standards, including CE, GAR, AGA and others.



TECHNICAL SPECIFICATIONS

Entirely moulded top made from thick stainless steel plate.

Enamelled cast-iron grills with long spokes for easy movement of pans between fires.

Optional stainless rod grates available.

High power cast-iron burners (3.5- 5.7- 7 and 10 kW). Piezoelectric ignition of burners available as an option.

Removable stainless steel bi-fire bowl accessory.

Enamelled cast-iron grills with long spokes for easy movement of pans between fires.

High power cast iron burners 3.5- 5.7- 7 and 10 kW.

Protected pilot flame with removable and easily washable protection.

Thanks to the jet-proofing certification (IPX5) obtained through specific tests, knobs and under-knobs can be washed at the end of the working day without compromising functionality and safety.

The front bar is a comfortable foothold for the cook; it keeps a safe distance from the worktop and thus protects against accidental collisions with what is resting on the worktops and at the same time the handles.

6-BURNER GAS COOKER ON GAS OVEN AND NEUTRAL CABINET

Project
Rev.:
Zone:
Location:



CODICE
CR1015689

MODELLO
Q90PCF/G1201

SERIE
QUEEN 9

Technical Information

| SPECIFICATION | DATA |
|--------------------------|-----------------------------|
| MATERIAL | CR1015689 |
| DEFINITION | Q90PCF/G1201 6F C/FORNO GAS |
| COMMERCIAL LINE | QUEEN |
| SUPPLY | GAS |
| DIM. WIDTH | 1200 mm |
| DIM. PRODUCTIVITY | 900 mm |
| DIM. HEIGHT | 870 mm |
| NET WEIGHT | 195 Kg |
| VOLUME (net) | 0.94 |
| PACKAGE LENGTH | 1240 mm |
| PACKAGE WIDTH | 1020 mm |
| PACKAGING HEIGHT | 1130 mm |
| PACKAGE VOLUME | 1,430 m3 |
| GROSS PACKING WEIGHT | 221 Kg |
| GAS POWER | 40.9 |
| GAS POWER (G25.3/25mbar) | 40,90 |
| GAS/REFRIGERANT TYPE | METANO "H, E" G20 20/25mbar |
| N. FIRES/PLATES | SEI FUOCHI |
| CERTIFIED MODEL | Q90PCF/G1201 |

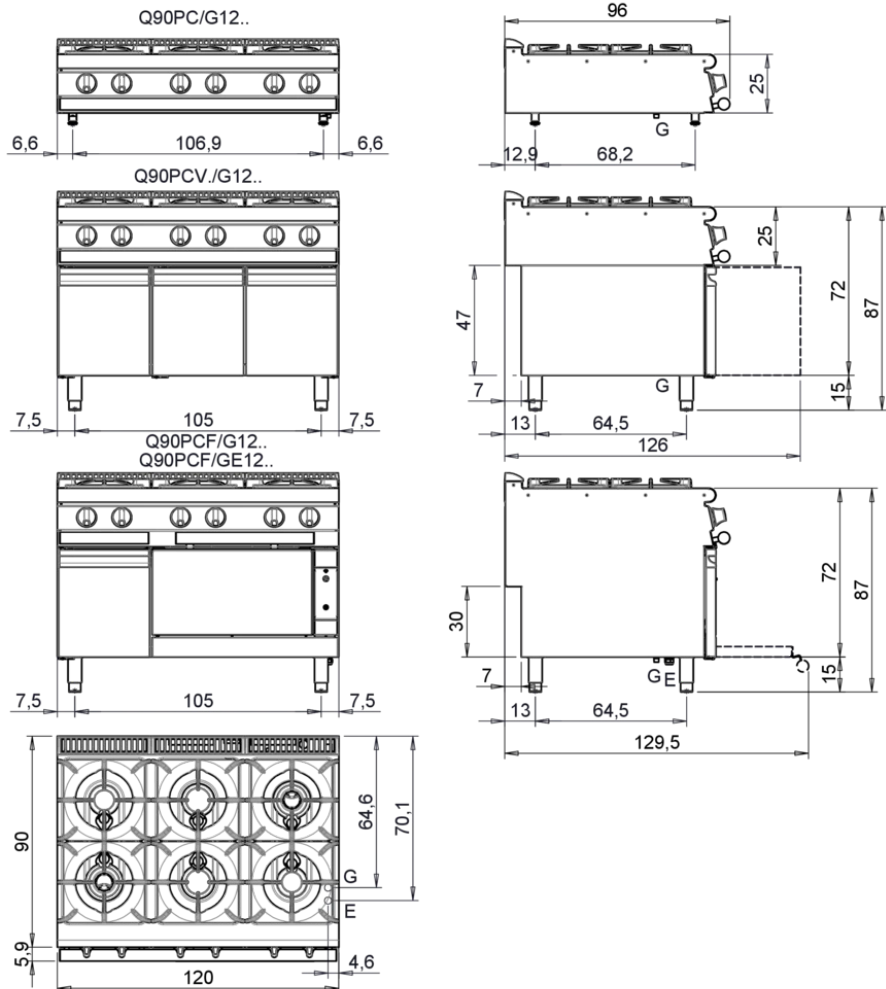
6-BURNER GAS COOKER ON GAS OVEN AND
NEUTRAL CABINET

| | | |
|---------------------|-------------------------|------------------|
| CODICE CR1015689 | MODELLO Q90PCF/G1201 | SERIE QUEEN 9 |
|---------------------|-------------------------|------------------|

Project
Rev.:
Zone:
Location:



MISURE IN cm - DIMENSIONS IN cm - ABMESSUNGEN IN cm- MESURES EN cm
MEDIDAS EN cm - MATEN IN cm - DIMENSIONES EN cm



| Legenda - Legende - Key - Légende - Leyenda - Legenda - Legenda | |
|---|---|
| E Pressacavo entrata linea elettrica - Stopfbuchse - Electric cable stress relief - Presse étoupe de câble él - Pisacable - Elektrische kabelwartel - Entrada cabo eléctrico | G Arrivo gas - Gasanschluss - Gas connection - Arrivée gaz - Union de gas - Gasaansluiting - Ligação gás EN 10226-1 R 1/2; EN ISO 228-1 G 1/2 (DK) |
| S Attacco scarico acqua - Wasserablauf - Water outlet - Vidange de l'eau - Desaguadero - Wateraftapaansluiting - Junção descarga água | H20 Arrivo acqua - Wasseranschluss - Water inlet - Arrivée eau - Union de água - Wateraansluiting - Junção alimentação água |
| S1 Scarico vasca - Wannenabflussrohr - Pan outlet - Vidange du bac - Descarga cuba - Water toevoer - Descarga da cuba | A1 = Calda - Heiss - Warm - Chaude - Caliente - Warm - Morno A2 = Fredda - Kalt - Cold - Froid - Fria - Koude - Frio |
| S2 Valvola di depressione - Anti-depression valve - Unterdruck ventil - Soupape de dépression - Válvula de depresión - Onderdrukkelep - Válvula de depressão | |
| S3 Scarico acqua intercapedine - Wasserablauf Zwischenraum - Jacket water drain Evacuation eau double envelope - Descarga de água interstícios - Afvoer water tussenruimte - Descarga de água na marmitta com Sistema de aquecimento indirecto | |
| S4 Scarico - Abflussrohr - Drain - Tuyau d'évacuation - Tubo de drenaje - Aftapbuis - Tubulação de dreno | L Rubinetto di livello - Level tap - Wasserhahn - Robinet de niveau - Grifo de nivel - Niveaakraan - Torneira de nível |

6-BURNER GAS COOKER ON GAS OVEN AND NEUTRAL CABINET

Project
Rev.:
Zone:
Location:



CODICE
CR1015689

MODELLO
Q90PCF/G1201

SERIE
QUEEN 9

PRODUCT'S RANGE PLUS



Protected pilot flame with removable and easily washable protection.



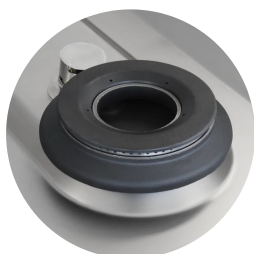
Self-cleaning version with liquid drain hole, electric ignition and flat connection kit AVAILABLE ON REQUEST



Entirely moulded top made from thick stainless steel plate.



Enameled cast-iron grills with long spokes for easy movement of pans between fires.



High power cast iron burners 3.5-5.7- 7 and 10 kW.

6-BURNER GAS COOKER ON GAS OVEN AND NEUTRAL CABINET

Project
Rev.:
Zone:
Location:



CODICE
CR1015689

MODELLO
Q90PCF/G1201

SERIE
QUEEN 9

ACCESSORIES

| CODE | MODELLO | DESCRIZIONE |
|----------------|------------------|---|
| BN418031910030 | PRL | Radiant plate for 1 fire |
| BN418031910040 | PRR | Radiant plate for 1 fire |
| BN418031920020 | 9GF | GN2/1 chrome oven rack |
| BN418031910180 | N9BA | Removable bowl for 2 burners |
| CR1353959 | CR1353959 | Stainless rod bi-fire grate |
| BN41C1500086 | ACC2FP | Electric ignition |
| BN41C1500087 | ACC4FP | Electric ignition |
| BN41C1700144 | ACC6FP | Electric ignition |
| AES-2F | AES-2F | Surcharge for version with self-cleaning top - optional to be requested when ordering |
| AES-4F | AES-4F | Surcharge for version with self-cleaning top - optional to be requested when ordering |
| AES-6F | AES-6F | Surcharge for version with self-cleaning top - optional to be requested when ordering |
| AES-8F | AES-8F | Surcharge for version with self-cleaning top - optional to be requested when ordering |