

FRY TOP S Electric M40 Iron Plate - Smooth - On thermostat compartment

Project
Rev.:
Zone:
Location:



CODICE
CR1654769

MODELLO
Q90SFTV/E400

SERIE
QUEEN 9

GENERAL CHARACTERISTICS

It is the choice of those who need maximum strength and power. Queen9 is distinguished by its 900 mm depth, a 20/10-thick work surface, double-crown burners, and the use of elegant stainless steel with a Scotch Brite finish.

Details that not only offer maximum functionality and aesthetics, but also take into account the practical and ergonomic needs of those who work.

The extreme freedom of composition allows top models to be combined with accessorizable oven and neutral base units, even with hygienic finishes.

With more than 350 models immediately available in the catalog, Queen9 is already ready to start giving its best.

In addition, all equipment that makes up a Queen9 kitchen is certified in compliance with international standards, including CE, GAR, AGA and others.



TECHNICAL SPECIFICATIONS

Stainless steel outer shells and feet.

Height of the work surface adjustable from 840 to 900 mm.

Baking plate 15 mm thick totally independent of the top.

Large floodable channel around the perimeter of the hotplate for collecting cooking residues, sloping towards the front for draining liquids into the large drawer.

Firing plates made with satin-finished surface and surface coated with soft iron, AISI430 steel, or polished hard chrome, all available in smooth, mixed, or ribbed versions.

Large grease collection drawer.

Module sizes: 40,60,80

In the 120-width modules, the cooking plate is lowered from the top by 40 mm sloping 10 mm toward the front of the machine.

Electric version: heating by means of armoured incoloy heating elements.

Cooking temperature thermostatically controlled and adjustable from 110 to 280°C. Safety thermostat.

Capacious grease collection drawer with capacity for the entire volume of the perimeter channel

Grooved plate design ensures cleanliness right to the end of the plate

Non-welded plate for fast maintenance and replacement in the utility

Plate not welded to the machine bed with optimisation of structural points under thermal stress

Thermal cutting that facilitates the user and adjacent machinery.

Uniform cooking temperature across the entire plate. Optimising heat in the cooking area and increasing operator comfort in the kitchen.

Water dispenser kit available as an accessory

FRY TOP S Electric M40 Iron Plate - Smooth - On thermostat compartment

Project
Rev.:
Zone:
Location:



CODICE
CR1654769

MODELLO
Q90SFTV/E400

SERIE
QUEEN 9

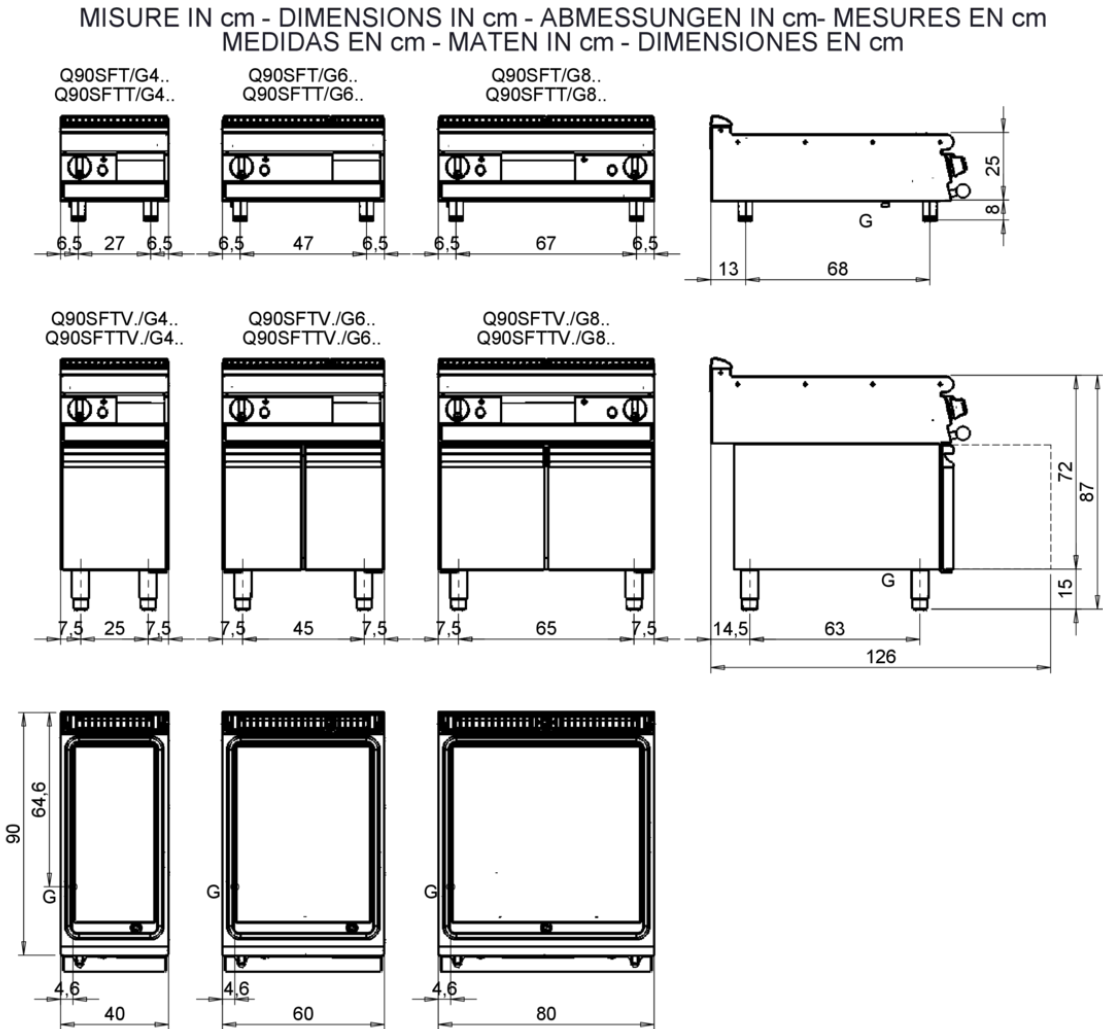
Technical Information

SPECIFICATION	DATA
MATERIAL	CR1654769
DEFINITION	Q90SFTV/E400 FTE LISCIO M40 A/G
COMMERCIAL LINE	QUEEN
SUPPLY	ELECTRICS
DIM. WIDTH	400 mm
DIM. PRODUCTIVITY	900 mm
DIM. HEIGHT	870 mm
NET WEIGHT	64 Kg
VOLUME (net)	0,313
PACKAGE LENGTH	440 mm
PACKAGE WIDTH	850 mm
PACKAGING HEIGHT	1160 mm
PACKAGE VOLUME	0,435 m3
GROSS PACKING WEIGHT	74 Kg
STANDARD POWER SUPPLY	380-415V 3N
FREQUENCY	50-60 Hz
ELECTRICAL POWER	5,000 kW
IP GRADE	IPX5
CERTIFIED MODEL	Q90SFTV/E400

FRY TOP S Electric M40 Iron Plate - Smooth - On thermostat compartment

CODICE CR1654769	MODELLO Q90SFTV/E400	SERIE QUEEN 9
---------------------	-------------------------	------------------

Project
Rev.:
Zone:
Location:



Legenda - Legende - Key - Légende - Leyenda - Legenda - Legenda	
E Pressacavo entrata linea elettrica - Stopfbuchse - Electric cable stress relief - Presse étoupe de câble él - Pisacable - Elektrische kabelwartel - Entrada cabo eléctrico	G Arrivo gas - Gasanschluss - Gas connection - Arrivée gaz - Union de gas - Gasaansluiting - Ligação gás EN 10226-1 R 1/2; EN ISO 228-1 G 1/2 (DK)
S Attacco scarico acqua - Wasserablauf - Water outlet - Vidange de l'eau - Desaguadero - Wateraftapaansluiting - Junção descarga água	H20 Arrivo acqua - Wasseranschluss - Water inlet - Arrivée eau - Union de água - Wateraansluiting - Junção alimentação água
S1 Scarico vasca - Wannenabflusrohr - Pan outlet - Vidange du bac - Descarga cuba - Water toevoer - Descarga da cuba	A1 = Calda - Heiss - Warm - Chaude - Caliente - Warm - Morno A2 = Fredda - Kalt - Cold - Froid - Fria - Koude - Frio
S2 Valvola di depressione - Anti-depression valve - Unterdruck ventil - Soupape de dépression - Válvula de depresi3n - Onderdrukklep - Válvula de depress3o	L Rubinetto di livello - Level tap - Wasserhahn - Robinet de niveau - Grifo de nivel - Niveaakraan - Torneira de nível
S3 Scarico acqua intercapedine - Wasserablauf Zwischenraum - Jacket water drain Evacuation eau double envelope - Descarga de água interst3cios - Afvoer water tussenruimte - Descarga de água na marmitta com Sistema de aquecimento indirecto	
S4 Scarico - Abflusrohr - Drain - Tuyau d'évacuation - Tubo de drenaje - Aftapbuis - Tubula33o de dreno	

FRY TOP S Electric M40 Iron Plate - Smooth - On thermostat compartment

Project
Rev.:
Zone:
Location:



CODICE
CR1654769

MODELLO
Q90SFTV/E400

SERIE
QUEEN 9

PRODUCT'S RANGE PLUS



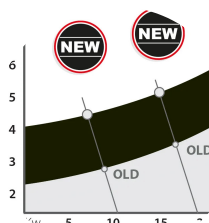
Thermal cutting that facilitates the user and adjacent machinery.



Water dispenser kit available as an accessory



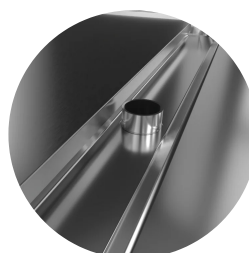
Grooved plate design ensures cleanliness right to the end of the plate



New version with identical useful cooking surface area and reduced energy output. An increase in output per cm2 that allows a reduction in consumption of up to 15% compared to conventional versions.



Non-welded plate to speed up maintenance and possible replacement in utilities.



Stainless steel overflow plug provided as standard for gutter flooding management.



Available as an accessory, the continuous discharge tube allows waste to be disposed of in an external receptacle.

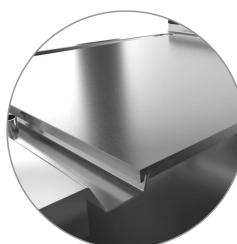


Plate not welded to the machine table with optimization of structural points subjected to thermal stress.

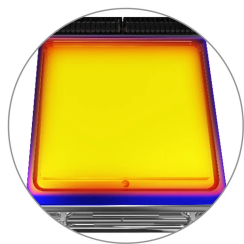
FRY TOP S Electric M40 Iron Plate - Smooth - On thermostat compartment

CODICE CR1654769	MODELLO Q90SFTV/E400	SERIE QUEEN 9
---------------------	-------------------------	------------------

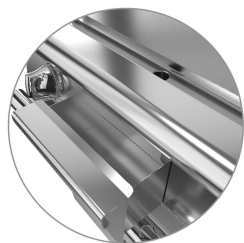
Project
Rev.:
Zone:
Location:



Floodable gutter for collecting cooking residue all around the perimeter of the plate easier cleaning, and better moisture retention of cooking food.



Uniform cooking temperature across the entire plate. Optimising heat in the cooking area and increasing operator comfort in the kitchen.



Capacious grease collection drawer with capacity of the entire volume of the perimeter channel.

FRY TOP S Electric M40 Iron Plate - Smooth - On thermostat compartment

Project
Rev.:
Zone:
Location:



CODICE
CR1654769

MODELLO
Q90SFTV/E400

SERIE
QUEEN 9

ACCESSORIES

CODE	MODELLO	DESCRIZIONE
CR1354989	PRPC	Smooth plate cleaning scraper - chrome-plated
CR1356399	RPR	Striped chrome plate scraper
CR0592089	NXFTC6/8	Fry top cleaning drawer M40-M60-M80-M120
CR1354999	PKLR	Replacement blades (10PCS)
CR1658669	9AFT4	Splash guard riser 90cm M40
CR1658609	97TFT	Plancha cleaning cap
CR1658839	Q794CAFT	WATER LOADING FOR FRY TOP M40 - 70 90 QUEEN - GAS OR ELECTRIC
CR1658919	Q94EKSCFT	CONTINUOUS DRAIN FOR FRY TOP M40 - 90 QUEEN - ELECTRIC
CR1658949	Q94ECASCFT	CONTINUOUS LOAD + SCAR.FOR FRY TOP M40 - 90 QUEEN - ELECTRIC
CR1659229	PAFT4	SUPER FRY TOP ACCESSORY HOLDER
CR1659259	AGMFT48	HOLDING GRID FOR FRY TOP
CR1659359	AKBFT-1	KIT 3 BOWLS GN1/9 H65 MM
CR1659369	AKBFT-2	KIT 2 BOWLS GN1/6 H65 MM
CR1659379	AKBFT-3	KIT 1 BASIN GN1/3 H65 MM