

EVO ELECTRIC 1-BASKET FRYER WITH ELECTRONIC CONTROL 22 LT - With oil filter system

Project
Rev.:
Zone:
Location:



CODICE
CR1209919T4W

MODELLO
QT90FREX/E422F-T4W

SERIE
BARON 4.0

GENERAL CHARACTERISTICS

From the solid foundation of Baron tradition, comes the new Queen 4.0 kitchen, even more practical, more accessorized, more technological.

An evolution in the field of professional kitchens.

Queen 4.0 is perfectly designed in detail to speed up and simplify every task of preparation, cooking, tidying up, and cleaning in the kitchen, and stand by you every day as a true ally in your work.



TECHNICAL SPECIFICATIONS

Worktop, cooking tank and dashboard
made of AISI 304 stainless steel.

Molded firing pan with radiused inner profile.

Equipped with a large front reservoir for oil and foam expansion.

Large cold zone at the bottom ensures longer integrity of the oil used.

Manual reset safety thermostat.

Removable filter, baskets, lid and manifold for drain tap included.

Height-adjustable stainless steel feet.

IPX5 degree of protection.

Gas version

Stainless steel burner outside the tank.

Oil temperature is regulated by
thermostat.

Electric version

Armored heating element made of AISI 304 stainless steel, inside the pots
rotatable by more than 90°.

Oil circulation and filtration

Automatic choice from a selection of pre-set and tested recipes that can be stored by the user.

Data collection, operation monitoring, remote control are just some of the possibilities that connectivity puts at your disposal.

Equipment certified for low voltage directive 2014/35/EU according to the international CB scheme.

Thanks to the jet-proofing certification (IPX5) obtained through specific tests, knobs and under-knobs can be washed at the end of the working day without compromising functionality and safety.

The front bar is a comfortable foothold for the cook; it keeps a safe distance from the worktop and thus protects against accidental collisions with what is resting on the worktops and at the same time the handles.

EVO ELECTRIC 1-BASKET FRYER WITH ELECTRONIC CONTROL 22 LT - With oil filter system

Project
Rev.:
Zone:
Location:



| | | |
|--------------|--------------------|-----------|
| CODICE | MODELLO | SERIE |
| CR1209919T4W | QT90FREV/E422F-T4W | BARON 4.0 |

Technical Information

| SPECIFICATION | DATA |
|-----------------------|--|
| MATERIAL | CR1209919T4W |
| DEFINITION | Q90FREV/E422F-T4W FRIGG. ELE IOT 900 M40 |
| COMMERCIAL LINE | QUEEN |
| SUPPLY | ELECTRICS |
| DIM. WIDTH | 400 mm |
| DIM. PRODUCTIVITY | 900 mm |
| DIM. HEIGHT | 870 mm |
| NET WEIGHT | 0 Kg |
| VOLUME (net) | 0.313 |
| PACKAGE LENGTH | 840 mm |
| PACKAGE WIDTH | 1020 mm |
| PACKAGING HEIGHT | 1040 mm |
| PACKAGE VOLUME | 0,891 m3 |
| GROSS PACKING WEIGHT | 0 Kg |
| STANDARD POWER SUPPLY | 380-415V 3N |
| FREQUENCY | 50-60 Hz |
| ELECTRICAL POWER | 22 kW |
| IP GRADE | IPX5 |
| CERTIFIED MODEL | Q90FREV/E422F |

EVO ELECTRIC 1-BASKET FRYER WITH ELECTRONIC CONTROL 22 LT - With oil filter system

Project
Rev.:
Zone:
Location:

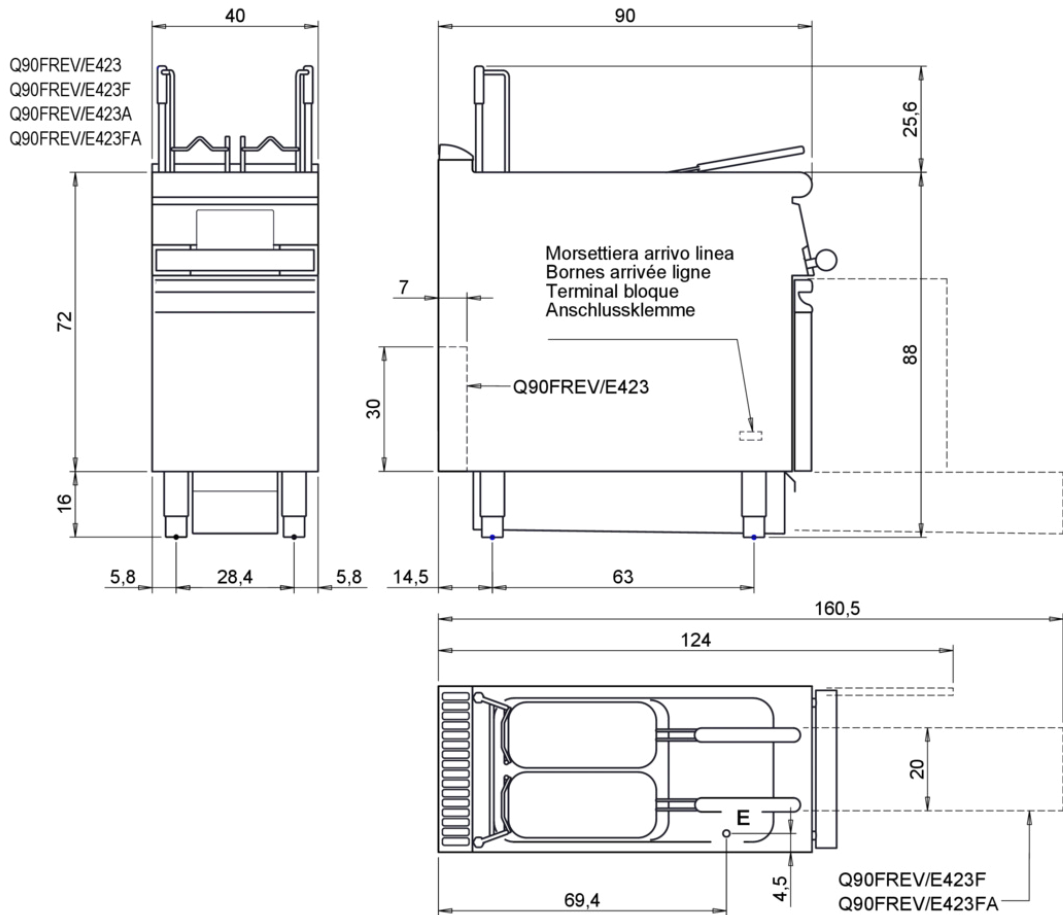


CODICE
CR1209919T4W

MODELLO
QT90FREVE/E422F-T4W

SERIE
BARON 4.0

MISURE IN cm - DIMENSIONS IN cm - ABMESSUNGEN IN cm- MESURES EN cm
MEDIDAS EN cm - MATEN IN cm - DIMENSIONES EN cm



| Legenda - Legende - Key - Légende - Leyenda - Legenda - Legenda | | | |
|---|---|------|---|
| E | Pressacavo entrata linea elettrica - Stopfbuchse - Electric cable stress relief - Presse étoupe de câble él - Pisacable - Elektrische kabelwartel - Entrada cabo eléctrico | G | Arrivo gas - Gasanschluss - Gas connection - Arrivée gaz - Union de gas - Gasaansluiting - Ligação gás |
| S | Attacco scarico acqua - Wasserablauf - Water outlet - Vidange de l'eau - Desaguadero - Wateraftapaansluiting - Junção descarga água | H20 | Arrivo acqua - Wasseranschluss - Water inlet - Arrivée eau - Union de água - Wateraansluiting - Junção alimentação água |
| S1 | Scarico vasca - Wannenabflussrohr - Pan outlet - Vidange du bac - Descarga cuba - Water toevoer - Descarga da cuba | A1 = | Calda - Heiss - Warm - Chaude - Caliente - Warm - Morno |
| S2 | Valvola di depressione - Anti-depression valve - Unterdruck ventil - Soupape de dépression - Válvula de depresión - Onderdrukkelep - Válvula de depressão | A2 = | Fredda - Kalt - Cold - Froid - Fria - Koude - Frio |
| S3 | Scarico acqua intercapedine - Wasserablauf Zwischenraum - Jacket water drain Evacuation eau double envelope - Descarga de água interstícios - Afvoer water tussenruimte - Descarga de água na marmitta com Sistema de aquecimento indirecto | L | Rubinetto di livello - Level tap - Wasserhahn - Robinet de niveau - Grifo de nivel - Niveaakraan - Torneira de nivel |
| S4 | Scarico - Abflussrohr - Drain - Tuyau d'évacuation - Tubo de drenaje - Aftapbuis - Tubulação de dreno | | |

EVO ELECTRIC 1-BASKET FRYER WITH ELECTRONIC CONTROL 22 LT - With oil filter system

Project
Rev.:
Zone:
Location:



CODICE
CR1209919T4W

MODELLO
QT90FREX/E422F-T4W

SERIE
BARON 4.0

PRODUCT'S RANGE PLUS



Automated basket lift. By programming recipes from the touch screen panel, the basket lifts automatically at the end of the set time.



Automatic choice from a selection of pre-set and tested recipes that can be stored by the user.



Industry 4.0 connectivity-ready version. Model T4w



Control panel with 7-inch high-resolution touch screen display, simple and intuitive.



In the electric version with a 22-liter tank, the heating element can be rotated more than 90°.

Oil circulation and filtration



EVO ELECTRIC 1-BASKET FRYER WITH ELECTRONIC CONTROL 22 LT - With oil filter system

Project
Rev.:
Zone:
Location:



CODICE
CR1209919T4W

MODELLO
QT90FREV/E422F-T4W

SERIE
BARON 4.0

ACCESSORIES

| CODE | MODELLO | DESCRIZIONE |
|-----------|-------------|--|
| CR1357499 | 4.0IOTPRO | PRO Subscription - Cloud |
| CR1357479 | 4.0IOTENTRY | ENTRY Subscription - Cloud |
| CR1353969 | QCF22/23P | STAINLESS STEEL BASKET FOR FRYERS 22/23P LT |
| CR1353979 | QCF22/23 | 22/23 L STAINLESS STEEL BASKET FOR FRYERS |
| CR1015399 | Q9KRS23HF | Tank filling and emptying kit for versions with automatic filtration |