

NEUTRAL ELEMENT WITH DRAWER L800 ON OPEN COMPARTMENT

Project
Rev.:
Zone:
Location:



CODICE
CR1015169

MODELLO
Q70NECV/810

SERIE
QUEEN 7

GENERAL CHARACTERISTICS

For those who do not want to give up the quality and solidity of a Queen stove, the Series 7 offers a 700 mm depth and more compact dimensions to fit any room, burners available in various configurations and wattages, enhanced by the refined Scotch Brite finish.

Thanks to its extreme compositional freedom, every composition is possible: you can combine Model i tops with accessorizable oven and neutral bases and hygienic finishes; create customized solutions by matching and attaching equipment back to back, sideways "flush" perfectly sealed, or "bridge" structures, offering high-level solutions that always perfectly meet the chef's needs.

As a total guarantee, all equipment that make up a Queen7 kitchen are certified in compliance with international standards, including CE, GAR, AGA and others.



TECHNICAL SPECIFICATIONS

Stainless steel compartment Accessory with doors, drawers and heating kit.

Anti-tip guides for gastronorm containers.

Hinged door with athermic handle and magnetic lock, available with right or left opening.

Drawer mounted on stainless steel telescopic slides running on ball bearings.

Load capacity for each drawer kg 60.

Drawers for GN 1/1

Modular, easy to combine and robust.

Thanks to the jet-proofing certification obtained through specific tests, knobs and under-knobs can be washed at the end of the working day without compromising functionality and safety.

The front bar is a comfortable foothold for the cook; it keeps a safe distance from the worktop and thus protects against accidental collisions with what is resting on the worktops and at the same time the handles.

NEUTRAL ELEMENT WITH DRAWER L800 ON OPEN COMPARTMENT

Project
Rev.:
Zone:
Location:



CODICE
CR1015169

MODELLO
Q70NECV/810

SERIE
QUEEN 7

Technical Information

SPECIFICATION	DATA
MATERIAL	CR1015169
DEFINITION	Q70NECV/810 EL. NEUT. A/G M80 C/CAS
COMMERCIAL LINE	QUEEN
DIM. WIDTH	800 mm
DIM. PRODUCTIVITY	700 mm
DIM. HEIGHT	870 mm
NET WEIGHT	51 Kg
VOLUME (net)	0.487
PACKAGE LENGTH	850 mm
PACKAGE WIDTH	850 mm
PACKAGING HEIGHT	1150 mm
PACKAGE VOLUME	0,831 m3
GROSS PACKING WEIGHT	61.4 Kg

NEUTRAL ELEMENT WITH DRAWER L800 ON OPEN
COMPARTMENT

Project
Rev.:
Zone:
Location:



CODICE
CR1015169

MODELLO
Q70NECV/810

SERIE
QUEEN 7

NEUTRAL ELEMENT WITH DRAWER L800 ON OPEN COMPARTMENT

Project
Rev.:
Zone:
Location:



CODICE
CR1015169

MODELLO
Q70NECV/810

SERIE
QUEEN 7

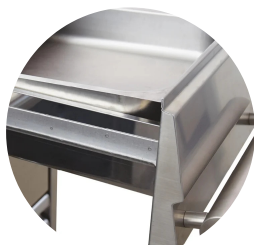
PRODUCT'S RANGE PLUS



Modular, easy to combine and robust.



Drawer with ergonomic handle



Drawers capacity GN 1/1 bowls

NEUTRAL ELEMENT WITH DRAWER L800 ON OPEN
COMPARTMENT

CODICE	MODELLO	SERIE
CR1015169	Q70NECV/810	QUEEN 7

Project
Rev.:
Zone:
Location:



ACCESSORIES

CODE	MODELLO	DESCRIZIONE
VB700	VB700	BOTTLE COMPARTMENT FOR MODULE 200