

NEUTRAL BASE COMPARTMENT M20

Project
Rev.:
Zone:
Location:



CODICE
CR1354839

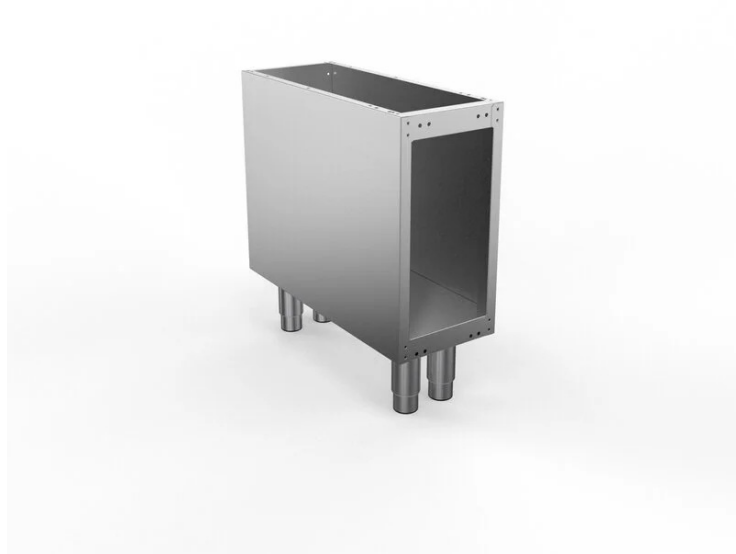
MODELLO
Q70VA20

SERIE
QUEEN 7

GENERAL CHARACTERISTICS

For those who do not want to give up the quality and solidity of a Queen stove, the Series 7 offers a 700 mm depth and more compact dimensions to fit any room, burners available in various configurations and wattages, enhanced by the refined Scotch Brite finish.

Thanks to its extreme compositional freedom, every composition is possible: you can combine Model i tops with accessorizable oven and neutral bases and hygienic finishes; create customized solutions by matching and attaching equipment back to back, sideways "flush" perfectly sealed, or "bridge" structures, offering high-level solutions that always perfectly meet the chef's needs. As a total guarantee, all equipment that make up a Queen7 kitchen are certified in compliance with international standards, including CE, GAR, AGA and others.



TECHNICAL SPECIFICATIONS

NEUTRAL BASE COMPARTMENT M20

Project
Rev.:
Zone:
Location:



CODICE
CR1354839

MODELLO
Q70VA20

SERIE
QUEEN 7

Technical Information

| SPECIFICATION | DATA |
|----------------------|---------------------------------|
| MATERIAL | CR1354839 |
| DEFINITION | Q70VA20 BASE VANO M20 S/PORTINE |
| COMMERCIAL LINE | QUEEN |
| DIM. WIDTH | 200 mm |
| DIM. PRODUCTIVITY | 700 mm |
| DIM. HEIGHT | 650 mm |
| NET WEIGHT | 7 Kg |
| VOLUME (net) | 0.091 |
| PACKAGE LENGTH | 420 mm |
| PACKAGE WIDTH | 680 mm |
| PACKAGING HEIGHT | 650 mm |
| PACKAGE VOLUME | 0,100 m3 |
| GROSS PACKING WEIGHT | 7.8 Kg |
| CERTIFIED MODEL | Q70VA20 |

NEUTRAL BASE COMPARTMENT M20

Project
Rev.:
Zone:
Location:

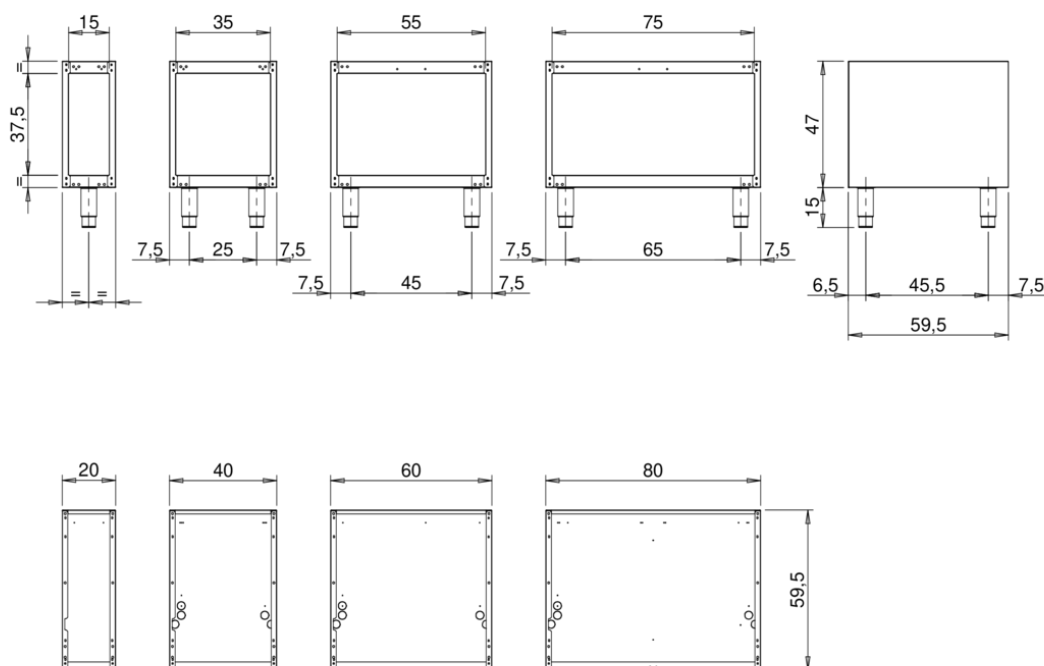


CODICE
CR1354839

MODELLO
Q70VA20

SERIE
QUEEN 7

MISURE IN cm - DIMENSIONS IN cm - ABMESSUNGEN IN cm- MESURES EN cm
MEDIDAS EN cm - MATEN IN cm - DIMENSIONES EN cm



| Legenda - Legende - Key - Légende - Leyenda - Legenda - Legenda | |
|---|---|
| E Pressacavo entrata linea elettrica - Stopfbuchse - Electric cable stress relief - Presse étoupe de câble él - Pisacable - Elektrische kabelwartel - Entrada cabo eléctrico | G Arrivo gas - Gasanschluss - Gas connection - Arrivée gaz - Union de gas - Gasaansluiting - Ligação gás |
| S Attacco scarico acqua - Wasserablauf - Water outlet - Vidange de l'eau - Desaguadero - Wateraftapaansluiting - Junção descarga água | H20 Arrivo acqua - Wasseranschluss - Water inlet - Arrivée eau - Union de água - Wateraansluiting - Junção alimentação água |
| S1 Scarico vasca - Wannenabflusrohr - Pan outlet - Vidange du bac - Descarga cuba - Water toevoer - Descarga da cuba | A1 = Calda - Heiss - Warm - Chaude - Caliente - Warm - Morno A2 = Fredda - Kalt - Cold - Froid - Fria - Koude - Frio |
| S2 Valvola di depressione - Anti-depression valve - Unterdruck ventil - Soupape de dépression - Válvula de depresión - Onderdrukklep - Válvula de depressão | L Rubinetto di livello - Level tap - Wasserhahn - Robinet de niveau - Grifo de nível - Niveaakraan - Torneira de nível |
| S3 Scarico acqua intercapedine - Wasserablauf Zwischenraum - Jacket water drain Evacuation eau double envelope - Descarga de agua intersticios - Afvoer water tussenruimte - Descarga de água na marmitta com Sistema de aquecimento indirecto | |
| S4 Scarico - Abflusrohr - Drain - Tuyau d'évacuation - Tubo de drenaje - Aftapbuis - Tubulação de dreno | |