

NEUTRAL ELEMENT WITH DRAWER L400 TOP VERSION

Project
Rev.:
Zone:
Location:



CODICE
CR1018689

MODELLO
Q90NEC/410

SERIE
QUEEN 9

GENERAL CHARACTERISTICS

It is the choice of those who need maximum strength and power. Queen9 is distinguished by its 900 mm depth, a 20/10-thick work surface, double-crown burners, and the use of elegant stainless steel with a Scotch Brite finish.

Details that not only offer maximum functionality and aesthetics, but also take into account the practical and ergonomic needs of those who work.

The extreme freedom of composition allows top models to be combined with accessorizable oven and neutral base units, even with hygienic finishes.

With more than 350 models immediately available in the catalog, Queen9 is already ready to start giving its best.

In addition, all equipment that makes up a Queen9 kitchen is certified in compliance with international standards, including CE, GAR, AGA and others.



TECHNICAL SPECIFICATIONS

Stainless steel compartment can be accessorized with doors, drawers and heating kit.

Anti-tip guides for gastronorm containers.

Hinged door with athermic handle and magnetic lock, available with right or left opening.

Drawer mounted on stainless steel telescopic slides running on ball bearings.

Load capacity for each drawer kg 60.

Drawer with ergonomic handle

Drawers for GN 1/1

Thanks to the jet-proofing certification (IPX5) obtained through specific tests, knobs and under-knobs can be washed at the end of the working day without compromising functionality and safety.

The front bar is a comfortable foothold for the cook; it keeps a safe distance from the worktop and thus protects against accidental collisions with what is resting on the worktops and at the same time the handles.

NEUTRAL ELEMENT WITH DRAWER L400 TOP VERSION

Project
Rev.:
Zone:
Location:



CODICE
CR1018689

MODELLO
Q90NEC/410

SERIE
QUEEN 9

Technical Information

SPECIFICATION	DATA
MATERIAL	CR1018689
DEFINITION	Q90NEC/410 EL. NEUT. TOP M40 C/CAS
COMMERCIAL LINE	QUEEN
DIM. WIDTH	400 mm
DIM. PRODUCTIVITY	900 mm
DIM. HEIGHT	250 mm
NET WEIGHT	21 Kg
VOLUME (net)	0.09
PACKAGE LENGTH	440 mm
PACKAGE WIDTH	950 mm
PACKAGING HEIGHT	520 mm
PACKAGE VOLUME	0,217 m3
GROSS PACKING WEIGHT	31.6 Kg

NEUTRAL ELEMENT WITH DRAWER L400 TOP
VERSION

CODICE	MODELLO	SERIE
CR1018689	Q90NEC/410	QUEEN 9

Project
Rev.:
Zone:
Location:



NEUTRAL ELEMENT WITH DRAWER L400 TOP VERSION

Project
Rev.:
Zone:
Location:



CODICE
CR1018689

MODELLO
Q90NEC/410

SERIE
QUEEN 9

PRODUCT'S RANGE PLUS



Thanks to the jet-proofing certification (IPX5) obtained through specific tests, knobs and under-knobs can be washed at the end of the working day without compromising functionality and safety.



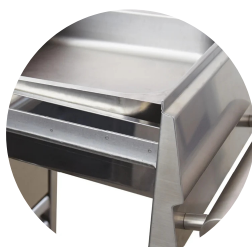
Thanks to the jet-proofing certification (IPX5) obtained through specific tests, knobs and under-knobs can be washed at the end of the working day without compromising functionality and safety.



The front bar is a comfortable foothold for the cook; it keeps a safe distance from the worktop and thus protects against accidental collisions with what is resting on the worktops and at the same time the handles.



Drawers for GN 1/1



Thanks to the jet-proofing certification (IPX5) obtained through specific tests, knobs and under-knobs can be washed at the end of the working day without compromising functionality and safety.

NEUTRAL ELEMENT WITH DRAWER L400 TOP
VERSION

CODICE CR1018689	MODELLO Q90NEC/410	SERIE QUEEN 9
---------------------	-----------------------	------------------

Project
Rev.:
Zone:
Location:



ACCESSORIES

CODE	MODELLO	DESCRIZIONE
CR1018869	Q90VB	BOTTLE COMPARTMENT FOR MODULE 200