

80lt MANUAL ELECTRIC TILTING BRATT PAN - IRON TANK

Project
Rev.:
Zone:
Location:



CODICE
CR1018139T4W

MODELLO
QT90BR/E81-T4W

SERIE
BARON 4.0

GENERAL CHARACTERISTICS

From the solid foundation of Baron tradition, comes the new Queen 4.0 kitchen, even more practical, more accessorized, more technological.

An evolution in the field of professional kitchens.

Queen 4.0 is perfectly designed in detail to speed up and simplify every task of preparation, cooking, tidying up, and cleaning in the kitchen, and stand by you every day as a true ally in your work.



TECHNICAL SPECIFICATIONS

Stainless steel outer shells and feet.

Height of the work surface adjustable from 840 to 900 mm.

Tops with a thickness of 2 mm.

Available with iron, and stainless steel tanks.

Robust, double-walled, self-balancing lids made of stainless steel to reduce heat loss.

Water loading via solenoid valve.

Cooking temperature controlled by thermostat with adjustment from 100 to 280°C.

Heating via armoured incoloy heating elements.

Large-radius tilting tank.

Equipment certified for low voltage directive 2014/35/EU according to the international CB scheme.

Thanks to the jet-proofing certification (IPX5) obtained through specific tests, knobs and under-knobs can be washed at the end of the working day without compromising functionality and safety.

The front bar is a comfortable foothold for the cook; it keeps a safe distance from the worktop and thus protects against accidental collisions with what is resting on the worktops and at the same time the handles.

80lt MANUAL ELECTRIC TILTING BRATT PAN - IRON TANK

Project
Rev.:
Zone:
Location:



CODICE
CR1018139T4W

MODELLO
QT90BR/E81-T4W

SERIE
BARON 4.0

Technical Information

| SPECIFICATION | DATA |
|-----------------------|--|
| MATERIAL | CR1018139T4W |
| DEFINITION | QT90BR/E81-T4W BRASIERA EL.M80 VASCA FERRO |
| COMMERCIAL LINE | QUEEN |
| SUPPLY | ELECTRICS |
| DIM. WIDTH | 800 mm |
| DIM. PRODUCTIVITY | 900 mm |
| DIM. HEIGHT | 870 mm |
| NET WEIGHT | 139.8 Kg |
| VOLUME (net) | 0.626 |
| PACKAGE LENGTH | 860 mm |
| PACKAGE WIDTH | 1020 mm |
| PACKAGING HEIGHT | 1150 mm |
| PACKAGE VOLUME | 1,010 m3 |
| GROSS PACKING WEIGHT | 155 Kg |
| STANDARD POWER SUPPLY | 380-415V 3N |
| FREQUENCY | 50-60 Hz |
| ELECTRICAL POWER | 9 kW |
| IP GRADE | IPX5 |
| CAPACITY | 80 |
| CERTIFIED MODEL | Q90BR/E81 |

80lt MANUAL ELECTRIC TILTING BRATT PAN - IRON TANK

Project
Rev.:
Zone:
Location:



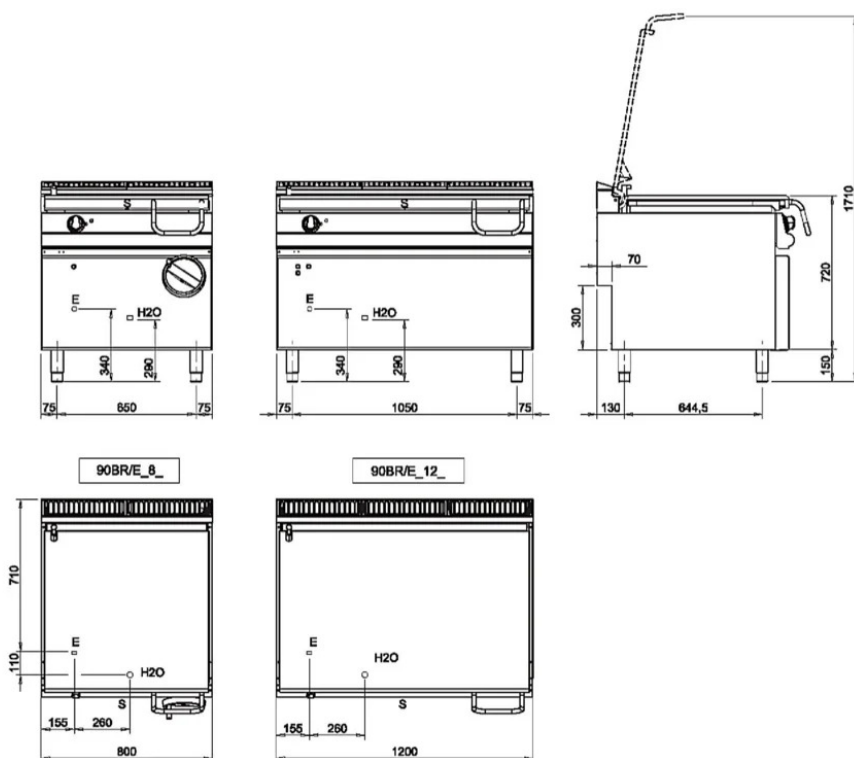
CODICE
CR1018139T4W

MODELLO
QT90BR/E81-T4W

SERIE
BARON 4.0

SCHEMA DI INSTALLAZIONE - INSTALLATION DIAGRAM - INSTALLATIONSPLAN - SCHÉMA D'INSTALLATION - ESQUEMA DE INSTALACION - INSTALLATIESCHEMA - INSTALLATIONSRIJNINGAR

MISURE IN mm - DIMENSIONS IN mm - ABMESSUNGEN IN mm
MESURES EN mm - MEDIDAS EN mm - MATEN IN mm



Legenda - Legende - Key - Légende - Leyenda - Legenda

- E** Pressacavo entrata linea elettrica - Stopfbuchse - Electric cable stress relief
Presse étoupe de cable él. - Pisacable - Elektrische kabelwartel
- H2O** Attacco arrivo acqua - Wasseranschluss - Water inlet
Arrivée eau - Union de agua - Wateraansluiting
EN ISO 228-1 G 3/4
- S** Scarico vasca - Wannenabflussrohr - Pan outlet
Vidange du bac - Descarga cuba - Water toevoer

80lt MANUAL ELECTRIC TILTING BRATT PAN - IRON TANK

Project
Rev.:
Zone:
Location:



CODICE
CR1018139T4W

MODELLO
QT90BR/E81-T4W

SERIE
BARON 4.0

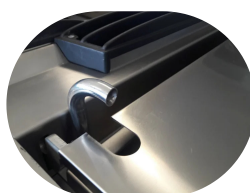
PRODUCT'S RANGE PLUS



Possibility of setting 2 timers to control cooking. An acoustic signal warns the operator at the end of the set time.



Predisposition for core probe, for even greater cooking control. Reaching the set core temperature is signalled by an acoustic signal.



Water filling via solenoid valve and fixed tap at the top.



Hotplate temperature control via touch screen and adjustment with ergonomic knob

Industry 4.0 ready version.



Self-balancing lids.



Large-radius tilting tank.



80lt MANUAL ELECTRIC TILTING BRATT PAN - IRON
TANK

| | | |
|--------------|----------------|-----------|
| CODICE | MODELLO | SERIE |
| CR1018139T4W | QT90BR/E81-T4W | BARON 4.0 |

Project
Rev.:
Zone:
Location:



ACCESSORIES

| CODE | MODELLO | DESCRIZIONE |
|-----------|-------------|----------------------------|
| CR1357499 | 4.0IOTPRO | PRO Subscription - Cloud |
| CR1357479 | 4.0IOTENTRY | ENTRY Subscription - Cloud |