

# FRY TOP S GAS M80 Stainless Steel Plate - Smooth - Top Thermostat Version

Project .....  
Rev.: .....  
Zone: .....  
Location: .....



CODICE  
CR1653999

MODELLO  
Q90SFTT/G800

SERIE  
QUEEN 9

## GENERAL CHARACTERISTICS

It is the choice of those who need maximum strength and power. Queen9 is distinguished by its 900 mm depth, a 20/10-thick work surface, double-crown burners, and the use of elegant stainless steel with a Scotch Brite finish.

Details that not only offer maximum functionality and aesthetics, but also take into account the practical and ergonomic needs of those who work.

The extreme freedom of composition allows top models to be combined with accessorizable oven and neutral base units, even with hygienic finishes.

With more than 350 models immediately available in the catalog, Queen9 is already ready to start giving its best.

In addition, all equipment that makes up a Queen9 kitchen is certified in compliance with international standards, including CE, GAR, AGA and others.



## TECHNICAL SPECIFICATIONS

Stainless steel outer shells and feet.

Height of the work surface adjustable from 840 to 900 mm.

Tops with a thickness of 2 mm.

Baking plate 15 mm thick totally independent of the top.

Large floodable channel around the perimeter of the hotplate for collecting cooking residues, sloping towards the front for draining liquids into the large drawer.

Firing plates made with satin-finished surface and surface coated with soft iron, AISI430 steel, or polished hard chrome, all available in smooth, mixed, or ribbed versions.

Large grease collection drawer.

Module sizes: 40,60,80

In the 120-width modules, the cooking plate is lowered from the top by 40 mm sloping 10 mm toward the front of the machine.

Gas version: tubular burner with self-stabilized flame with great uniformity of heat distribution.

Temperature regulation by modulating tap (temperature above 300°C) or thermostatic safety valve with thermocouple (90-280°C).

Large fat collection drawer with capacity of the entire volume of the perimeter channel

Grooved plate design ensures cleanliness right to the end of the plate

Plate not welded to the machine bed with optimisation of structural points under thermal stress

Plate not welded to the machine bed with optimisation of structural points under thermal stress

Thermal cutting that facilitates the user and adjacent machinery.

Uniform cooking temperature across the entire plate. Optimising heat in the cooking area and increasing operator comfort in the kitchen.

Water dispenser kit available as an accessory

# FRY TOP S GAS M80 Stainless Steel Plate - Smooth - Top Thermostat Version

Project .....  
Rev.: .....  
Zone: .....  
Location: .....



CODICE  
CR1653999

MODELLO  
Q90SFTT/G800

SERIE  
QUEEN 9

## Technical Information

SPECIFICATION	DATA
MATERIAL	CR1653999
DEFINITION	Q90SFTT/G800 FTG LISCIO M80 TERM. TOP
COMMERCIAL LINE	QUEEN
SUPPLY	GAS
DIM. WIDTH	800 mm
DIM. PRODUCTIVITY	900 mm
DIM. HEIGHT	250 mm
NET WEIGHT	110 Kg
VOLUME (net)	0.18
PACKAGE LENGTH	450 mm
PACKAGE WIDTH	850 mm
PACKAGING HEIGHT	570 mm
PACKAGE VOLUME	0,218 m3
GROSS PACKING WEIGHT	118 Kg
GAS POWER	20
GAS POWER (G25.3/25mbar)	20,00
CERTIFIED MODEL	90SFTT/G8

FRY TOP S GAS M80 Stainless Steel Plate - Smooth -  
Top Thermostat Version

Project .....  
Rev.: .....  
Zone: .....  
Location: .....



CODICE  
CR1653999

MODELLO  
Q90SFTT/G800

SERIE  
QUEEN 9



Legenda - Legende - Key - Légende - Leyenda - Legenda - Legenda	
<b>E</b> Pressacavo entrata linea elettrica - Stopfbuchse - Electric cable stress relief - Presse étoupe de câble él - Pisacable - Elektrische kabelwartel - Entrada cabo eléctrico	<b>G</b> Arrivo gas - Gasanschluss - Gas connection - Arrivée gaz - Union de gas - Gasaansluiting - Ligação gás <b>EN 10226-1 R 1/2; EN ISO 228-1 G 1/2 (DK)</b>
<b>S</b> Attacco scarico acqua - Wasserablauf - Water outlet - Vidange de l'eau - Desaguadero - Wateraftapaansluiting - Junção descarga água	<b>H20</b> Arrivo acqua - Wasseranschluss - Water inlet - Arrivée eau - Union de agua - Wateraansluiting - Junção alimentação água
<b>S1</b> Scarico vasca - Wannenabflussrohr - Pan outlet - Vidange du bac - Descarga cuba - Water toevoer - Descarga da cuba	<b>A1</b> = Calda - Heiss - Warm - Chaude - Caliente - Warm - Morno <b>A2</b> = Fredda - Kalt - Cold - Froid - Fria - Koude - Frio
<b>S2</b> Valvola di depressione - Anti-depression valve - Unterdruck ventil - Soupape de dépression - Válvula de depresión - Onderdrukkelep - Válvula de depressão	<b>L</b> Rubinetto di livello - Level tap - Wasserhahn - Robinet de niveau - Grifo de nivel - Niveaakraan - Torneira de nível
<b>S3</b> Scarico acqua intercapedine - Wasserablauf Zwischenraum - Jacket water drain Evacuation eau double envelope - Descarga de agua intersticios - Afvoer water tussenruimte - Descarga de água na marmitta com Sistema de aquecimento indirecto	
<b>S4</b> Scarico - Abflussrohr - Drain - Tuyau d'évacuation - Tubo de drenaje - Aftapbuis - Tubulação de dreno	

# FRY TOP S GAS M80 Stainless Steel Plate - Smooth - Top Thermostat Version

Project .....  
Rev.: .....  
Zone: .....  
Location: .....



CODICE  
CR1653999

MODELLO  
Q90SFTT/G800

SERIE  
QUEEN 9

## PRODUCT'S RANGE PLUS



Grooved plate design ensures cleanliness right to the end of the plate



Non-welded plate to speed up maintenance and possible replacement in utilities.



Available as an accessory, the continuous discharge tube allows waste to be disposed of in an external receptacle.



Thermal cutting that facilitates the user and adjacent machinery.



Water dispenser kit available as an accessory



New version with identical useful cooking surface area and reduced energy output. An increase in output per cm<sup>2</sup> that allows a reduction in consumption of up to 15% compared to conventional versions.



Water dispenser kit available as an accessory



Stainless steel overflow plug provided as standard for gutter flooding management.

# FRY TOP S GAS M80 Stainless Steel Plate - Smooth - Top Thermostat Version

Project .....  
Rev.: .....  
Zone: .....  
Location: .....



CODICE  
CR1653999

MODELLO  
Q90SFTT/G800

SERIE  
QUEEN 9

## PRODUCT'S RANGE PLUS



Grooved plate design ensures  
cleanliness right to the end of the  
plate

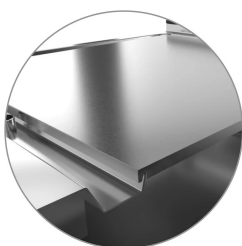
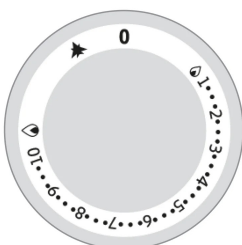


Plate not welded to the machine  
table with optimization of structural  
points subjected to thermal stress.



Floodable gutter for collecting  
cooking residue all around the  
perimeter of the plate easier  
cleaning, and better moisture  
retention of cooking food.



In thermostat versions, the  
temperature of the hotplate can be  
adjusted from 90 to 280 °C to  
optimize consumption and adapt to  
the most delicate cooking.

# FRY TOP S GAS M80 Stainless Steel Plate - Smooth - Top Thermostat Version

Project .....  
Rev.: .....  
Zone: .....  
Location: .....



CODICE  
CR1653999

MODELLO  
Q90SFTT/G800

SERIE  
QUEEN 9

## ACCESSORIES

CODE	MODELLO	DESCRIZIONE
CR1354989	PRPC	Smooth plate cleaning scraper - chrome-plated
CR1356399	RPR	Striped chrome plate scraper
CR0592089	NXFTC6/8	Fry top cleaning drawer M40-M60-M80-M120
CR1354999	PKLR	Replacement blades (10PCS)
CR1658689	9AFT8	M80 splash guard
CR1658609	97TFT	Plancha cleaning cap
CR1658849	Q7968CAF	WATER LOADING FOR FRY TOP M60 M80 - 70 90 QUEEN - GAS OR ELECTRIC
CR1659179	Q98GKSCFT	CONTINUOUS EXHAUST FOR FRY TOP M80 - 90 QUEEN - GAS
CR1659209	Q98GCASCFT	LOAD + CONTINUOUS SCAR.FOR FRY TOP M80 - 90 QUEEN - GAS
CR1659249	PAFT8	M80 SUPER FRY TOP ACCESSORY HOLDER
CR1659259	AGMFT48	HOLDING GRID FOR FRY TOP
CR1659269	AGMFT6	HOLDING GRID FOR FRY TOP
CR1659359	AKBFT-1	KIT 3 BOWLS GN1/9 H65 MM
CR1659369	AKBFT-2	KIT 2 BOWLS GN1/6 H65 MM
CR1659379	AKBFT-3	KIT 1 BASIN GN1/3 H65 MM