

## ROLL-IN STORAGE CABINET 1 DOOR - TEMP. -15/-20 °C

Project .....  
Rev.: .....  
Zone: .....  
Location: .....



CODICE  
**BRI70BT**

MODELLO  
**RI70BT**

SERIE  
**REFRIGERATED  
CABINETS**

### GENERAL CHARACTERISTICS

One-piece construction with AISI304 stainless steel interior and exterior finish.

Insulation thickness 85 mm high density.

Dashboard openable for easy periodic maintenance (condenser cleaning).

External back and sternum base in pre-painted steel.

Magnetic gasket on all four sides and counter-magnet on the gasket rebates.

Ergonomic full-height handle recessed into the front of the door for easy opening in any type of installation.

Inner compartment with 26-position moulded sides, 3 Rilsan GN2/1 grids included.

Foamed engine compartment sides for better soundproofing and greater strength.

Hot gas defrosting and defrost water disposal system without energy consumption.

Indirect ventilation thanks to the full-height ducting system for optimal air circulation and uniform temperature distribution.

Environmentally friendly refrigerant R290



## ROLL-IN STORAGE CABINET 1 DOOR - TEMP. -15/-20 °C

Project .....  
Rev.: .....  
Zone: .....  
Location: .....



CODICE  
**BRI70BT**

MODELLO  
**RI70BT**

SERIE  
**REFRIGERATED  
CABINETS**

### TECHNICAL SPECIFICATIONS

Monocoque construction in AISI304 Scotch-Brite satin stainless steel  
Insulation in CFC and HCFC-free PU, thickness 80 mm (70mm version COMPACT)

Automatic defrosting and evaporation of condensed water  
Full-height ergonomic handles and magnetic seals on 3 sides  
Internal bumper on all sides

Panel construction.

Capacity of the wheeled containers: GN 2/1 or EN 400x600 mm or 600x800 mm.

Finely SCOTCH-BRITE satined exterior PU, CFC and HCFC free insulation,

thickness 80 mm.

Automatic defrost and condensate evaporation device without the need for any electricity.

Large capacity makes it possible to insert trolleys up to overall dimensions: 700x900x1860 mm.

Ergonomic full height handles and magnetic seals on 4 sides.

Self-closing doors with 100° opening lock.

Insulated floor in AISI 304 18/10 steel for the BT version.

Bumpers on the back and inside of the door in stainless steel.

Refrigerated versions (built-in condensing unit).

# ROLL-IN STORAGE CABINET 1 DOOR - TEMP. -15/-20 °C

Project .....  
Rev.: .....  
Zone: .....  
Location: .....



CODICE  
**BRI70BT**

MODELLO  
**RI70BT**

SERIE  
**REFRIGERATED  
CABINETS**

## Technical Information

SPECIFICATION	DATA
MATERIAL	BRI70BT
DIM. WIDTH	1000 mm
DIM. PRODUCTIVITY	1270 mm
DIM. HEIGHT	2325 mm
NET WEIGHT	200 Kg
PACKAGE VOLUME	2.48 m3
STANDARD POWER SUPPLY	230/1/50
ELECTRICAL POWER	0.53 kW
GAS/REFRIGERANT TYPE	R290A
REFRIGERATION POWER	1.379
CAPACITY	1480

# ROLL-IN STORAGE CABINET 1 DOOR - TEMP. -15/-20 °C

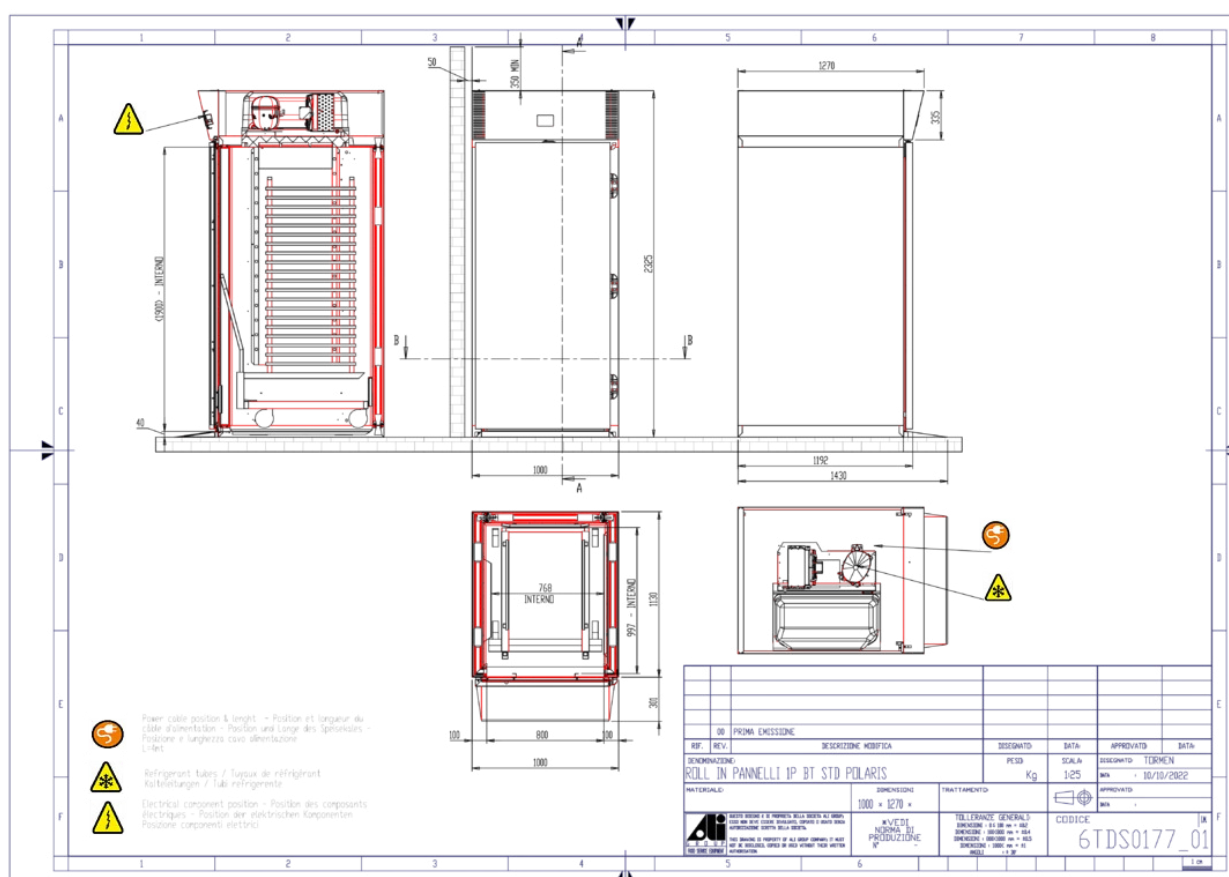
Project .....  
Rev.: .....  
Zone: .....  
Location: .....



CODICE  
BRI70BT

MODELLO  
RI70BT

SERIE  
REFRIGERATED  
CABINETS



## ROLL-IN STORAGE CABINET 1 DOOR - TEMP. -15/-20 °C

Project .....  
Rev.: .....  
Zone: .....  
Location: .....



CODICE  
**BRI70BT**

MODELLO  
**RI70BT**

SERIE  
**REFRIGERATED  
CABINETS**

# PRODUCT'S RANGE PLUS



User-friendly digital control. Quick and intuitive is an aid in daily work.



Thanks to the R290 gas supplied as standard for all available versions, Olis guarantees care and sustainability in all aspects of its product development.

## ROLL-IN STORAGE CABINET 1 DOOR - TEMP. -15/-20 °C

Project .....  
Rev.: .....  
Zone: .....  
Location: .....



CODICE  
**BRI70BT**

MODELLO  
**RI70BT**

SERIE  
**REFRIGERATED  
CABINETS**

### ACCESSORIES

CODE	MODELLO	DESCRIZIONE
TR 20 GN1/1 HT	<b>TR 20 GN1/1 HT</b>	20 RACK TROLLEY GN1/1 TEMP. -40°+280°
TR 20 GN2/1 HT	<b>TR 20 GN2/1 HT</b>	20 RACK TROLLEY GN1/2 TEMP. -40°+280°
TR 16 EN1	<b>TR 16 EN1</b>	16 TRAY TROLLEY EN 400X600
TR 32 EN1	<b>TR 32 EN1</b>	32 TRAY TROLLEY EN 400X600
TR 16 EN2	<b>TR 16 EN2</b>	16 TRAY TROLLEY EN 600X800
TR 32 EN2	<b>TR 32 EN2</b>	32 TRAY TROLLEY EN 600X800