

NEUTRAL ELEMENT WITH DRAWER L600 TOP VERSION

Project
Rev.:
Zone:
Location:



CODICE
CR1015109

MODELLO
Q70NEC/610

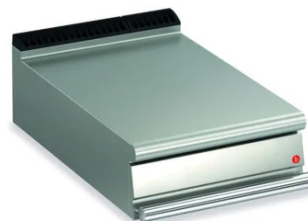
SERIE
QUEEN 7

GENERAL CHARACTERISTICS

For those who do not want to give up the quality and solidity of a Queen stove, the Series 7 offers a 700 mm depth and more compact dimensions to fit any room, burners available in various configurations and wattages, enhanced by the refined Scotch Brite finish.

Thanks to its extreme compositional freedom, every composition is possible: you can combine Model i tops with accessorizable oven and neutral bases and hygienic finishes; create customized solutions by matching and attaching equipment back to back, sideways "flush" perfectly sealed, or "bridge" structures, offering high-level solutions that always perfectly meet the chef's needs.

As a total guarantee, all equipment that make up a Queen7 kitchen are certified in compliance with international standards, including CE, GAR, AGA and others.



TECHNICAL SPECIFICATIONS

Stainless steel compartment Accessory with doors, drawers and heating kit.

Anti-tip guides for gastronorm containers.

Hinged door with athermic handle and magnetic lock, available with right or left opening.

Drawer mounted on stainless steel telescopic slides running on ball bearings.

Load capacity for each drawer kg 60.

NEUTRAL ELEMENT WITH DRAWER L600 TOP VERSION

Project
Rev.:
Zone:
Location:



CODICE
CR1015109

MODELLO
Q70NEC/610

SERIE
QUEEN 7

Technical Information

SPECIFICATION	DATA
MATERIAL	CR1015109
DEFINITION	Q70NEC/610 EL. NEUT. TOP M60 C/CAS
COMMERCIAL LINE	QUEEN
DIM. WIDTH	600 mm
DIM. PRODUCTIVITY	700 mm
DIM. HEIGHT	250 mm
NET WEIGHT	27 Kg
VOLUME (net)	0.105
PACKAGE LENGTH	640 mm
PACKAGE WIDTH	850 mm
PACKAGING HEIGHT	550 mm
PACKAGE VOLUME	0,300 m3
GROSS PACKING WEIGHT	35 Kg

NEUTRAL ELEMENT WITH DRAWER L600 TOP
VERSION

CODICE	MODELLO	SERIE
CR1015109	Q70NEC/610	QUEEN 7

Project
Rev.:
Zone:
Location:



NEUTRAL ELEMENT WITH DRAWER L600 TOP VERSION

Project
Rev.:
Zone:
Location:



CODICE
CR1015109

MODELLO
Q70NEC/610

SERIE
QUEEN 7

PRODUCT'S RANGE PLUS



Modular, easy to combine and robust.



Drawer with ergonomic handle



Drawers capacity GN 1/1 bowls

NEUTRAL ELEMENT WITH DRAWER L600 TOP VERSION

Project
Rev.:
Zone:
Location:



CODICE
CR1015109

MODELLO
Q70NEC/610

SERIE
QUEEN 7

ACCESSORIES

CODE	MODELLO	DESCRIZIONE
VB700	VB700	BOTTLE COMPARTMENT FOR MODULE 200