

EVO GAS FRYER 1 BOWL with ELECTRONIC CONTROL 23 LT - With basket lifter

Project
Rev.:
Zone:
Location:



CODICE
CR1209969

MODELLO
Q90FREV/G423A

SERIE
QUEEN 9

GENERAL CHARACTERISTICS

It is the choice of those who need maximum strength and power. Queen9 is distinguished by its 900 mm depth, a 20/10-thick work surface, double-crown burners, and the use of elegant stainless steel with a Scotch Brite finish.

Details that not only offer maximum functionality and aesthetics, but also take into account the practical and ergonomic needs of those who work.

The extreme freedom of composition allows top models to be combined with accessorizable oven and neutral base units, even with hygienic finishes.

With more than 350 models immediately available in the catalog, Queen9 is already ready to start giving its best.

In addition, all equipment that makes up a Queen9 kitchen is certified in compliance with international standards, including CE, GAR, AGA and others.



EVO GAS FRYER 1 BOWL with ELECTRONIC CONTROL 23 LT - With basket lifter

Project
Rev.:
Zone:
Location:



CODICE
CR1209969

MODELLO
Q90FREV/G423A

SERIE
QUEEN 9

TECHNICAL SPECIFICATIONS

Worktop, cooking tank and dashboard made of AISI 304 stainless steel.
Molded cooking vessel with internal profile radiused.
Equipped with a large front reservoir for oil and foam expansion.
Large cold zone at the bottom ensures longer integrity of the oil used.
Manual reset safety thermostat.
Removable filter, baskets, lid and manifold for the drain tap provided.
Height-adjustable stainless steel feet.
IPX5 degree of protection.
Gas version
Stainless steel burner outside the tank.
Oil temperature is regulated by thermostat.
Electric version
Armored heating element made of AISI 304 stainless steel, inside the pots rotatable by more than 90°.

Control panel with high-resolution 7" touch screen display, simple and intuitive.

Oil circulation and filtration

Automated basket lift. By programming recipes from the touch screen panel, the basket lifts automatically at the end of the set time.

Automatic choice from a selection of pre-set and tested recipes that can be stored by the user.

Thanks to the jet-proofing certification (IPX5) obtained through specific tests, knobs and under-knobs can be washed at the end of the working day without compromising functionality and safety.

The front bar is a comfortable foothold for the cook; it keeps a safe distance from the worktop and thus protects against accidental collisions with what is resting on the worktops and at the same time the handles.

EVO GAS FRYER 1 BOWL with ELECTRONIC CONTROL 23 LT - With basket lifter

Project
Rev.:
Zone:
Location:



CODICE
CR1209969

MODELLO
Q90FREV/G423A

SERIE
QUEEN 9

Technical Information

| SPECIFICATION | DATA |
|--------------------------|---------------------------------------|
| MATERIAL | CR1209969 |
| DEFINITION | Q90FREV/G423A FRIGGITRICE GAS 900 M40 |
| COMMERCIAL LINE | QUEEN |
| SUPPLY | MIXED |
| DIM. WIDTH | 400 mm |
| DIM. PRODUCTIVITY | 900 mm |
| DIM. HEIGHT | 870 mm |
| NET WEIGHT | 60.4 Kg |
| VOLUME (net) | 0.313 |
| PACKAGE LENGTH | 460 mm |
| PACKAGE WIDTH | 1020 mm |
| PACKAGING HEIGHT | 1460 mm |
| PACKAGE VOLUME | 0,685 m3 |
| GROSS PACKING WEIGHT | 71 Kg |
| STANDARD POWER SUPPLY | 220-240V 1N |
| FREQUENCY | 50 Hz |
| ELECTRICAL POWER | 0.1 kW |
| GAS POWER | 25 |
| GAS POWER (G25.3/25mbar) | 25,00 |
| IP GRADE | IPX5 |
| CAPACITY | 23 |
| CERTIFIED MODEL | Q90FREV/G423A |
| BASKET SIZE | 34x42x58,5 |

EVO GAS FRYER 1 BOWL with ELECTRONIC CONTROL
23 LT - With basket lifter

Project
Rev.:
Zone:
Location:

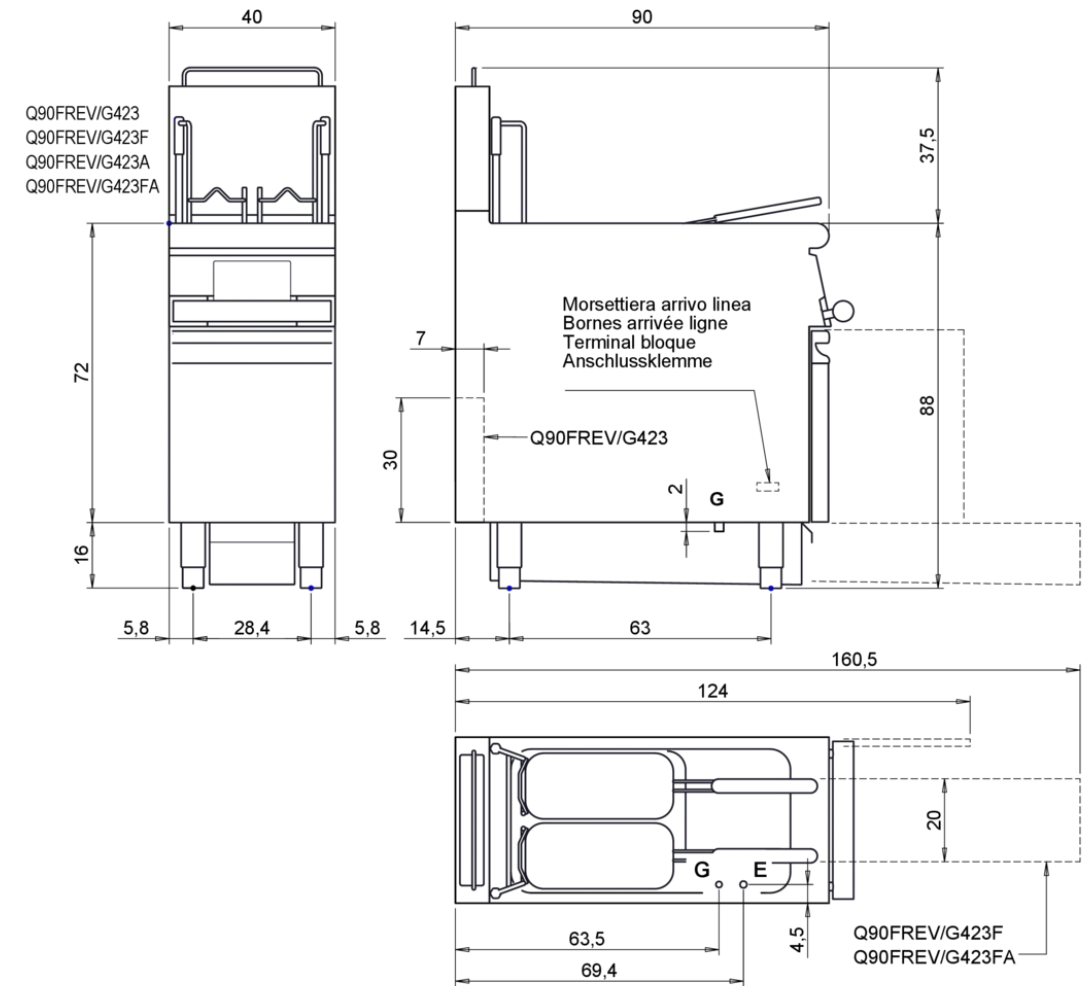


CODICE
CR1209969

MODELLO
Q90FREV/G423A

SERIE
QUEEN 9

MISURE IN cm - DIMENSIONS IN cm - ABMESSUNGEN IN cm- MESURES EN cm
MEDIDAS EN cm - MATEN IN cm - DIMENSIONES EN cm



| Legenda - Legende - Key - Légende - Leyenda - Legenda - Legenda | |
|--|--|
| E Pressacavo entrata linea elettrica - Stopfbuchse - Electric cable stress relief - Presse étoupe de câble él - Pisacable - Elektrische kabelwartel - Entrada cabo eléctrico | G Arrivo gas - Gasanschluss - Gas connection - Arrivée gaz - Union de gas - Gasaansluiting - Ligação gás EN 10226-1 R 1/2 ; EN ISO 228-1 G 1/2 (DK) |
| S Attacco scarico acqua - Wasserablauf - Water outlet - Vidange de l'eau - Desaguadero - Wateraftapaansluiting - Junção descarga água | H20 Arrivo acqua - Wasseranschluss - Water inlet - Arrivée eau - Union de água - Wateraansluiting - Junção alimentação água |
| S1 Scarico vasca - Wannenabflussrohr - Pan outlet - Vidange du bac - Descarga cuba - Water toevoer - Descarga da cuba | A1 = Calda - Heiss - Warm - Chaude - Caliente - Warm - Morno A2 = Fredda - Kalt - Cold - Froid - Fria - Koude - Frio |
| S2 Valvola di depressione - Anti-depression valve - Unterdruck ventil - Soupape de dépression - Válvula de depresión - Onderdrukkelep - Válvula de depressão | |
| S3 Scarico acqua intercapedine - Wasserablauf Zwischenraum - Jacket water drain Evacuation eau double envelope - Descarga de água interstícios - Afvoer water tussenruimte - Descarga de água na marmita com Sistema de aquecimento indirecto | |
| S4 Scarico - Abflussrohr - Drain - Tuyau d'évacuation - Tubo de drenaje - Aftapbuis - Tubulação de dreno | L Rubinetto di livello - Level tap - Wasserhahn - Robinet de niveau - Grifo de nivel - Niveaakraan - Torneira de nivel |

EVO GAS FRYER 1 BOWL with ELECTRONIC CONTROL 23 LT - With basket lifter

Project
Rev.:
Zone:
Location:



CODICE
CR1209969

MODELLO
Q90FREV/G423A

SERIE
QUEEN 9

PRODUCT'S RANGE PLUS



Automated basket lift. By programming recipes from the touch screen panel, the basket lifts automatically at the end of the set time.



Automatic choice from a selection of pre-set and tested recipes that can be stored by the user.



Industry 4.0 connectivity-ready version. Model T4w



Control panel with high-resolution 7" touch screen display, simple and intuitive.



In the electric version with 22-liter tank, the heating element can be rotated more than 90° in the tank.

Oil circulation and filtration



EVO GAS FRYER 1 BOWL with ELECTRONIC CONTROL 23 LT - With basket lifter

Project
Rev.:
Zone:
Location:



CODICE
CR1209969

MODELLO
Q90FREV/G423A

SERIE
QUEEN 9

ACCESSORIES

| CODE | MODELLO | DESCRIZIONE |
|-----------|-----------|--|
| CR1353969 | QCF22/23P | STAINLESS STEEL BASKET FOR FRYERS 22/23P LT |
| CR1353979 | QCF22/23 | 22/23 L STAINLESS STEEL BASKET FOR FRYERS |
| CR1015399 | Q9KRS23HF | Tank filling and emptying kit for versions with automatic filtration |
| CR1652569 | 9FFG23 | TANK BOTTOM FILTER FOR GAS FRYERS 23 LT |