

# ROLL-IN STORAGE CABINET COMPACT MONOSCOCK

## 1 DOOR - TEMP. -15/-20 °C

Project .....  
Rev.: .....  
Zone: .....  
Location: .....



CODICE  
BRIBT-COMPACT

MODELLO  
RIBT-COMPACT

SERIE  
REFRIGERATED  
CABINETS

## GENERAL CHARACTERISTICS

One-piece construction with AISI304 stainless steel interior and exterior finish.

Insulation thickness 85 mm high density.

Dashboard openable for easy periodic maintenance (condenser cleaning).

External back and sternum base in pre-painted steel.

Magnetic gasket on all four sides and counter-magnet on the gasket rebates.

Ergonomic full-height handle recessed into the front of the door for easy opening in any type of installation.

Inner compartment with 26-position moulded sides, 3 Rilsan GN2/1 grids included.

Foamed engine compartment sides for better soundproofing and greater strength.

Hot gas defrosting and defrost water disposal system without energy consumption.

Indirect ventilation thanks to the full-height ducting system for optimal air circulation and uniform temperature distribution.

Environmentally friendly refrigerant R290



## TECHNICAL SPECIFICATIONS

Monocoque construction in AISI304 Scotch-Brite satin stainless steel  
Insulation in CFC and HCFC-free PU, thickness 80 mm (70mm version COMPACT)

Automatic defrosting and evaporation of condensed water

Full-height ergonomic handles and magnetic seals on 3 sides

Internal bumper on all sides

Monocoque construction in AISI304 Scotch-Brite satin stainless steel.

Capacity of the wheeled containers: GN 2/1 or EN 400x600 mm or 600x800 mm.

Finely SCOTCH-BRITE satined exterior PU, CFC and HCFC free insulation, thickness 70 mm.

Automatic defrosting and evaporation of condensed water.

Large capacity cell allows the introduction of trolleys with maximum dimensions: 660x800x1860 mm.

Full-height ergonomic handles and magnetic seals on 3 sides.

40mm Insulated floor in AISI 304 Stainless steel for the BT version.

Internal bumper on all sides.

Touch display.

ROLL-IN STORAGE CABINET COMPACT MONOSCOCK  
1 DOOR - TEMP. -15/-20 °C

Project .....  
Rev.: .....  
Zone: .....  
Location: .....



CODICE  
BRIBT-COMPACT

MODELLO  
RIBT-COMPACT

SERIE  
REFRIGERATED  
CABINETS

Technical Information

SPECIFICATION	DATA
MATERIAL	BRIBT-COMPACT
DIM. WIDTH	850 mm
DIM. PRODUCTIVITY	970 mm
DIM. HEIGHT	2350 mm
NET WEIGHT	210 Kg
PACKAGE VOLUME	2.48 m3
STANDARD POWER SUPPLY	230/1/50
ELECTRICAL POWER	0.86 kW
GAS/REFRIGERANT TYPE	R290a
REFRIGERATION POWER	1.369
CAPACITY	878

ROLL-IN STORAGE CABINET COMPACT MONOSCOCK  
1 DOOR - TEMP. -15/-20 °C

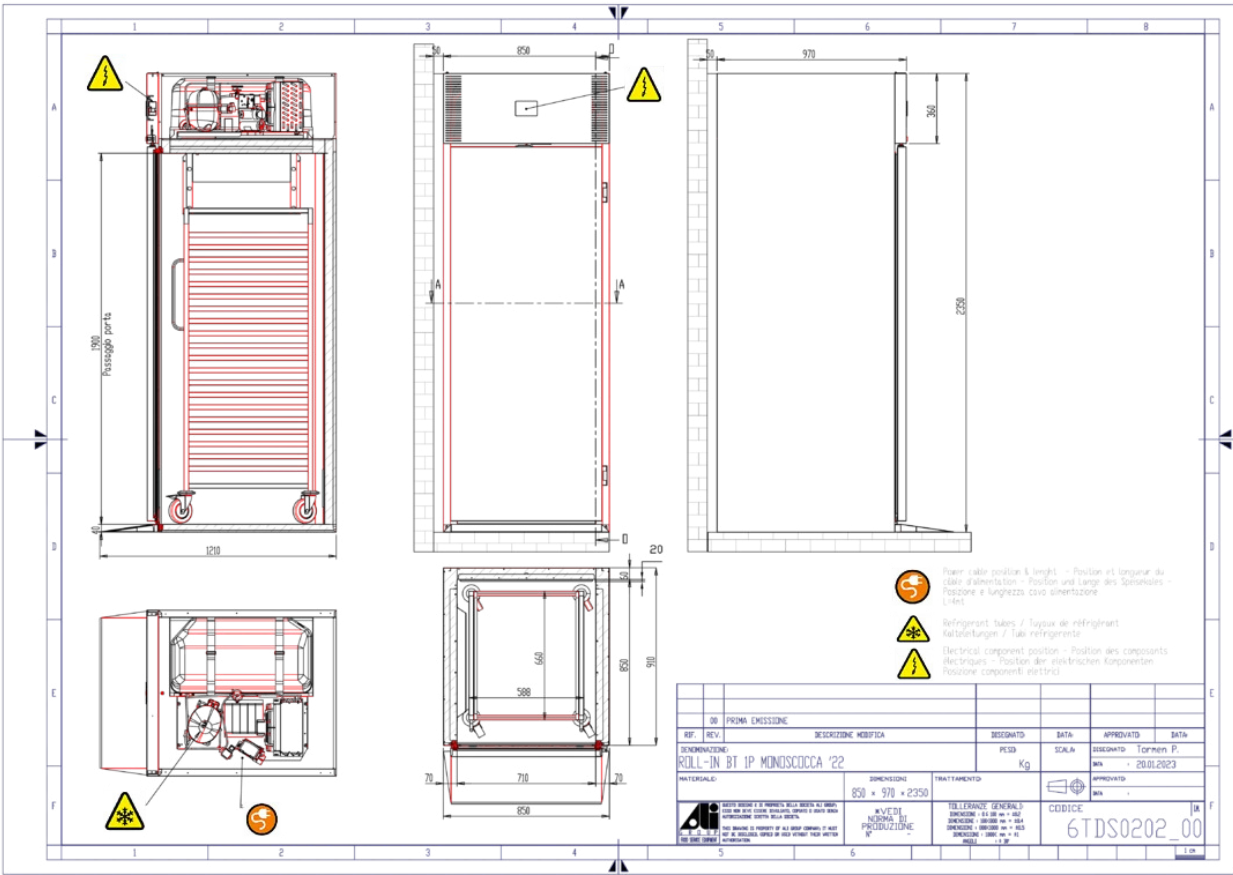
Project .....  
Rev.: .....  
Zone: .....  
Location: .....



CODICE  
BIBT-COMPACT

MODELLO  
RIBT-COMPACT

SERIE  
REFRIGERATED  
CABINETS



**ROLL-IN STORAGE CABINET COMPACT MONOSCOCK**  
**1 DOOR - TEMP. -15/-20 °C**

Project .....  
Rev.: .....  
Zone: .....  
Location: .....



CODICE  
**BRIBT-COMPACT**

MODELLO  
**RIBT-COMPACT**

SERIE  
**REFRIGERATED  
CABINETS**

# PRODUCT'S RANGE PLUS



User-friendly digital control. Quick and intuitive is an aid in daily work.



Thanks to the R290 gas supplied as standard for all available versions, Olis guarantees care and sustainability in all aspects of its product development.

ROLL-IN STORAGE CABINET COMPACT MONOSCOCK  
1 DOOR - TEMP. -15/-20 °C

CODICE BRIBT-COMPACT	MODELLO RIBT-COMPACT	SERIE REFRIGERATED CABINETS
-------------------------	-------------------------	-----------------------------------

Project .....  
Rev.: .....  
Zone: .....  
Location: .....



ACCESSORIES

CODE	MODELLO	DESCRIZIONE
TR COMPACT	TR COMPACT	18 TRAY TROLLEY 588X660X1645 75 MM PITCH