

GAS FRY-TOP PLATE 1/2 SMOOTH 1/2 RIBBED CHROME - TOP VERSION

Project
Rev.:
Zone:
Location:



CODICE
CR1010569

MODELLO
N550FTT/G925

SERIE
SERIE GIANO

GENERAL CHARACTERISTICS

The Giano pass-through Series appliances are characterized by their great versatility, the perfect combination of modules, and their robustness, thanks to 2 mm thick laser-cut AISI 304 cooking surfaces.

These peculiarities make it possible to make firing blocks according to specific customer requirements.

Reliability and high efficiency are ensured by the use of tested components and the high efficiency of the heating elements used.

Support bases can be equipped with pass-through ovens, ventilated hot cabinets, neutral, or cantilevered or bridged.

Machines all complying with CE regulations.

RAL paint treatment can be requested.



TECHNICAL SPECIFICATIONS

Stainless steel outer coatings and Scotch Brite finish.

Tops with a thickness of 2 mm.

Contoured dashboards with controls angled toward the operator.

Cooking plate made of soft iron (normal plate), coated with polished hard chrome (chrome plate).

Large fat collection drawer.

Self-stabilized flame burner.

Temperature regulation by thermostatic valve with safety thermocouple (115°C-300°C).

Piezo ignition.

GAS FRY-TOP PLATE 1/2 SMOOTH 1/2 RIBBED CHROME - TOP VERSION

Project
Rev.:
Zone:
Location:



CODICE
CR1010569

MODELLO
N550FTT/G925

SERIE
SERIE GIANO

Technical Information

| SPECIFICATION | DATA |
|--------------------------|---|
| MATERIAL | CR1010569 |
| DEFINITION | N550FTT/G925 FTG 1/2 RIG. CROM. M90 TOP |
| COMMERCIAL LINE | SERIE 1100 |
| SUPPLY | GAS |
| DIM. WIDTH | 900 mm |
| DIM. PRODUCTIVITY | 550 mm |
| DIM. HEIGHT | 280 mm |
| NET WEIGHT | 84 Kg |
| VOLUME (net) | 0.139 |
| PACKAGE LENGTH | 650 mm |
| PACKAGE WIDTH | 940 mm |
| PACKAGING HEIGHT | 1280 mm |
| PACKAGE VOLUME | 0,782 m3 |
| GROSS PACKING WEIGHT | 110 Kg |
| GAS POWER | 9.5 |
| GAS POWER (G25.3/25mbar) | 9,00 |
| GAS/REFRIGERANT TYPE | GPL 28-30/37 mbar |
| CERTIFIED MODEL | N550FTT/G925 |

GAS FRY-TOP PLATE 1/2 SMOOTH 1/2 RIBBED
CHROME - TOP VERSION

Project
Rev.:
Zone:
Location:



CODICE
CR1010569

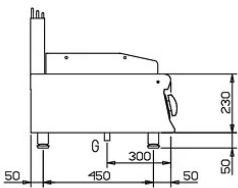
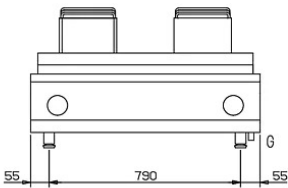
MODELLO
N550FTT/G925

SERIE
SERIE GIANO

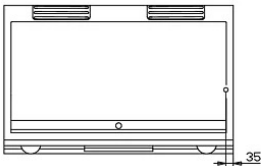
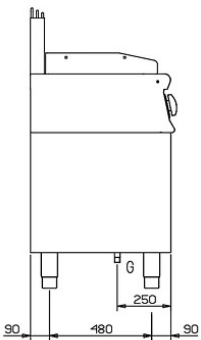
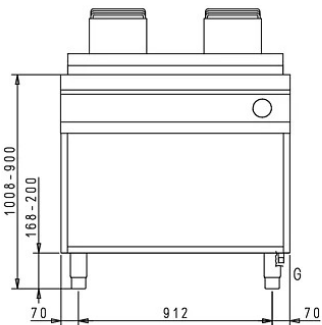
SCHEMA DI INSTALLAZIONE - INSTALLATION DIAGRAM - INSTALLATIONSPLAN - SCHÉMA D'INSTALLATION -
ESQUEMA DE INSTALACION -INSTALLATIESCHEMA - IINSTALLATIONSRTNINGAR

MISURE IN mm - DIMENSIONS IN mm - ABMESSUNGEN IN mm
MESURES EN mm - MEDIDAS EN mm - MATEN IN mm

| | |
|--------------|--------------|
| NFT11C9GT | EBGT4T... |
| 550/90FTT... | N550FTT/G... |



| | |
|---------------|---------------------------------|
| NFT119GT | EBGT4A... EBGT4G... |
| 550/90FTTG... | N550FTTVP/G... N550FTTV/G... |



Legenda - Legende - Key - Legende - Leyenda - Legenda

- E Pressacavo entrata linea elettrica - Stopfbuchse
Electric cable stress relief - Presse etoupr de cable el
Pisacable - Elektrische kabelwartel
- G Attacco arrivo gas - Gasanschluss - Gas connection
Arrive gaz - Union da gas - Gasaanluiting
EN 10226-1 R 1/2; EN ISO 228-1 G 1/2 (DK)

GAS FRY-TOP PLATE 1/2 SMOOTH 1/2 RIBBED CHROME - TOP VERSION

Project
Rev.:
Zone:
Location:



CODICE
CR1010569

MODELLO
N550FTT/G925

SERIE
SERIE GIANO

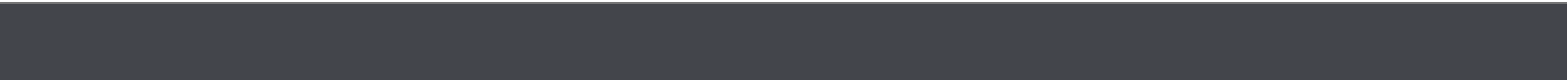
ACCESSORIES

| CODE | MODELLO | DESCRIZIONE |
|----------------|--------------------|--|
| CR1011729 | 1100KC4 | DRAWER KIT FOR NEUTRAL BASE 450 MM |
| CR1011739 | 1100KC8 | DRAWER KIT FOR NEUTRAL BASE 900 MM |
| BN418032900010 | 45/1100 | JANUS SERIES DOOR |
| BN2564200 | GA | FEET - HIGH LEG |
| BN2564210 | GB | FEET - LOW LEG |
| CR1011769 | NZA135 | FRONT SKIRTING - MODULE 1350 |
| CR1011779 | NZA180 | FRONT SKIRTING - MODULE 1800 |
| CR1011789 | NZA225 | FRONT SKIRTING - MODULE 2250 |
| CR1011799 | NZA270 | FRONT SKIRTING - MODULE 2700 |
| BN2593590 | CMF1109 | FRONT HANDRAIL |
| BN2593591 | CMF1113 | FRONT HANDRAIL |
| BN2593592 | CMF1118 | FRONT HANDRAIL |
| BN2593593 | CMF1122 | FRONT HANDRAIL |
| BN2593594 | CMF1127 | FRONT HANDRAIL |
| BN2593580 | CMA1109 | PERIMETER HANDRAIL |
| BN2593581 | CMA1113 | PERIMETER HANDRAIL |
| BN2593582 | CMA1118 | PERIMETER HANDRAIL |
| BN2593583 | CMA1122 | PERIMETER HANDRAIL |
| BN2593584 | CMA1127 | PERIMETER HANDRAIL |
| BN2593599 | CMT11 | END ELEMENT FOR TOP |
| CGPT 1190 | CGPT 1190 | AMI HOLDER STRUCTURE |
| CGPT 11135 | CGPT 11135 | AMI HOLDER STRUCTURE |
| CGPT 11180 | CGPT 11180 | AMI HOLDER STRUCTURE |
| CGPT 11225 | CGPT 11225 | AMI HOLDER STRUCTURE |
| CGPT 1127 | CGPT 1127 | AMI HOLDER STRUCTURE |
| CCPG110N | CCPG110N | NEUTRAL PILLAR |
| ST1113A | ST1113A | ALUMINISED STRUCTURE |
| ST1118A | ST1118A | ALUMINISED STRUCTURE |
| ST1122A | ST1122A | ALUMINISED STRUCTURE |
| ST1127A | ST1127A | ALUMINISED STRUCTURE |
| ST1113X | ST1113X | STAINLESS STEEL STRUCTURE |
| ST1118X | ST1118X | STAINLESS STEEL STRUCTURE |
| ST1122X | ST1122X | STAINLESS STEEL STRUCTURE |
| ST1127X | ST1127X | STAINLESS STEEL STRUCTURE |
| SP1113X | SP1113X | STAINLESS STEEL STRUCTURE |
| SP1118X | SP1118X | STAINLESS STEEL STRUCTURE |
| SP1122X | SP1122X | STAINLESS STEEL STRUCTURE |
| BN2593475 | BV-RG11 | PAIR OF GN 1/1 GRID HOLDERS |
| BN0221000001 | 20/1100MCRP | WATER COLUMN SUPPORT WITH TAP - GIANO SERIES |
| BN2590145 | RUB110 | Faucet 45x55x62 65 H |
| CR1355819 | CR1355819 | GIANO SERIES WHEEL KIT |
| CR1011749 | NZA45 | FRONT SKIRTING - MODULE 450 |
| CR1011759 | NZA90 | FRONT SKIRTING - MODULE 900 |

GAS FRY-TOP PLATE 1/2 SMOOTH 1/2 RIBBED
CHROME - TOP VERSION

| | | |
|-----------|--------------|-------------|
| CODICE | MODELLO | SERIE |
| CR1010569 | N550FTT/G925 | SERIE GIANO |

Project
Rev.:
Zone:
Location:



CR1011809 NZL110 SIDE PLINTH THROUGH