

KITCHEN 2 ELECTRIC SQUARE PLATES TOP VERSION

Project
Rev.:
Zone:
Location:



CODICE
CR1012699

MODELLO
Q70PC/E401

SERIE
QUEEN 7

GENERAL CHARACTERISTICS

For those who do not want to give up the quality and solidity of a Queen stove, the Series 7 offers a 700 mm depth and more compact dimensions to fit any room, burners available in various configurations and wattages, enhanced by the refined Scotch Brite finish.

Thanks to its extreme compositional freedom, every composition is possible: you can combine Model i tops with accessorizable oven and neutral bases and hygienic finishes; create customized solutions by matching and attaching equipment back to back, sideways "flush" perfectly sealed, or "bridge" structures, offering high-level solutions that always perfectly meet the chef's needs.

As a total guarantee, all equipment that make up a Queen7 kitchen are certified in compliance with international standards, including CE, GAR, AGA and others.



TECHNICAL SPECIFICATIONS

All-molded hob made from a single sheet of thick stainless steel.
Cast-iron radiant plates, fixed watertight to eliminate any liquid infiltration on electrical wiring.

6-position, ergonomic, recessed and tilted power output knobs.
Warning lights indicating "plates under tension."

Electric oven

Stainless steel cooking chamber (57.2x58x30 cm), thermally insulated and equipped with 3 anti-tip guides for Gastronorm 1/1 containers.

Stainless steel door and counter door, perfectly insulated and mounted on self-balancing hinges.

Ergonomic full-length, thermally insulated handle.

The temperature is adjusted by means of a 7-position selector switch, and a warning light indicating the activation of the heating is located on the dashboard.

Equipment certified for low voltage directive 2014/35/EU according to the international CB scheme.

Thanks to the jet-proofing certification obtained through specific tests, knobs and under-knobs can be washed at the end of the working day without compromising functionality and safety.

The front bar is a comfortable foothold for the cook; it keeps a safe distance from the worktop and thus protects against accidental collisions with what is resting on the worktops and at the same time the handles.

KITCHEN 2 ELECTRIC SQUARE PLATES TOP VERSION

Project
Rev.:
Zone:
Location:



CODICE
CR1012699

MODELLO
Q70PC/E401

SERIE
QUEEN 7

Technical Information

SPECIFICATION	DATA
MATERIAL	CR1012699
DEFINITION	Q70PC/E401 2 P.E.L.Q. TOP
COMMERCIAL LINE	QUEEN
SUPPLY	ELECTRICS
DIM. WIDTH	400 mm
DIM. PRODUCTIVITY	700 mm
DIM. HEIGHT	250 mm
NET WEIGHT	31 Kg
VOLUME (net)	0.07
PACKAGE LENGTH	460 mm
PACKAGE WIDTH	850 mm
PACKAGING HEIGHT	570 mm
PACKAGE VOLUME	0,223 m3
GROSS PACKING WEIGHT	38 Kg
STANDARD POWER SUPPLY	380-415V 3N
FREQUENCY	50-60 Hz
ELECTRICAL POWER	5.2 kW
N. FIRES/PLATES	DUE FUOCHI
IP GRADE	IPX5
CERTIFIED MODEL	Q70PC/E401

KITCHEN 2 ELECTRIC SQUARE PLATES TOP VERSION

Project
Rev.:
Zone:
Location:

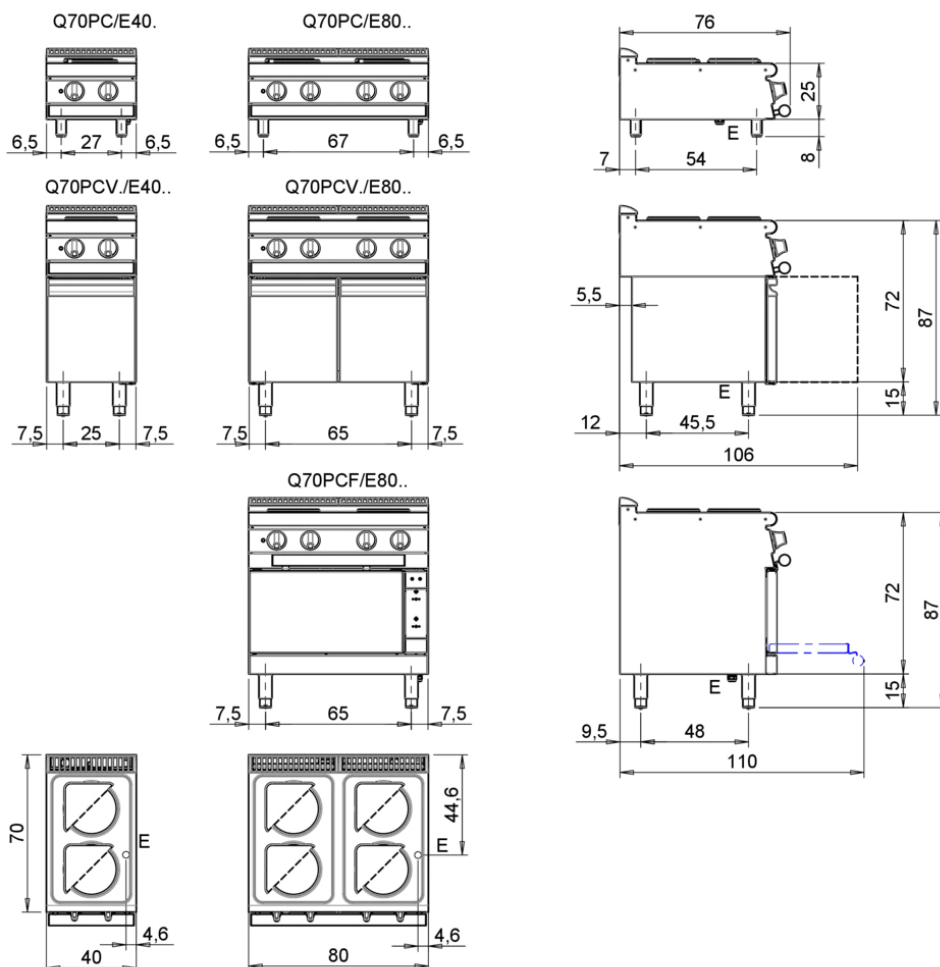


CODICE
CR1012699

MODELLO
Q70PC/E401

SERIE
QUEEN 7

MISURE IN cm - DIMENSIONS IN cm - ABMESSUNGEN IN cm - MESURES EN cm
MEDIDAS EN cm - MATEN IN cm - DIMENSIONES EN cm



Legenda - Legende - Key - Légende - Leyenda - Legenda - Legenda	
E Pressacavo entrata linea elettrica - Stopfbuchse - Electric cable stress relief - Presse étoupe de câble él - Pisacable - Elektrische kabelwartel - Entrada cabo eléctrico	G Arrivo gas - Gasanschluss - Gas connection - Arrivée gaz - Union de gas - Gasaansluiting - Ligação gás
S Attacco scarico acqua - Wasserablauf - Water outlet - Vidange de l'eau - Desaguadero - Waterafropaansluiting - Junção descarga água	H20 Arrivo acqua - Wasseranschluss - Water inlet - Arrivée eau - Union de água - Wateraansluiting - Junção alimentação água
S1 Scarico vasca - Wannenabflussrohr - Pan outlet - Vidange du bac - Descarga cuba - Water toevoer - Descarga da cuba	A1 = Calda - Heiss - Warm - Chaude - Caliente - Warm - Morno A2 = Fredda - Kalt - Cold - Froid - Fria - Koude - Frio
S2 Valvola di depressione - Anti-depression valve - Unterdruck ventil - Soupape de dépression - Válvula de depresión - Onderdrukkelep - Válvula de depressão	L Rubinetto di livello - Level tap - Wasserhahn - Robinet de niveau - Grifo de nivel - Niveaakraan - Torneira de nível
S3 Scarico acqua intercapedine - Wasserablauf Zwischenraum - Jacket water drain Evacuation eau double envelope - Descarga de água interstícios - Afvoer water tussenruimte - Descarga de água na marmitta com Sistema de aquecimento indirecto	
S4 Scarico - Abflussrohr - Drain - Tuyau d'évacuation - Tubo de drenaje - Aftapbuis - Tubulação de dreno	

KITCHEN 2 ELECTRIC SQUARE PLATES TOP VERSION

Project
Rev.:
Zone:
Location:

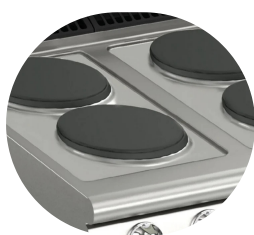


CODICE
CR1012699

MODELLO
Q70PC/E401

SERIE
QUEEN 7

PRODUCT'S RANGE PLUS



Ø 22 cm cast-iron heating plates with 2.6 kW power, hermetically attached to the flatbed.



22x22 cast iron heating plates with 2.6 kW of power, hermetically attached to the molded top



The temperature is adjusted by means of a 7-position selector switch, and a warning light indicating the activation of the heating is located on the dashboard.