

# EVO GAS FRYER 1 TANK ELECTRONIC CONTROL 23 LT

## - Basic version

Project .....  
Rev.: .....  
Zone: .....  
Location: .....



CODICE  
CR1209949

MODELLO  
Q90FREV/G423

SERIE  
QUEEN 9

## GENERAL CHARACTERISTICS

It is the choice of those who need maximum strength and power. Queen9 is distinguished by its 900 mm depth, a 20/10-thick work surface, double-crown burners, and the use of elegant stainless steel with a Scotch Brite finish.

Details that not only offer maximum functionality and aesthetics, but also take into account the practical and ergonomic needs of those who work.

The extreme freedom of composition allows top models to be combined with accessorizable oven and neutral base units, even with hygienic finishes.

With more than 350 models immediately available in the catalog, Queen9 is already ready to start giving its best.

In addition, all equipment that makes up a Queen9 kitchen is certified in compliance with international standards, including CE, GAR, AGA and others.



# EVO GAS FRYER 1 TANK ELECTRONIC CONTROL 23 LT

## - Basic version

Project .....  
Rev.: .....  
Zone: .....  
Location: .....



CODICE  
CR1209949

MODELLO  
Q90FREV/G423

SERIE  
QUEEN 9

## TECHNICAL SPECIFICATIONS

Worktop, cooking tank and dashboard made of AISI 304 stainless steel.  
Molded cooking vessel with internal profile radiused.  
Equipped with a large front reservoir for oil and foam expansion.  
Large cold zone at the bottom ensures longer integrity of the oil used.  
Manual reset safety thermostat.  
Removable filter, baskets, lid and manifold for the drain tap provided.  
Height-adjustable stainless steel feet.  
IPX5 degree of protection.  
Gas version  
Stainless steel burner outside the tank.  
Oil temperature is regulated by thermostat.  
Electric version

Armored heating element made of AISI 304 stainless steel, inside the pots rotatable by more than 90°.

Control panel with high-resolution 7" touch screen display, simple and intuitive.

Oil circulation and filtration

Automatic choice from a selection of pre-set and tested recipes that can be stored by the user.

Thanks to the jet-proofing certification (IPX5) obtained through specific tests, knobs and under-knobs can be washed at the end of the working day without compromising functionality and safety.

The front bar is a comfortable foothold for the cook; it keeps a safe distance from the worktop and thus protects against accidental collisions with what is resting on the worktops and at the same time the handles.

# EVO GAS FRYER 1 TANK ELECTRONIC CONTROL 23 LT

## - Basic version

Project .....  
Rev.: .....  
Zone: .....  
Location: .....



CODICE  
CR1209949

MODELLO  
Q90FREV/G423

SERIE  
QUEEN 9

### Technical Information

SPECIFICATION	DATA
MATERIAL	CR1209949
DEFINITION	Q90FREV/G423 FRIGGITRICE GAS 900 M40
COMMERCIAL LINE	QUEEN
SUPPLY	MIXED
DIM. WIDTH	400 mm
DIM. PRODUCTIVITY	900 mm
DIM. HEIGHT	870 mm
NET WEIGHT	58.4 Kg
VOLUME (net)	0.313
PACKAGE LENGTH	460 mm
PACKAGE WIDTH	1020 mm
PACKAGING HEIGHT	1460 mm
PACKAGE VOLUME	0,685 m3
GROSS PACKING WEIGHT	69 Kg
STANDARD POWER SUPPLY	220-240V 1N
FREQUENCY	50 Hz
ELECTRICAL POWER	0.1 kW
GAS POWER	25
GAS POWER (G25.3/25mbar)	25,00
IP GRADE	IPX5
CAPACITY	23
CERTIFIED MODEL	Q90FREV/G423
BASKET SIZE	34x42x58,5

EVO GAS FRYER 1 TANK ELECTRONIC CONTROL 23 LT

- Basic version

Project .....  
Rev.: .....  
Zone: .....  
Location: .....

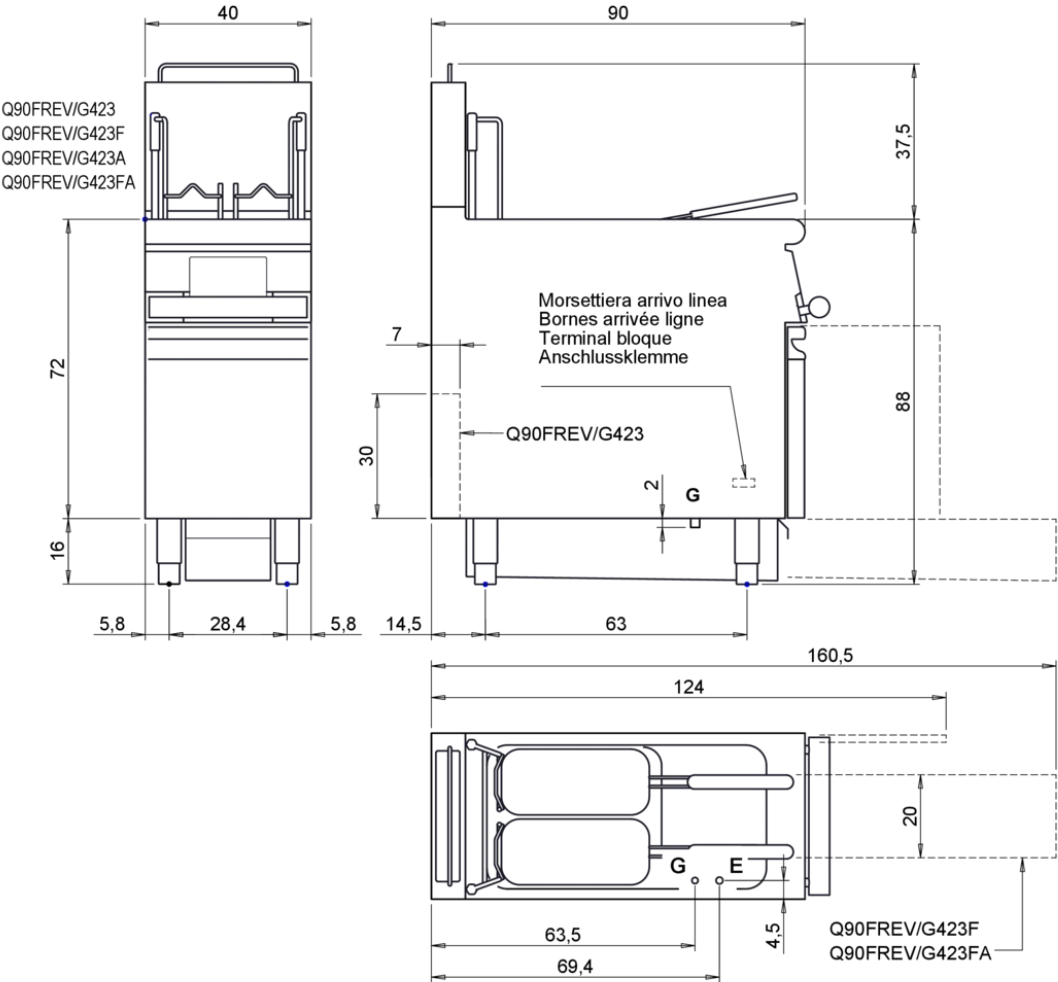


CODICE  
CR1209949

MODELLO  
Q90FREV/G423

SERIE  
QUEEN 9

MISURE IN cm - DIMENSIONS IN cm - ABMESSUNGEN IN cm- MESURES EN cm  
MEDIDAS EN cm - MATEN IN cm - DIMENSIONES EN cm



Legenda - Legende - Key - Légende - Leyenda - Legenda - Legenda	
<b>E</b> Pressacavo entrata linea elettrica - Stopfbuchse - Electric cable stress relief - Presse étoupe de câble él - Pisacable - Elektrische kabelwartel - Entrada cabo eléctrico	<b>G</b> Arrivo gas - Gasanschluss - Gas connection - Arrivée gaz - Union de gas - Gasaansluiting - Ligação gás <b>EN 10226-1 R 1/2 ; EN ISO 228-1 G 1/2 (DK)</b>
<b>S</b> Attacco scarico acqua - Wasserablauf - Water outlet - Vidange de l'eau - Desaguadero - Wateraftapaansluiting - Junção descarga água	<b>H20</b> Arrivo acqua - Wasseranschluss - Water inlet - Arrivée eau - Union de água - Wateraansluiting - Junção alimentação água
<b>S1</b> Scarico vasca - Wannenabflussrohr - Pan outlet - Vidange du bac - Descarga cuba - Water toevoer - Descarga da cuba	<b>A1</b> = Calda - Heiss - Warm - Chaude - Caliente - Warm - Morno <b>A2</b> = Fredda - Kalt - Cold - Froid - Fria - Koude - Frio
<b>S2</b> Valvola di depressione - Anti-depression valve - Unterdruck ventil - Soupape de dépression - Válvula de depresión - Onderdrukklep - Válvula de depressão	
<b>S3</b> Scarico acqua intercapedine - Wasserablauf Zwischenraum - Jacket water drain Evacuation eau double envelope - Descarga de água interstícios - Afvoer water tussenruimte - Descarga de água na marmitta com Sistema de aquecimento indirecto	
<b>S4</b> Scarico - Abflussrohr - Drain - Tuyau d'évacuation - Tubo de drenaje - Aftapbuis - Tubulação de dreno	<b>L</b> Rubinetto di livello - Level tap - Wasserhahn - Robinet de niveau - Grifo de nivel - Niveaakraan - Torneira de nivel

# EVO GAS FRYER 1 TANK ELECTRONIC CONTROL 23 LT

## - Basic version

Project .....  
Rev.: .....  
Zone: .....  
Location: .....



CODICE  
CR1209949

MODELLO  
Q90FREV/G423

SERIE  
QUEEN 9

# PRODUCT'S RANGE PLUS



Automated basket lift. By programming recipes from the touch screen panel, the basket lifts automatically at the end of the set time.



Automatic choice from a selection of pre-set and tested recipes that can be stored by the user.



Industry 4.0 connectivity-ready version. Model T4w



Control panel with high-resolution 7" touch screen display, simple and intuitive.



In the electric version with 22-liter tank, the heating element can be rotated more than 90° in the tank.

Oil circulation and filtration



# EVO GAS FRYER 1 TANK ELECTRONIC CONTROL 23 LT

## - Basic version

Project .....  
Rev.: .....  
Zone: .....  
Location: .....



CODICE  
CR1209949

MODELLO  
Q90FREV/G423

SERIE  
QUEEN 9

## ACCESSORIES

CODE	MODELLO	DESCRIZIONE
CR1353969	QCF22/23P	STAINLESS STEEL BASKET FOR FRYERS 22/23P LT
CR1353979	QCF22/23	22/23 L STAINLESS STEEL BASKET FOR FRYERS
CR1015399	Q9KRS23HF	Tank filling and emptying kit for versions with automatic filtration
CR1652569	9FFG23	TANK BOTTOM FILTER FOR GAS FRYERS 23 LT