

NEUTRAL ELEMENT WITH DRAWER L800 ON OPEN COMPARTMENT

Project
Rev.:
Zone:
Location:



CODICE
CR1018759

MODELLO
Q90NECV/810

SERIE
QUEEN 9

GENERAL CHARACTERISTICS

It is the choice of those who need maximum strength and power. Queen9 is distinguished by its 900 mm depth, a 20/10-thick work surface, double-crown burners, and the use of elegant stainless steel with a Scotch Brite finish.

Details that not only offer maximum functionality and aesthetics, but also take into account the practical and ergonomic needs of those who work.

The extreme freedom of composition allows top models to be combined with accessorizable oven and neutral base units, even with hygienic finishes.

With more than 350 models immediately available in the catalog, Queen9 is already ready to start giving its best.

In addition, all equipment that makes up a Queen9 kitchen is certified in compliance with international standards, including CE, GAR, AGA and others.



TECHNICAL SPECIFICATIONS

Stainless steel compartment can be accessorized with doors, drawers and heating kit.

Anti-tip guides for gastronorm containers.

Hinged door with athermic handle and magnetic lock, available with right or left opening.

Drawer mounted on stainless steel telescopic slides running on ball bearings.

Load capacity for each drawer kg 60.

Drawer with ergonomic handle

Drawers for GN 1/1

Thanks to the jet-proofing certification (IPX5) obtained through specific tests, knobs and under-knobs can be washed at the end of the working day without compromising functionality and safety.

The front bar is a comfortable foothold for the cook; it keeps a safe distance from the worktop and thus protects against accidental collisions with what is resting on the worktops and at the same time the handles.

NEUTRAL ELEMENT WITH DRAWER L800 ON OPEN
COMPARTMENT

Project
Rev.:
Zone:
Location:



CODICE CR1018759	MODELLO Q90NECV/810	SERIE QUEEN 9
---------------------	------------------------	------------------

Technical Information

SPECIFICATION	DATA
MATERIAL	CR1018759
DEFINITION	Q90NECV/810 EL. NEUT. A/G M80 C/CAS
COMMERCIAL LINE	QUEEN
DIM. WIDTH	800 mm
DIM. PRODUCTIVITY	900 mm
DIM. HEIGHT	870 mm
NET WEIGHT	63 Kg
VOLUME (net)	0.626
PACKAGE LENGTH	860 mm
PACKAGE WIDTH	1020 mm
PACKAGING HEIGHT	1150 mm
PACKAGE VOLUME	1,010 m3
GROSS PACKING WEIGHT	75.8 Kg

NEUTRAL ELEMENT WITH DRAWER L800 ON OPEN
COMPARTMENT

Project
Rev.:
Zone:
Location:



CODICE
CR1018759

MODELLO
Q90NECV/810

SERIE
QUEEN 9

NEUTRAL ELEMENT WITH DRAWER L800 ON OPEN COMPARTMENT

Project
Rev.:
Zone:
Location:



CODICE
CR1018759

MODELLO
Q90NECV/810

SERIE
QUEEN 9

PRODUCT'S RANGE PLUS



Thanks to the jet-proofing certification (IPX5) obtained through specific tests, knobs and under-knobs can be washed at the end of the working day without compromising functionality and safety.



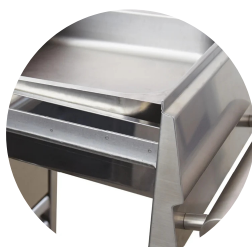
The front bar is a comfortable foothold for the cook; it keeps a safe distance from the worktop and thus protects against accidental collisions with what is resting on the worktops and at the same time the handles.



Thanks to the jet-proofing certification (IPX5) obtained through specific tests, knobs and under-knobs can be washed at the end of the working day without compromising functionality and safety.



Drawers for GN 1/1



Thanks to the jet-proofing certification (IPX5) obtained through specific tests, knobs and under-knobs can be washed at the end of the working day without compromising functionality and safety.

NEUTRAL ELEMENT WITH DRAWER L800 ON OPEN
COMPARTMENT

CODICE	MODELLO	SERIE
CR1018759	Q90NECV/810	QUEEN 9

Project
Rev.:
Zone:
Location:



ACCESSORIES

CODE	MODELLO	DESCRIZIONE
CR1018869	Q90VB	BOTTLE COMPARTMENT FOR MODULE 200