

NEUTRAL ELEMENT WITH DRAWER L600 TOP VERSION

Project
Rev.:
Zone:
Location:



CODICE
CR1018699

MODELLO
Q90NEC/610

SERIE
QUEEN 9

GENERAL CHARACTERISTICS

It is the choice of those who need maximum strength and power. Queen9 is distinguished by its 900 mm depth, a 20/10-thick work surface, double-crown burners, and the use of elegant stainless steel with a Scotch Brite finish.

Details that not only offer maximum functionality and aesthetics, but also take into account the practical and ergonomic needs of those who work.

The extreme freedom of composition allows top models to be combined with accessorizable oven and neutral base units, even with hygienic finishes.

With more than 350 models immediately available in the catalog, Queen9 is already ready to start giving its best.

In addition, all equipment that makes up a Queen9 kitchen is certified in compliance with international standards, including CE, GAR, AGA and others.



TECHNICAL SPECIFICATIONS

Stainless steel compartment can be accessorized with doors, drawers and heating kit.

Anti-tip guides for gastronorm containers.

Hinged door with athermic handle and magnetic lock, available with right or left opening.

Drawer mounted on stainless steel telescopic slides running on ball bearings.

Load capacity for each drawer kg 60.

Drawer with ergonomic handle

Drawers for GN 1/1

Thanks to the jet-proofing certification (IPX5) obtained through specific tests, knobs and under-knobs can be washed at the end of the working day without compromising functionality and safety.

The front bar is a comfortable foothold for the cook; it keeps a safe distance from the worktop and thus protects against accidental collisions with what is resting on the worktops and at the same time the handles.

NEUTRAL ELEMENT WITH DRAWER L600 TOP VERSION

Project
Rev.:
Zone:
Location:



CODICE
CR1018699

MODELLO
Q90NEC/610

SERIE
QUEEN 9

Technical Information

| SPECIFICATION | DATA |
|----------------------|------------------------------------|
| MATERIAL | CR1018699 |
| DEFINITION | Q90NEC/610 EL. NEUT. TOP M60 C/CAS |
| COMMERCIAL LINE | QUEEN |
| DIM. WIDTH | 600 mm |
| DIM. PRODUCTIVITY | 900 mm |
| DIM. HEIGHT | 250 mm |
| NET WEIGHT | 50 Kg |
| VOLUME (net) | 0.135 |
| PACKAGE LENGTH | 440 mm |
| PACKAGE WIDTH | 950 mm |
| PACKAGING HEIGHT | 520 mm |
| PACKAGE VOLUME | 0,300 m3 |
| GROSS PACKING WEIGHT | 51 Kg |

NEUTRAL ELEMENT WITH DRAWER L600 TOP
VERSION

| | | |
|-----------|------------|---------|
| CODICE | MODELLO | SERIE |
| CR1018699 | Q90NEC/610 | QUEEN 9 |

Project
Rev.:
Zone:
Location:



NEUTRAL ELEMENT WITH DRAWER L600 TOP VERSION

Project
Rev.:
Zone:
Location:



CODICE
CR1018699

MODELLO
Q90NEC/610

SERIE
QUEEN 9

PRODUCT'S RANGE PLUS



Thanks to the jet-proofing certification (IPX5) obtained through specific tests, knobs and under-knobs can be washed at the end of the working day without compromising functionality and safety.



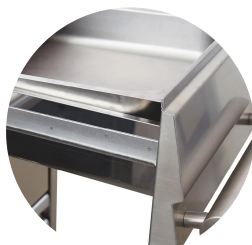
The front bar is a comfortable foothold for the cook; it keeps a safe distance from the worktop and thus protects against accidental collisions with what is resting on the worktops and at the same time the handles.



Thanks to the jet-proofing certification (IPX5) obtained through specific tests, knobs and under-knobs can be washed at the end of the working day without compromising functionality and safety.



Drawers for GN 1/1



Thanks to the jet-proofing certification (IPX5) obtained through specific tests, knobs and under-knobs can be washed at the end of the working day without compromising functionality and safety.

NEUTRAL ELEMENT WITH DRAWER L600 TOP
VERSION

| | | |
|-----------|------------|---------|
| CODICE | MODELLO | SERIE |
| CR1018699 | Q90NEC/610 | QUEEN 9 |

Project
Rev.:
Zone:
Location:



ACCESSORIES

| CODE | MODELLO | DESCRIZIONE |
|-----------|---------|-----------------------------------|
| CR1018869 | Q90VB | BOTTLE COMPARTMENT FOR MODULE 200 |