

# DIRECT STEAM GAS COMBI-OVEN - 10 X 1/1 GN - 10 X 600 X 400 • ELECTROMECHANICAL CONTROLS

Project .....  
Rev.: .....  
Zone: .....  
Location: .....



CODICE  
HOGM101E

MODELLO  
HOGM101E

SERIE  
Horizon III

## GENERAL CHARACTERISTICS

HORIZON III - Professional oven for catering.  
Perfectly smooth and airtight baking chamber with rounded edges.  
Closing door with double tempered, air gap glass and heat-reflective inner glass for less heat radiation to the operator and greater efficiency.  
Inner glass with folding opening for easy cleaning operation.  
Opening baffle for easy cleaning operation of the fan on open cabinet.  
Adjustable door hinges for optimal sealing.



## TECHNICAL SPECIFICATIONS

The control panel of the manual oven consists of selectors and knobs with an ergonomic design that makes it easy to use and intuitive. Functions are controlled by electromechanical controls, while indicator lights provide feedback on oven operation clearly and immediately.

**COOKING MODE:** Manual cooking with three cooking modes: Convection from 50°C to 260°C, Steam from 50°C to 130°C, Combined from 50°C to 260°C.

**OPERATION:** Electromechanical selector control panel with operation control lights.

**CONTROL FEATURES:** Autoreverse (automatic reversal of fan rotation direction) for perfect cooking uniformity. Manual chamber venting. LED cooking chamber lighting. IPX3 protection against water jets.

**CLEANING, ORDINARY MAINTENANCE:** Manual washing system with external hand shower (hand shower optional).

# DIRECT STEAM GAS COMBI-OVEN - 10 X 1/1 GN - 10 X 600 X 400 • ELECTROMECHANICAL CONTROLS

Project .....  
Rev.: .....  
Zone: .....  
Location: .....



CODICE  
HOGM101E

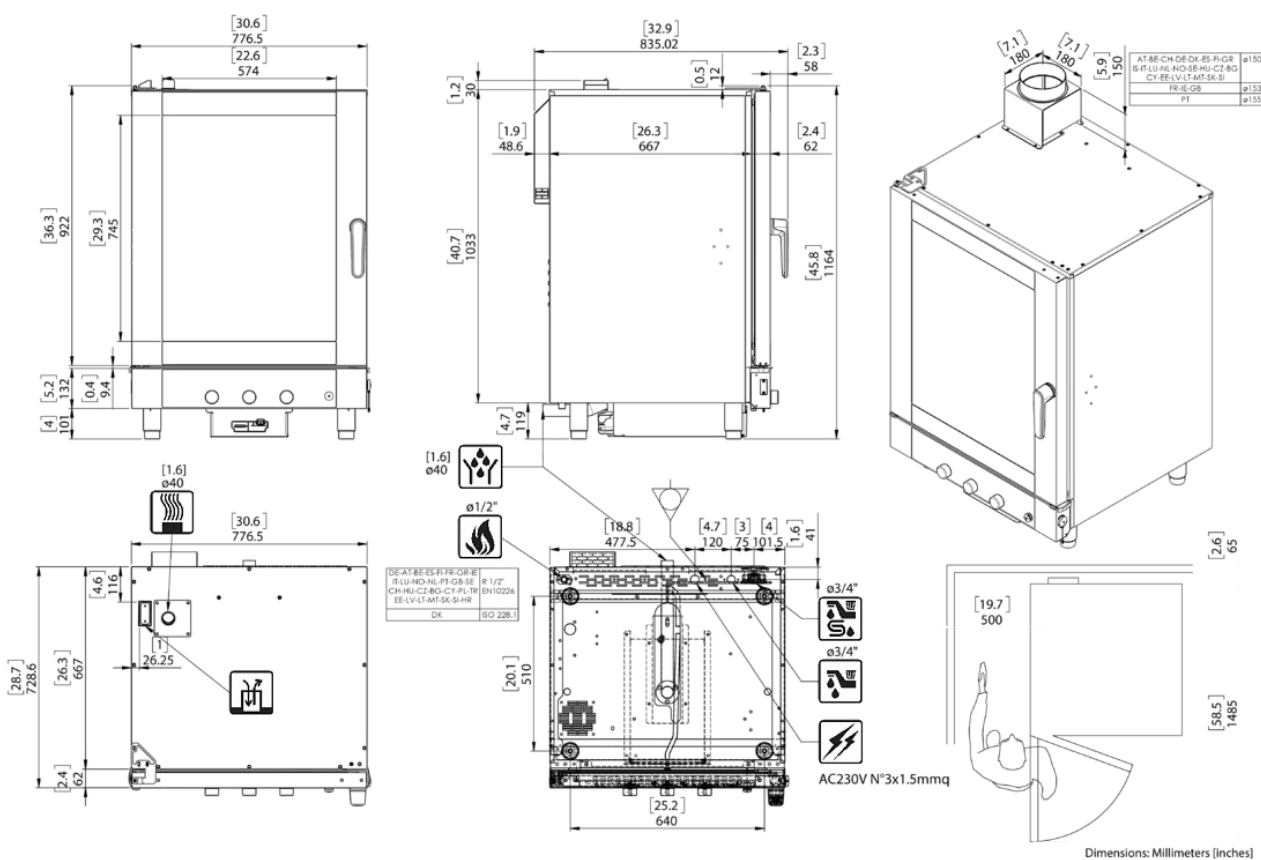
MODELLO  
HOGM101E

SERIE  
Horizon III

## Technical Information

| SPECIFICATION         | DATA                          |
|-----------------------|-------------------------------|
| MATERIAL              | HOGM101E                      |
| DEFINITION            | ICGM101E MISTO GAS 10T C/MEC. |
| COMMERCIAL LINE       | ICON E                        |
| SUPPLY                | GAS                           |
| DIM. WIDTH            | 812 mm                        |
| DIM. PRODUCTIVITY     | 725 mm                        |
| DIM. HEIGHT           | 1145 mm                       |
| NET WEIGHT            | 115 Kg                        |
| VOLUME (net)          | 0.674                         |
| PACKAGE LENGTH        | 870 mm                        |
| PACKAGE WIDTH         | 910 mm                        |
| PACKAGING HEIGHT      | 1370 mm                       |
| PACKAGE VOLUME        | 1,085 m3                      |
| GROSS PACKING WEIGHT  | 130 Kg                        |
| STANDARD POWER SUPPLY | 220-240V 1N                   |
| ELECTRICAL POWER      | 0.5 kW                        |
| GAS POWER             | 16                            |
| GAS/REFRIGERANT TYPE  | METANO "H, E" G20 20/25mbar   |
| IP GRADE              | IPX3                          |
| CERTIFIED MODEL       | MEGM101E                      |

**DIRECT STEAM GAS COMBI-OVEN - 10 X 1/1 GN - 10 X  
600 X 400 • ELECTROMECHANICAL CONTROLS**

SERIE  
Horizon III

ICGT101E/ICGM101E

I dati riportati sul presente documento sono da ritenersi non vincolanti. L'azienda si riserva di apportare modifiche tecniche in qualsiasi momento.  
The specification shown in this document are to be considered non binding. The company reserves the right to make technical change at any moment.  
Die auf dieser Unterlage angegebenen technischen Daten sind als unverbindlich anzusehen. Die Firma behält sich das Recht vor zu jeder zeit technischen Änderungen vorzunehmen.  
Les données techniques sur ce document ne doivent pas être considérées contraignantes. La société se réserve le droit d'apporter des modifications techniques à tout moment.  
Los datos técnicos indicados en el presente catalogo no son vinculantes. La empresa se reserva el derecho de efectuar modificaciones sin previo aviso.

# DIRECT STEAM GAS COMBI-OVEN - 10 X 1/1 GN - 10 X 600 X 400 • ELECTROMECHANICAL CONTROLS

Project .....  
Rev.: .....  
Zone: .....  
Location: .....



CODICE  
HOGM101E

MODELLO  
HOGM101E

SERIE  
Horizon III

## ACCESSORIES

| CODE     | MODELLO  | DESCRIZIONE   |
|----------|----------|---|
| RP04     | RP04     | SET OF CASTORS FOR STANDS, 2 OF WHICH WITH BRAKES         |
| NPT071   | NPT071   | TRAY HOLDER - INSERTABLE ON 45 MM CENTRE DISTANCE SUPPORT |
| NPT064   | NPT064   | TRAY HOLDER - INSERTABLE ON STAND                         |
| NPF04    | NPF04    | FLANGED FEET KIT FOR SUPPORTS, FOR NAVAL INSTALLATIONS    |
| KIPS101E | KIPS101E | KIT FOR OPPOSITE HINGED DOOR                              |
| KFP002   | KFP002   | FOOT STOPPER KIT  |
| ISR101E  | ISR101E  | STAINLESS STEEL BASE SUPPORT                              |
| IGP864   | IGP864   | PAIR OF BULKHEADS - 600 X 400                             |
| IGP116   | IGP116   | PAIR OF SHELF RACKS - GN - 600 X 400                      |
| ICLD     | ICLD     | HAND SHOWER COMPLETE WITH FITTINGS AND CONNECTIONS        |
| ICFX02   | ICFX02   | FAT FILTER - 2pcs   |
| IBAS051  | IBAS051  | SHATTERPROOF BAR  |
| PLG3016  | PLG3016  | PLUG - 230 V - 16A - 2P+T                                 |
| PCSM     | PCSM     | FLOWMETER 10-100  |
| PCSK     | PCSK     | PURITY C STEAM FILTER HEAD KIT                            |
| PCSF     | PCSF     | PURITY C STEAM 1100 CARTRIDGE                             |
| CBL3015  | CBL3015  | CABLE - 3 MT - 3 X 1,5 MMQ                                |
| RP004    | RP004    | WHEEL SET OF WHICH 2 WITH BRAKE                           |

# DIRECT STEAM GAS COMBI-OVEN - 10 X 1/1 GN - 10 X 600 X 400 • ELECTROMECHANICAL CONTROLS

Project .....  
Rev.: .....  
Zone: .....  
Location: .....

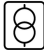



CODICE  
HOGM101E

MODELLO  
HOGM101E

SERIE  
Horizon III

## OPTIONAL

|   | MODELLO | DESCRIZIONE  |
|---|---------|--|
|  | OCBM4   | ISOLATION TRANSFORMER FOR TWO-PHASE/SINGLE-PHASE CONNECTION FOR GAS MODELS 2AC 220-240V/1N AC 230V |
|   | ISP864  | SUPPLEMENT FOR BAKERY VERSION IGP-864 TRAY HOLDER BULKHEAD   |
|   | IPS101  | OPPOSITE DOOR  |
|  | APDS    | SECURITY DOOR OPENING WITH DOUBLE CLICK  |