

# 120lt ELECTRIC MOTORISED TILTING BRATT PAN - DUPLEX TANK

Project .....  
Rev.: .....  
Zone: .....  
Location: .....



CODICE  
CR1018249T4W

MODELLO  
QT90BR/EM120-T4W

SERIE  
BARON 4.0

## GENERAL CHARACTERISTICS

From the solid foundation of Baron tradition, comes the new Queen 4.0 kitchen, even more practical, more accessorized, more technological.

An evolution in the field of professional kitchens.

Queen 4.0 is perfectly designed in detail to speed up and simplify every task of preparation, cooking, tidying up, and cleaning in the kitchen, and stand by you every day as a true ally in your work.



## TECHNICAL SPECIFICATIONS

Stainless steel outer shells and feet.

Height of the work surface adjustable from 840 to 900 mm.

Tops with a thickness of 2 mm.

Available with iron, and stainless steel tanks .

Robust, double-walled, self-balancing lids made of stainless steel to reduce heat loss.

Water loading via solenoid valve.

Cooking temperature controlled by thermostat with adjustment from 100 to 280°C.

Heating via armoured incoloy heating elements.

Large-radius tilting tank.

Data collection, operation monitoring, remote control are just some of the possibilities that connectivity puts at your disposal.

Equipment certified for low voltage directive 2014/35/EU according to the international CB scheme.

Thanks to the jet-proofing certification (IPX5) obtained through specific tests, knobs and under-knobs can be washed at the end of the working day without compromising functionality and safety.

The front bar is a comfortable foothold for the cook; it keeps a safe distance from the worktop and thus protects against accidental collisions with what is resting on the worktops and at the same time the handles.

# 120lt ELECTRIC MOTORISED TILTING BRATT PAN - DUPLEX TANK

Project .....  
Rev.: .....  
Zone: .....  
Location: .....



CODICE  
CR1018249T4W

MODELLO  
QT90BR/EM120-T4W

SERIE  
BARON 4.0

## Technical Information

| SPECIFICATION         | DATA         |
|-----------------------|--------------|
| MATERIAL              | CR1018249T4W |
| SUPPLY                | ELECTRICS    |
| DIM. WIDTH            | 1200 mm      |
| DIM. PRODUCTIVITY     | 900 mm       |
| DIM. HEIGHT           | 870 mm       |
| STANDARD POWER SUPPLY | 380-415V 3N  |
| ELECTRICAL POWER      | 13.5 kW      |

# 120lt ELECTRIC MOTORISED TILTING BRATT PAN - DUPLEX TANK

Project .....  
Rev.: .....  
Zone: .....  
Location: .....



CODICE  
CR1018249T4W

MODELLO  
QT90BR/EM120-T4W

SERIE  
BARON 4.0

## SCHEMA DI INSTALLAZIONE - INSTALLATION DIAGRAM - INSTALLATIONSPLAN - SCHÉMA D'INSTALLATION - ESQUEMA DE INSTALACION -INSTALLATIESCHEMA - IINSTALLATIONSRIITNINGAR

MISURE IN mm - DIMENSIONS IN mm - ABMESSUNGEN IN mm  
MESURES EN mm - MEDIDAS EN mm - MATEN IN mm



### Legenda - Legende - Key - Légende - Leyenda - Legenda

- E** Pressacavo entrata linea elettrica - Stopfbuchse - Electric cable stress relief  
Presse étoupe de cable él. - Pisacable - Elektrische kabelwartel
- H2O** Attacco arrivo acqua - Wasseranschluss - Water inlet  
Arrivée eau - Union de agua - Wateraansluiting  
**EN ISO 228-1 G 3/4**
- S** Scarico vasca - Wannenabflussrohr - Pan outlet  
Vidange du bac - Descarga cuba - Water toevoer

# 120lt ELECTRIC MOTORISED TILTING BRATT PAN - DUPLEX TANK

Project .....  
Rev.: .....  
Zone: .....  
Location: .....



CODICE  
CR1018249T4W

MODELLO  
QT90BR/EM120-T4W

SERIE  
BARON 4.0

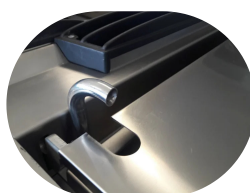
## PRODUCT'S RANGE PLUS



Possibility of setting 2 timers to control cooking. An acoustic signal warns the operator at the end of the set time.



Predisposition for core probe, for even greater cooking control. Reaching the set core temperature is signalled by an acoustic signal.



Water filling via solenoid valve and fixed tap at the top.



Hotplate temperature control via touch screen and adjustment with ergonomic knob

Industry 4.0 ready version.



Self-balancing lids.



Large-radius tilting tank.



120lt ELECTRIC MOTORISED TILTING BRATT PAN -  
DUPLEX TANK

|              |                  |           |
|--------------|------------------|-----------|
| CODICE       | MODELLO          | SERIE     |
| CR1018249T4W | QT90BR/EM120-T4W | BARON 4.0 |

Project .....  
Rev.: .....  
Zone: .....  
Location: .....



ACCESSORIES

| CODE      | MODELLO     | DESCRIZIONE                |
|-----------|-------------|----------------------------|
| CR1357499 | 4.0IOTPRO   | PRO Subscription - Cloud   |
| CR1357479 | 4.0IOTENTRY | ENTRY Subscription - Cloud |