

# NEUTRAL ELEMENT L200 TOP VERSION

Project .....  
Rev.: .....  
Zone: .....  
Location: .....



CODICE  
CR1015009

MODELLO  
Q70NE/800

SERIE  
QUEEN 7

## GENERAL CHARACTERISTICS

For those who do not want to give up the quality and solidity of a Queen stove, the Series 7 offers a 700 mm depth and more compact dimensions to fit any room, burners available in various configurations and wattages, enhanced by the refined Scotch Brite finish.

Thanks to its extreme compositional freedom, every composition is possible: you can combine Model i tops with accessorizable oven and neutral bases and hygienic finishes; create customized solutions by matching and attaching equipment back to back, sideways "flush" perfectly sealed, or "bridge" structures, offering high-level solutions that always perfectly meet the chef's needs.

As a total guarantee, all equipment that make up a Queen7 kitchen are certified in compliance with international standards, including CE, GAR, AGA and others.



## TECHNICAL SPECIFICATIONS

Stainless steel compartment Accessory with doors, drawers and heating kit.

Anti-tip guides for gastronorm containers.

Hinged door with athermic handle and magnetic lock, available with right or left opening.

Drawer mounted on stainless steel telescopic slides running on ball bearings.

Load capacity for each drawer kg 60.

# NEUTRAL ELEMENT L200 TOP VERSION

Project .....  
Rev.: .....  
Zone: .....  
Location: .....



CODICE  
CR1015009

MODELLO  
Q70NE/800

SERIE  
QUEEN 7

## Technical Information

| SPECIFICATION        | DATA                              |
|----------------------|-----------------------------------|
| MATERIAL             | CR1015009                         |
| DEFINITION           | Q70NE/800 EL. NEUT. TOP M80 S/CAS |
| COMMERCIAL LINE      | QUEEN                             |
| DIM. WIDTH           | 800 mm                            |
| DIM. PRODUCTIVITY    | 700 mm                            |
| DIM. HEIGHT          | 250 mm                            |
| NET WEIGHT           | 29.8 Kg                           |
| VOLUME (net)         | 0.14                              |
| PACKAGE LENGTH       | 850 mm                            |
| PACKAGE WIDTH        | 850 mm                            |
| PACKAGING HEIGHT     | 570 mm                            |
| PACKAGE VOLUME       | 0,412 m3                          |
| GROSS PACKING WEIGHT | 40 Kg                             |

Project .....  
Rev.: .....  
Zone: .....  
Location: .....



## NEUTRAL ELEMENT L200 TOP VERSION

CODICE  
**CR1015009**

MODELLO  
**Q70NE/800**

SERIE  
**QUEEN 7**

## NEUTRAL ELEMENT L200 TOP VERSION

Project .....  
Rev.: .....  
Zone: .....  
Location: .....



CODICE  
CR1015009

MODELLO  
Q70NE/800

SERIE  
QUEEN 7

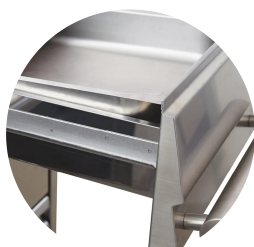
# PRODUCT'S RANGE PLUS



Modular, easy to combine and robust.



Drawer with ergonomic handle



Drawers capacity GN 1/1 bowls

## NEUTRAL ELEMENT L200 TOP VERSION

Project .....  
Rev.: .....  
Zone: .....  
Location: .....



CODICE  
CR1015009

MODELLO  
Q70NE/800

SERIE  
QUEEN 7

### ACCESSORIES

| CODE  | MODELLO | DESCRIZIONE                       |
|-------|---------|-----------------------------------|
| VB700 | VB700   | BOTTLE COMPARTMENT FOR MODULE 200 |