

Super Electric Grill M120 - Stainless Steel Grill - M120 Top Version

Project
Rev.:
Zone:
Location:



CODICE
CR1657979

MODELLO
Q90SG/E120

SERIE
QUEEN 9

GENERAL CHARACTERISTICS

It is the choice of those who need maximum strength and power. Queen9 is distinguished by its 900 mm depth, a 20/10-thick work surface, double-crown burners, and the use of elegant stainless steel with a Scotch Brite finish.

Details that not only offer maximum functionality and aesthetics, but also take into account the practical and ergonomic needs of those who work.

The extreme freedom of composition allows top models to be combined with accessorizable oven and neutral base units, even with hygienic finishes.

With more than 350 models immediately available in the catalog, Queen9 is already ready to start giving its best.

In addition, all equipment that makes up a Queen9 kitchen is certified in compliance with international standards, including CE, GAR, AGA and others.



TECHNICAL SPECIFICATIONS

Grid height adjustment device on two levels.

Canal with drainage hole and removable grease and residue collection.

Internal drawer for collecting residues.

4 Grill types available: meat, fish, mixed stainless steel and reversible cast iron meat/fish version

GRILL, HUMIDIFIER, SMOKER ACCESSORIES: Always available as accessories for all versions.

Changing the type of cooking also in the utility GAS Grill / lava stone, with dedicated accessories

In gas versions, the power is regulated by a continuously variable tap to adapt the heat of the hotplate to the type of cooking

Larger, recessed grease trough on the worktop, easier to clean and more capacious

HUMIDIFIER accessory for optimal management of several types of cooking.

Grill height adjustment for handling different types of cooking

4 Grill types available: meat, fish, mixed stainless steel and reversible cast iron meat/fish version

Electric version with tilting heating elements to facilitate the cleaning process

Super Electric Grill M120 - Stainless Steel Grill - M120 Top Version

Project
Rev.:
Zone:
Location:



CODICE
CR1657979

MODELLO
Q90SG/E120

SERIE
QUEEN 9

Technical Information

SPECIFICATION	DATA
MATERIAL	CR1657979
DEFINITION	Q90SG/E120 GRIGLIA ELE. CARNE M120 TOP
COMMERCIAL LINE	QUEEN
SUPPLY	ELECTRICS
DIM. WIDTH	1200 mm
DIM. PRODUCTIVITY	900 mm
DIM. HEIGHT	250 mm
NET WEIGHT	0.5 Kg
VOLUME (net)	0.27
PACKAGE LENGTH	1240 mm
PACKAGE WIDTH	1020 mm
PACKAGING HEIGHT	570 mm
PACKAGE VOLUME	0,727 m3
GROSS PACKING WEIGHT	1 Kg
STANDARD POWER SUPPLY	380-415V 3N
FREQUENCY	50-60 Hz
ELECTRICAL POWER	19.5 kW
IP GRADE	IPX4
CERTIFIED MODEL	Q90SG/E120

Super Electric Grill M120 - Stainless Steel Grill - M120 Top Version

Project
Rev.:
Zone:
Location:

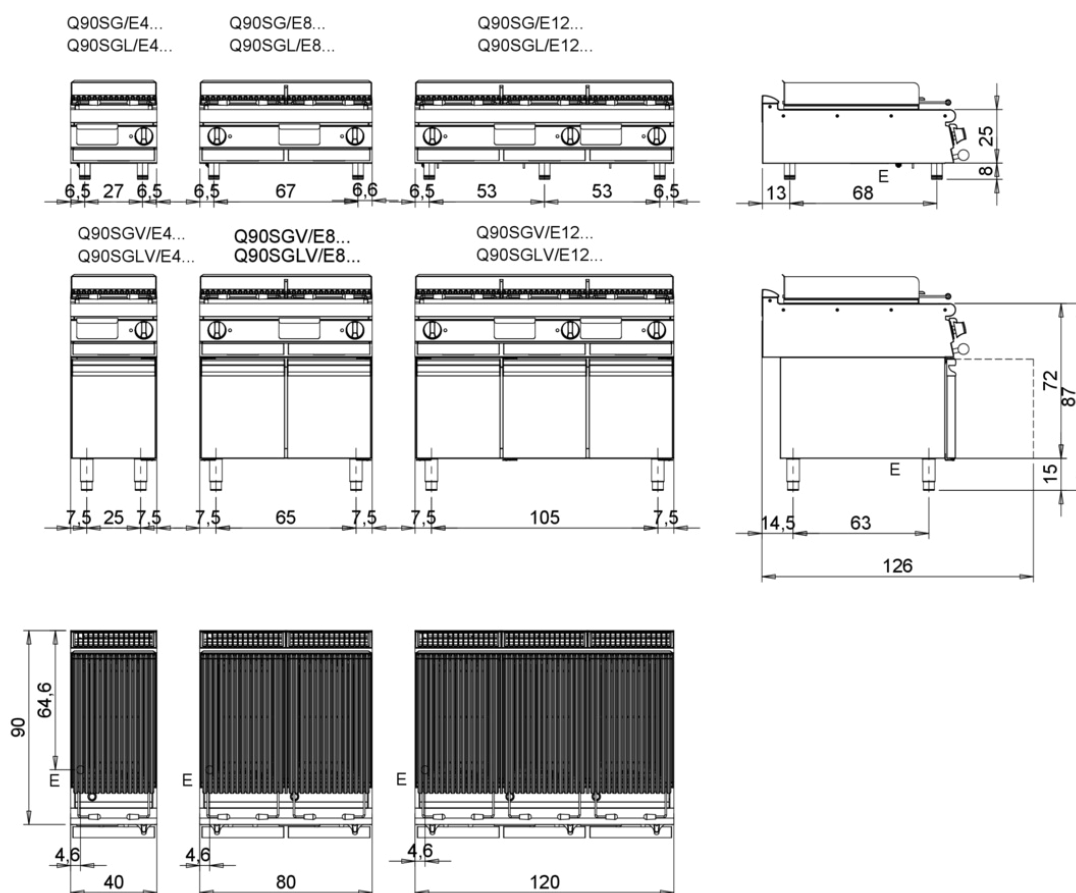


CODICE
CR1657979

MODELLO
Q90SG/E120

SERIE
QUEEN 9

MISURE IN cm - DIMENSIONS IN cm - ABMESSUNGEN IN cm- MESURES EN cm
MEDIDAS EN cm - MATEN IN cm - DIMENSIONES EN cm



Legenda - Legende - Key - Légende - Leyenda - Legenda - Legenda	
E Pressacavo entrata linea elettrica - Stopfbuchse - Electric cable stress relief - Presse étoupe de câble él - Pisacable - Elektrische kabelwartel - Entrada cabo eléctrico	G Arrivo gas - Gasanschluss - Gas connection - Arrivée gaz - Union de gas - Gasaansluiting - Ligação gás
S Attacco scarico acqua - Wasserablauf - Water outlet - Vidange de l'eau - Desaguadero - Wateraftapaansluiting - Junção descarga água	H20 Arrivo acqua - Wasseranschluss - Water inlet - Arrivée eau - Union de água - Wateraansluiting - Junção alimentação água
S1 Scarico vasca - Wannenabflusrohr - Pan outlet - Vidange du bac - Descarga cuba - Water toevoer - Descarga da cuba	A1 = Calda - Heiss - Warm - Chaude - Caliente - Warm - Morno A2 = Fredda - Kalt - Cold - Froid - Fria - Koude - Frio
S2 Valvola di depressione - Anti-depression valve - Unterdruck ventil - Soupape de dépression - Válvula de depresión - Onderdrukkelep - Válvula de depressão	L Rubinetto di livello - Level tap - Wasserhahn - Robinet de niveau - Grifo de nivel - Niveaakraan - Torneira de nível
S3 Scarico acqua intercapedine - Wasserablauf Zwischenraum - Jacket water drain Evacuation eau double envelope - Descarga de agua intersticios - Afvoer water tussenruimte - Descarga de água na marmitta com Sistema de aquecimento indirecto	
S4 Scarico - Abflusrohr - Drain - Tuyau d'évacuation - Tubo de drenaje - Aftapbuis - Tubulação de dreno	

Super Electric Grill M120 - Stainless Steel Grill - M120 Top Version

Project
Rev.:
Zone:
Location:

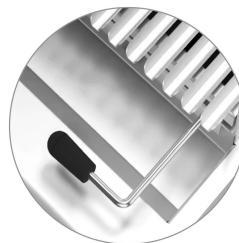


CODICE
CR1657979

MODELLO
Q90SG/E120

SERIE
QUEEN 9

PRODUCT'S RANGE PLUS



4 Grill types available: meat, fish,
mixed stainless steel and reversible
cast iron meat/fish version



Smoker that can be installed on
models M40-M80 - M120 for a
barbecue flavour menu. Made of
AISI304 stainless steel. Kit equipped
with a guide for sliding the smoker
box. The smoker box can be filled
with wood shavings or food-grade
wood pellets and replaced while the
grill is in use.



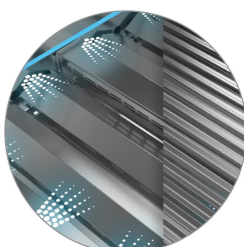
4 Types Grills available: meat, fish,
mixed stainless steel and reversible
cast iron meat/fish version



Exclusive stainless steel power-
boosting system (PBS) that
optimizes and channels the heat
generated by the heating elements
to the cooking zone.



HUMIDIFIER accessory for optimal
management of several types of
cooking.



Grill height adjustment for handling
different types of cooking



Electric version with fold-down
heating elements to facilitate the
cleaning process.

Super Electric Grill M120 - Stainless Steel Grill - M120 Top Version

Project
Rev.:
Zone:
Location:



CODICE
CR1657979

MODELLO
Q90SG/E120

SERIE
QUEEN 9

ACCESSORIES

CODE	MODELLO	DESCRIZIONE
CR1658259	Q9AF	Q90 SUPER GRILL SMOKER KIT
CR1658279	Q92GG	Cast Iron Grid M40 D9
CR1658289	Q92GTI	Stainless steel rod grille M40 D9
CR1658549	Q92GI	Stainless Grid M40 Q9
CR1658589	Q9KU12E	QUEEN 9 M120 ELECTRIC GRILL HUMIDIFIER KIT