

# GAS PASTA COOKER 2 TANKS 40 + 40 LITRES

Project .....  
Rev.: .....  
Zone: .....  
Location: .....



CODICE  
CR1018289

MODELLO  
Q90CPM/G800

SERIE  
QUEEN 9

## GENERAL CHARACTERISTICS

It is the choice of those who need maximum strength and power. Queen9 is distinguished by its 900 mm depth, a 20/10-thick work surface, double-crown burners, and the use of elegant stainless steel with a Scotch Brite finish.

Details that not only offer maximum functionality and aesthetics, but also take into account the practical and ergonomic needs of those who work.

The extreme freedom of composition allows top models to be combined with accessorizable oven and neutral base units, even with hygienic finishes.

With more than 350 models immediately available in the catalog, Queen9 is already ready to start giving its best.

In addition, all equipment that makes up a Queen9 kitchen is certified in compliance with international standards, including CE, GAR, AGA and others.



## TECHNICAL SPECIFICATIONS

Cooking tanks made of AISI 316 stainless steel (an alloy with exceptional corrosion resistance even at high temperatures) of large capacity (42 liters), molded with inner radiused corners for maximum hygiene and cleanability, dotat ion of foam expansion, with residual starch discharge device.

Safety thermostat in tank against dry running.

Gas models

Safety pressure switch to prevent empty tank operation.

Stabilized flame burners with piezo ignition of the pilot burner.

Safety tap with thermocouple and progressive adjustment of power output independently for each tank.

Electric models

Armored stainless steel heating elements inserted into the tank.

Thermal protectors of the heating unit.

Multi-position, independent power regulator for each tank.

Safety pressure switch to prevent activation of heating without water in the tank.

Non-accessible internal compartment for total user safety, closed with door for aesthetic alignment. Version with fixed panel closure available.

Manual water loading, without the use of an electrical connection

Thanks to the jet-proofing certification (IPX5) obtained through specific tests, knobs and under-knobs can be washed at the end of the working day without compromising functionality and safety.

The front bar is a comfortable foothold for the cook; it keeps a safe distance from the worktop and thus protects against accidental collisions with what is resting on the worktops and at the same time the handles.

# GAS PASTA COOKER 2 TANKS 40 + 40 LITRES

Project .....  
Rev.: .....  
Zone: .....  
Location: .....



CODICE  
CR1018289

MODELLO  
Q90CPM/G800

SERIE  
QUEEN 9

## Technical Information

SPECIFICATION	DATA
MATERIAL	CR1018289
DEFINITION	Q90CPM/G800 FULL GAS 2V.40LT M80 S/CESTI
COMMERCIAL LINE	QUEEN
SUPPLY	GAS
DIM. WIDTH	800 mm
DIM. PRODUCTIVITY	900 mm
DIM. HEIGHT	870 mm
NET WEIGHT	105 Kg
VOLUME (net)	0.626
PACKAGE LENGTH	840 mm
PACKAGE WIDTH	1020 mm
PACKAGING HEIGHT	1170 mm
PACKAGE VOLUME	1,003 m3
GROSS PACKING WEIGHT	120 Kg
GAS POWER	28
GAS POWER (G25.3/25mbar)	26,00
CERTIFIED MODEL	Q90CPM/G800

# GAS PASTA COOKER 2 TANKS 40 + 40 LITRES

Project .....  
Rev.: .....  
Zone: .....  
Location: .....



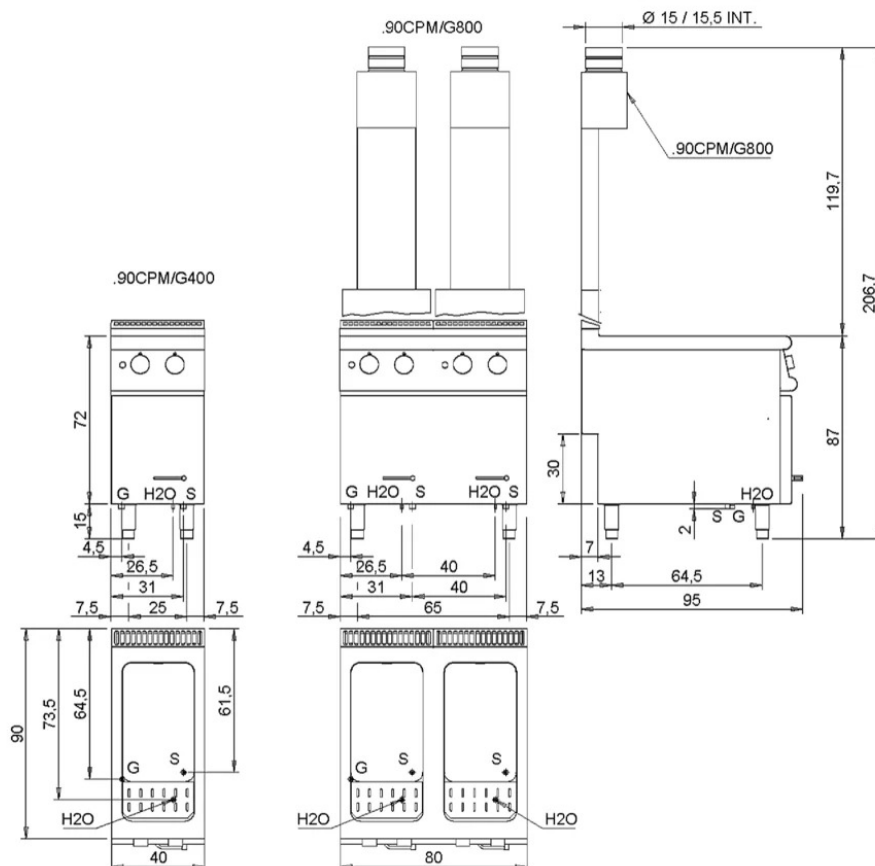
CODICE  
CR1018289

MODELLO  
Q90CPM/G800

SERIE  
QUEEN 9

## SCHEMA DI INSTALLAZIONE - INSTALLATION DIAGRAM - INSTALLATIONSPLAN - SCHÉMA D'INSTALLATION - ESQUEMA DE INSTALACION - INSTALLATIESCHEMA - INSTALLATIONSRIJNINGAR

MISURE IN cm - DIMENSIONS IN cm - ABMESSUNGEN IN cm - MESURES EN cm  
MEDIDAS EN cm - MATEN IN cm - DIMENSIONES EN cm



### Legenda - Legende - Key - Légende - Leyenda - Legenda - Legenda

<b>E</b> Pressacavo entrata linea elettrica - Stopfbuchse - Electric cable stress relief - Presse étoupe de câble él - Pisacable - Elektrische kabelwarterl - Entrada cabo eléctrico	<b>G</b> Arrivo gas - Gasanschluss - Gas connection - Arrivée gaz - Union de gas - Gasaansluiting - Ligação gás <b>EN 10226-1 R 1/2; EN ISO 228-1 G 1/2 (DK)</b>
<b>S</b> Attacco scarico acqua - Wasserablauf - Water outlet - Vidange de l'eau - Desaguadero - Wateraftapaansluiting - Junção descarga água <b>EN 10226-1 R1</b>	<b>H2O</b> Arrivo acqua - Wasseranschluss - Water inlet - Arrivée eau - Union de água - Wateraansluiting - Junção alimentação água
<b>S1</b> Scarico vasca - Wannenabflussrohr - Pan outlet - Vidange du bac - Descarga cuba - Water toevoer - Descarga da cuba	<b>A1</b> = Calda - Heiss - Warm - Chaude - Caliente - Warm - Momo <b>A2</b> = Fredda - Kalt - Cold - Froid - Fria - Koude - Frio <b>Ø=1 cm</b>
<b>S2</b> Valvola di depressione - Anti-depression valve - Unterdruck ventil - Soupape de dépression - Válvula de depresión - Onderdrukklep - Válvula de depressão	<b>L</b> Rubinetto di livello - Level tap - Wasserhahn - Robinet de niveau - Grifo de nivel - Niveaakraan - Torneira de nível
<b>S3</b> Scarico acqua intercapedine - Wasserablauf Zwischenraum - Jacket water drain Evacuation eau double enveloppe - Descarga de agua intersticios - Afvoer water tussenruimte - Descarga de água na marmitta com Sistema de aquecimento indirecto	

## GAS PASTA COOKER 2 TANKS 40 + 40 LITRES

Project .....  
Rev.: .....  
Zone: .....  
Location: .....



CODICE  
CR1018289

MODELLO  
Q90CPM/G800

SERIE  
QUEEN 9

# PRODUCT'S RANGE PLUS



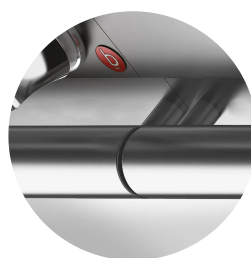
Thanks to the jet-proofing certification (IPX5) obtained through specific tests, knobs and under-knobs can be washed at the end of the working day without compromising functionality and safety.



Thanks to the jet-proofing certification (IPX5) obtained through specific tests, knobs and under-knobs can be washed at the end of the working day without compromising functionality and safety.



Safety pressure switch to prevent activation of heating without water in the tank.



The front bar is a comfortable foothold for the cook; it keeps a safe distance from the worktop and thus protects against accidental collisions with what is resting on the worktops and at the same time the handles.



Non-accessible internal compartment for total user safety, closed with door for aesthetic alignment. Version with fixed panel closure available.



Manual water loading, without the use of an electrical connection

## GAS PASTA COOKER 2 TANKS 40 + 40 LITRES

Project .....  
Rev.: .....  
Zone: .....  
Location: .....



CODICE  
CR1018289

MODELLO  
Q90CPM/G800

SERIE  
QUEEN 9

### ACCESSORIES

CODE	MODELLO	DESCRIZIONE
CR0999149	<b>GFCP40</b>	40Lt BOTTOM TANK GRID
CR0999179	<b>9KIT-A</b>	40 LITRE TUB BASKET KIT
CR0999189	<b>9KIT-B</b>	40 LITRE TUB BASKET KIT
CR0999199	<b>9KIT-C</b>	40 LITRE TUB BASKET KIT
CR0999209	<b>9KIT - D</b>	KIT 3 GN1/3 STAINLESS STEEL BASKETS WITH SIDE HANDLES
CR0999219	<b>9KIT - E</b>	KIT 2 GN1/2 STAINLESS STEEL BASKETS WITH SIDE HANDLES
CR0999109	<b>CCP16D</b>	BASKET GN1/6 RIGHT-HAND HANDLE
CR0999079	<b>CCP12</b>	BASKET GN1/2 SIDE HANDLE
CR0999089	<b>CCP13L</b>	BASKET GN1/3 SIDE HANDLE
CR0999099	<b>CCP13F</b>	BASKET GN1/3 FRONT HANDLE
CR0999119	<b>CCP16S</b>	BASKET GN1/6 LEFT HANDLE
CR0999129	<b>CCP19</b>	BASKET GN1/9 FRONT HANDLE
CR0999169	<b>CVCP40</b>	40 LITRE TANK LID