

# ELECTRIC BOILING PAN DIRECT HEATING - 150 LT

Project .....  
Rev.: .....  
Zone: .....  
Location: .....



CODICE  
CR1018109T4W

MODELLO  
QT90PF/ED150-T4W

SERIE  
BARON 4.0

## GENERAL CHARACTERISTICS

From the solid foundation of Baron tradition, comes the new Queen 4.0 kitchen, even more practical, more accessorized, more technological.

An evolution in the field of professional kitchens.

Queen 4.0 is perfectly designed in detail to speed up and simplify every task of preparation, cooking, tidying up, and cleaning in the kitchen, and stand by you every day as a true ally in your work.



## TECHNICAL SPECIFICATIONS

Stainless steel outer shells and feet.

Height of the work surface adjustable from 840 to 900 mm.

Tops with 2 mm thickness

AISI 304 stainless steel tanks with AISI 316 bottom.

Water loading by means of 2 solenoid valves, with the possibility of loading cold or hot water.

Frontal drain by means of 2" chrome-plated brass faucet.

Indirect electric version: heating with 2 sets of armoured heating elements positioned inside the cavity.

Direct electric version: heating by means of 3 stainless steel heating elements positioned externally on the bottom of the container.

Stainless steel tank with aisi 316 bottom

Possibility of hot or cold water loading

Data collection, operation monitoring, remote control are just some of the possibilities that connectivity puts at your disposal.

Equipment certified for low voltage directive 2014/35/EU according to the international CB scheme.

Thanks to the jet-proofing certification (IPX5) obtained through specific tests, knobs and under-knobs can be washed at the end of the working day without compromising functionality and safety.

The front bar is a comfortable foothold for the cook; it keeps a safe distance from the worktop and thus protects against accidental collisions with what is resting on the worktops and at the same time the handles.

# ELECTRIC BOILING PAN DIRECT HEATING - 150 LT

Project .....  
Rev.: .....  
Zone: .....  
Location: .....



CODICE  
CR1018109T4W

MODELLO  
QT90PF/ED150-T4W

SERIE  
BARON 4.0

## Technical Information

SPECIFICATION	DATA
MATERIAL	CR1018109T4W
SUPPLY	ELECTRICS
DIM. WIDTH	800 mm
DIM. PRODUCTIVITY	900 mm
DIM. HEIGHT	870 mm
STANDARD POWER SUPPLY	380-415V 3N
ELECTRICAL POWER	12 kW
CAPACITY	150

# ELECTRIC BOILING PAN DIRECT HEATING - 150 LT

Project .....  
Rev.: .....  
Zone: .....  
Location: .....



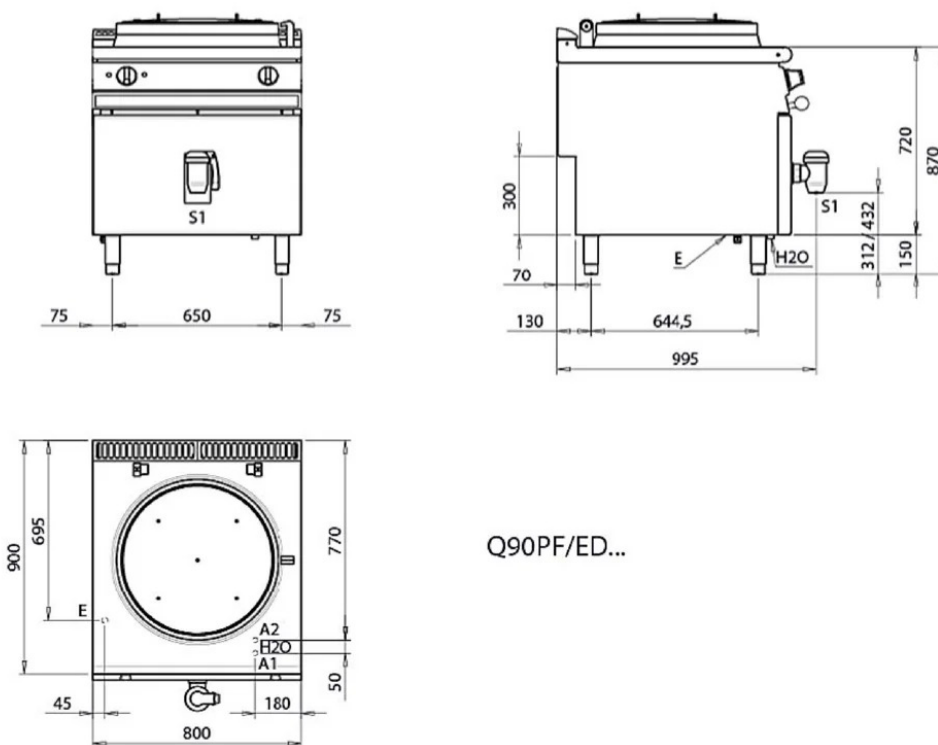
CODICE  
CR1018109T4W

MODELLO  
QT90PF/ED150-T4W

SERIE  
BARON 4.0

SCHEMA DI INSTALLAZIONE - INSTALLATION DIAGRAM - INSTALLATIONSPLAN - SCHÉMA D'INSTALLATION -  
ESQUEMA DE INSTALACION - INSTALLATIESCHEMA - INSTALLATIONSRTNINGAR

MISURE IN mm - DIMENSIONS IN mm - ABMESSUNGEN IN mm  
MESURES EN mm - MEDIDAS EN mm - MATEN IN mm



Legenda - Legende - Key - Légende - Leyenda - Legenda

- H2O Attacchi arrivo acqua - Wasseranschluss - Water inlet - Arrivée eau - Union de agua - Wateraansluiting
- A1 = Calda - Heiss - Warm - Chaude - Caliente - Warm EN ISO 228-1 G 3/4
- A2 = Fredda - Kalt - Cold - Froid - Fria - Koude EN ISO 228-1 G 3/4
- E Pressacavo entrata linea elettrica - Sopfbuchse - Electric cable stress relief  
Presse étoupe de câble él. - Elektrische kabelwartel
- S1 Scarico acqua - Wasserablauf - Water outlet - Vidange de l'eau - Desaguadero -  
Waterafwaansluiting 2"

# ELECTRIC BOILING PAN DIRECT HEATING - 150 LT

Project .....  
Rev.: .....  
Zone: .....  
Location: .....



CODICE  
CR1018109T4W

MODELLO  
QT90PF/ED150-T4W

SERIE  
BARON 4.0

## PRODUCT'S RANGE PLUS



Stainless steel tank with aisi 316 bottom



Possibility of hot or cold water loading



Industry 4.0 ready version.



Possibility of setting 2 timers to control cooking. An acoustic signal warns the operator at the end of the set time.



Power level control via touch screen and adjustment with ergonomic knob



Possibility of hot or cold water loading



Indirect pots with automatic cavity condensate drain valve  
The valve has a dual function  
- recharges the pressure inside the interspace  
- allows automatic water condensate discharge

# ELECTRIC BOILING PAN DIRECT HEATING - 150 LT

Project .....  
Rev.: .....  
Zone: .....  
Location: .....



CODICE  
CR1018109T4W

MODELLO  
QT90PF/ED150-T4W

SERIE  
BARON 4.0

## ACCESSORIES

CODE	MODELLO	DESCRIZIONE
MA97347000	<b>9C5</b>	COLANDER BASKET
MA97348000	<b>9CV5</b>	VEGETABLE STRAINER BASKET FOR POT
MA97350900	<b>9C10</b>	COLANDER BASKET
MA97351000	<b>9C15</b>	COLANDER BASKET
MA97352000	<b>9CV10</b>	VEGETABLE STRAINER BASKET FOR POT
MA97353000	<b>9CV15</b>	VEGETABLE STRAINER BASKET FOR POT
MA97354000	<b>9-I10</b>	FUNNEL FOR POT DISCHARGE
MA97355000	<b>9-I15</b>	FUNNEL FOR POT DISCHARGE
CR1357499	<b>4.0IOTPRO</b>	PRO Subscription - Cloud
CR1357479	<b>4.0IOTENTRY</b>	ENTRY Subscription - Cloud
MA97349000	<b>9-I5</b>	POWDER DISCHARGE INSTALLATION-50 Lt. HOLES Ø 10-15-36 MM