

ELECTRIC SOLID TOP ON OPEN BASE

Project
Rev.:
Zone:
Location:



CODICE
CR1016179T4W

MODELLO
QT90TPV/E800-T4W

SERIE
BARON 4.0

GENERAL CHARACTERISTICS

From the solid foundation of Baron tradition, comes the new Queen 4.0 kitchen, even more practical, more accessorized, more technological.

An evolution in the field of professional kitchens.

Queen 4.0 is perfectly designed in detail to speed up and simplify every task of preparation, cooking, tidying up, and cleaning in the kitchen, and stand by you every day as a true ally in your work.



TECHNICAL SPECIFICATIONS

Cooking plate made of polished chrome steel molybdenum thickness 1.8 cm undeformable at high temperatures and also suitable for direct cooking.

Perimeter grease trap gutter with drain hole.

Plate heating (4 zones) by means of 4 kw heating elements.

Temperature control of heating elements by thermostat, operated by means of ergonomic recessed and inclined knobs.

4 independent cooking zones.

Adjustable temperature

Data collection, operation monitoring, remote control are just some of the possibilities that connectivity puts at your disposal.

Equipment certified for low voltage directive 2014/35/EU according to the international CB scheme.

Thanks to the jet-proofing certification (IPX5) obtained through specific tests, knobs and under-knobs can be washed at the end of the working day without compromising functionality and safety.

The front bar is a comfortable foothold for the cook; it keeps a safe distance from the worktop and thus protects against accidental collisions with what is resting on the worktops and at the same time the handles.

ELECTRIC SOLID TOP ON OPEN BASE

Project
Rev.:
Zone:
Location:



CODICE
CR1016179T4W

MODELLO
QT90TPV/E800-T4W

SERIE
BARON 4.0

Technical Information

SPECIFICATION	DATA
MATERIAL	CR1016179T4W
DEFINITION	QT90TPV/E800-T4W TUTTAPIASTRA ELETT. A/G
COMMERCIAL LINE	QUEEN
SUPPLY	ELECTRICS
DIM. WIDTH	800 mm
DIM. PRODUCTIVITY	900 mm
DIM. HEIGHT	870 mm
NET WEIGHT	130.8 Kg
VOLUME (net)	0,626
PACKAGE LENGTH	860 mm
PACKAGE WIDTH	1020 mm
PACKAGING HEIGHT	1150 mm
PACKAGE VOLUME	1,010 m3
GROSS PACKING WEIGHT	146 Kg
STANDARD POWER SUPPLY	380-415V 3N
FREQUENCY	50-60 Hz
ELECTRICAL POWER	16,000 kW
IP GRADE	IPX5
CERTIFIED MODEL	Q90TPV/E800

ELECTRIC SOLID TOP ON OPEN BASE

Project
Rev.:
Zone:
Location:

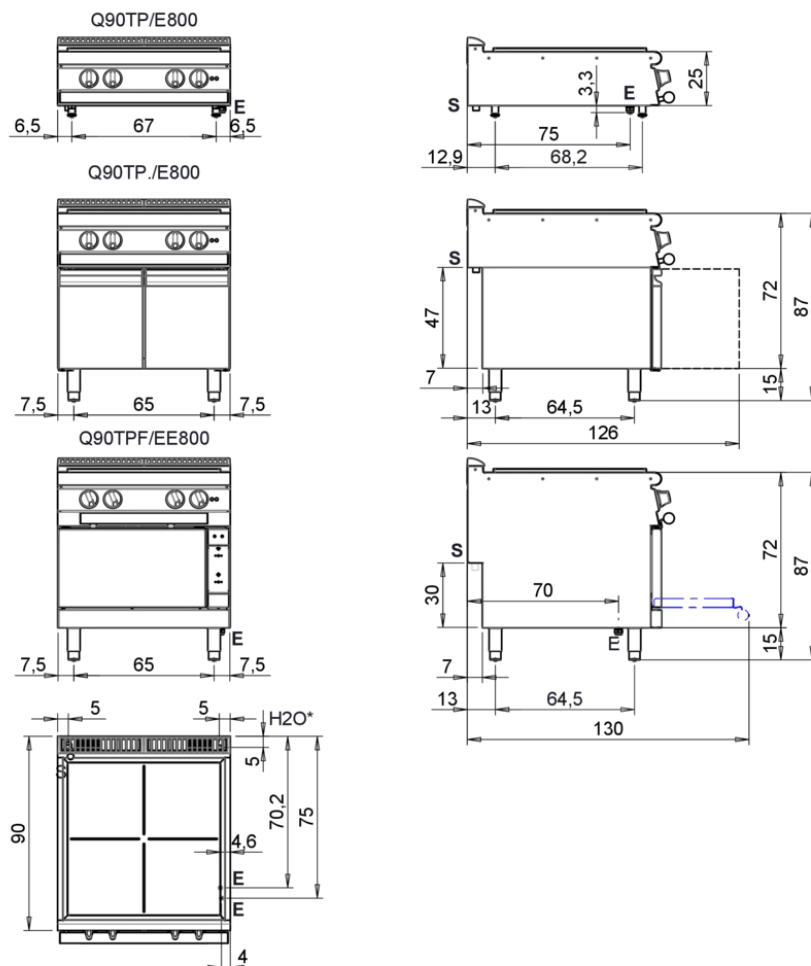


CODICE
CR1016179T4W

MODELLO
QT90TPV/E800-T4W

SERIE
BARON 4.0

MISURE IN cm - DIMENSIONS IN cm - ABMESSUNGEN IN cm- MESURES EN cm
MEDIDAS EN cm - MATEN IN cm - DIMENSIONES EN cm



Legenda - Legende - Key - Légende - Leyenda - Legenda - Legenda

E	Pressacavo entrata linea elettrica - Stopfbuchse - Electric cable stress relief - Presse étoupe de câble él - Pisacable - Elektrische kabelwartel - Entrada cabo eléctrico	G	Arrivo gas - Gasanschluss - Gas connection - Arrivée gaz - Union de gas - Gasaansluiting - Ligação gás
S	Attacco scarico acqua - Wasserablauf - Water outlet - Vidange de l'eau - Desaguadero - Wateraftapaansluiting - Junção descarga água EN ISO 228-1 G1	H20	Arrivo acqua - Wasseranschluss - Water inlet - Arrivée eau - Union de água - Wateraansluiting - Junção alimentação água
S1	Scarico vasca - Wannenabflussrohr - Pan outlet - Vidange du bac - Descarga cuba - Water toevoer - Descarga da cuba	A1 =	Calda - Heiss - Warm - Chaude - Caliente - Warm - Morno
S2	Valvola di depressione - Anti-depression valve - Unterdruck ventil - Soupape de dépression - Válvula de depresión - Onderdrukkelep - Válvula de depressão	A2 =	Fredda - Kalt - Cold - Froid - Fria - Koude - Frio EN 10226-1 R 1/2; EN ISO 228-1 G 1/2 (DK)
S3	Scarico acqua intercapedine - Wasserablauf Zwischenraum - Jacket water drain Evacuation eau double envelope - Descarga de água interstícios - Afvoer water tussenruimte - Descarga de água na marmitta com Sistema de aquecimento indirecto	L	Rubinetto di livello - Level tap - Wasserhahn - Robinet de niveau - Grifo de nivel - Niveaakraan - Torneira de nível
S4	Scarico - Abflussrohr - Drain - Tuyau d'évacuation - Tubo de drenaje - Aftapbuis - Tubulação de dreno		

ELECTRIC SOLID TOP ON OPEN BASE

Project
Rev.:
Zone:
Location:



CODICE
CR1016179T4W

MODELLO
QT90TPV/E800-T4W

SERIE
BARON 4.0

PRODUCT'S RANGE PLUS



Possibility of setting 2 timers to control cooking. An acoustic signal warns the operator at the end of the set time.

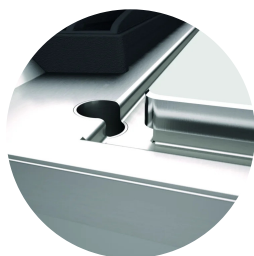


Hotplate temperature control via touch screen and adjustment with ergonomic knob



Temperature regulation from 50 to 400 °C

Industry 4.0 ready version.



Cantilevered plate with perimeter grease trough with drain hole.



4 independent cooking zones.

ELECTRIC SOLID TOP ON OPEN BASE

Project
Rev.:
Zone:
Location:



CODICE
CR1016179T4W

MODELLO
QT90TPV/E800-T4W

SERIE
BARON 4.0

ACCESSORIES

CODE	MODELLO	DESCRIZIONE
CR1357499	4.0IOTPRO	PRO Subscription - Cloud
CR1357479	4.0IOTENTRY	ENTRY Subscription - Cloud