

# NEUTRAL ELEMENT WITH DRAWER L400 TOP VERSION

Project .....  
Rev.: .....  
Zone: .....  
Location: .....



CODICE  
CR1015099

MODELLO  
Q70NEC/410

SERIE  
QUEEN 7

## GENERAL CHARACTERISTICS

For those who do not want to give up the quality and solidity of a Queen stove, the Series 7 offers a 700 mm depth and more compact dimensions to fit any room, burners available in various configurations and wattages, enhanced by the refined Scotch Brite finish.

Thanks to its extreme compositional freedom, every composition is possible: you can combine Model i tops with accessorizable oven and neutral bases and hygienic finishes; create customized solutions by matching and attaching equipment back to back, sideways "flush" perfectly sealed, or "bridge" structures, offering high-level solutions that always perfectly meet the chef's needs.

As a total guarantee, all equipment that make up a Queen7 kitchen are certified in compliance with international standards, including CE, GAR, AGA and others.



## TECHNICAL SPECIFICATIONS

Stainless steel compartment Accessory with doors, drawers and heating kit.

Anti-tip guides for gastronorm containers.

Hinged door with athermic handle and magnetic lock, available with right or left opening.

Drawer mounted on stainless steel telescopic slides running on ball bearings.

Load capacity for each drawer kg 60.

# NEUTRAL ELEMENT WITH DRAWER L400 TOP VERSION

Project .....  
Rev.: .....  
Zone: .....  
Location: .....



CODICE  
CR1015099

MODELLO  
Q70NEC/410

SERIE  
QUEEN 7

## Technical Information

SPECIFICATION	DATA
MATERIAL	CR1015099
DEFINITION	Q70NEC/410 EL. NEUT. TOP M40 C/CAS
COMMERCIAL LINE	QUEEN
DIM. WIDTH	400 mm
DIM. PRODUCTIVITY	700 mm
DIM. HEIGHT	250 mm
NET WEIGHT	22 Kg
VOLUME (net)	0.07
PACKAGE LENGTH	440 mm
PACKAGE WIDTH	850 mm
PACKAGING HEIGHT	550 mm
PACKAGE VOLUME	0,206 m3
GROSS PACKING WEIGHT	28 Kg

NEUTRAL ELEMENT WITH DRAWER L400 TOP  
VERSION

CODICE	MODELLO	SERIE
CR1015099	Q70NEC/410	QUEEN 7

Project .....  
Rev.: .....  
Zone: .....  
Location: .....



## NEUTRAL ELEMENT WITH DRAWER L400 TOP VERSION

Project .....  
Rev.: .....  
Zone: .....  
Location: .....



CODICE  
CR1015099

MODELLO  
Q70NEC/410

SERIE  
QUEEN 7

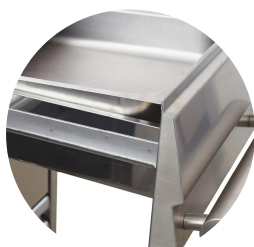
# PRODUCT'S RANGE PLUS



Modular, easy to combine and robust.



Drawer with ergonomic handle



Drawers capacity GN 1/1 bowls

NEUTRAL ELEMENT WITH DRAWER L400 TOP  
VERSION

CODICE CR1015099	MODELLO Q70NEC/410	SERIE QUEEN 7
---------------------	-----------------------	------------------

Project .....  
Rev.: .....  
Zone: .....  
Location: .....



ACCESSORIES

CODE	MODELLO	DESCRIZIONE
VB700	VB700	BOTTLE COMPARTMENT FOR MODULE 200