

# NEUTRAL ELEMENT L600 ON OPEN COMPARTMENT

Project .....  
Rev.: .....  
Zone: .....  
Location: .....



CODICE  
CR1015059

MODELLO  
Q70NEV/600

SERIE  
QUEEN 7

## GENERAL CHARACTERISTICS

For those who do not want to give up the quality and solidity of a Queen stove, the Series 7 offers a 700 mm depth and more compact dimensions to fit any room, burners available in various configurations and wattages, enhanced by the refined Scotch Brite finish.

Thanks to its extreme compositional freedom, every composition is possible: you can combine Model i tops with accessorizable oven and neutral bases and hygienic finishes; create customized solutions by matching and attaching equipment back to back, sideways "flush" perfectly sealed, or "bridge" structures, offering high-level solutions that always perfectly meet the chef's needs. As a total guarantee, all equipment that make up a Queen7 kitchen are certified in compliance with international standards, including CE, GAR, AGA and others.



## TECHNICAL SPECIFICATIONS

Stainless steel compartment Accessory with doors, drawers and heating kit.

Anti-tip guides for gastronorm containers.

Hinged door with athermic handle and magnetic lock, available with right or left opening.

Drawer mounted on stainless steel telescopic slides running on ball bearings.

Load capacity for each drawer kg 60.

# NEUTRAL ELEMENT L600 ON OPEN COMPARTMENT

Project .....  
Rev.: .....  
Zone: .....  
Location: .....



CODICE  
CR1015059

MODELLO  
Q70NEV/600

SERIE  
QUEEN 7

## Technical Information

SPECIFICATION	DATA
MATERIAL	CR1015059
DEFINITION	Q70NEV/600 EL. NEUT. A/G M60 S/CAS
COMMERCIAL LINE	QUEEN
DIM. WIDTH	600 mm
DIM. PRODUCTIVITY	700 mm
DIM. HEIGHT	870 mm
NET WEIGHT	28.8 Kg
VOLUME (net)	0.365
PACKAGE LENGTH	660 mm
PACKAGE WIDTH	850 mm
PACKAGING HEIGHT	1150 mm
PACKAGE VOLUME	0,645 m3
GROSS PACKING WEIGHT	41 Kg

Project .....  
Rev.: .....  
Zone: .....  
Location: .....



## NEUTRAL ELEMENT L600 ON OPEN COMPARTMENT

CODICE  
**CR1015059**

MODELLO  
**Q70NEV/600**

SERIE  
**QUEEN 7**

## NEUTRAL ELEMENT L600 ON OPEN COMPARTMENT

Project .....  
Rev.: .....  
Zone: .....  
Location: .....



CODICE  
CR1015059

MODELLO  
Q70NEV/600

SERIE  
QUEEN 7

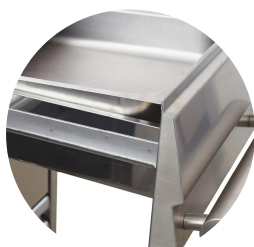
# PRODUCT'S RANGE PLUS



Modular, easy to combine and robust.



Drawer with ergonomic handle



Drawers capacity GN 1/1 bowls

## NEUTRAL ELEMENT L600 ON OPEN COMPARTMENT

Project .....  
Rev.: .....  
Zone: .....  
Location: .....



CODICE  
CR1015059

MODELLO  
Q70NEV/600

SERIE  
QUEEN 7

### ACCESSORIES

CODE	MODELLO	DESCRIZIONE
VB700	VB700	BOTTLE COMPARTMENT FOR MODULE 200