

INDIRECT GAS BOILING PAN 50lt - WITH AUTOMATIC CONDENSATE DRAIN VALVE

Project
Rev.:
Zone:
Location:



CODICE
CR1356169

MODELLO
Q70NP/GI650S

SERIE
QUEEN 7

GENERAL CHARACTERISTICS

For those who do not want to give up the quality and solidity of a Queen stove, the Series 7 offers a 700 mm depth and more compact dimensions to fit any room, burners available in various configurations and wattages, enhanced by the refined Scotch Brite finish.

Thanks to its extreme compositional freedom, every composition is possible: you can combine Model i tops with accessorizable oven and neutral bases and hygienic finishes; create customized solutions by matching and attaching equipment back to back, sideways "flush" perfectly sealed, or "bridge" structures, offering high-level solutions that always perfectly meet the chef's needs.

As a total guarantee, all equipment that make up a Queen7 kitchen are certified in compliance with international standards, including CE, GAR, AGA and others.



TECHNICAL SPECIFICATIONS

Stainless steel outer shells and feet.

Height of the work surface adjustable from 840 to 900 mm.

Tops with 2 mm thickness

AISI 304 stainless steel tanks with AISI 316 bottom.

Water loading by means of 2 solenoid valves, with the possibility of loading cold or hot water.

Frontal drain by means of 2" chrome-plated brass faucet.

Gas version: heating by means of 2 AISI 304 steel burners, positioned at the bottom of the vessel (direct heating) or in the cavity (indirect heating).

Indirect electric version: heating with 2 sets of armoured heating elements positioned inside the cavity.

Direct electric version: heating by means of 3 stainless steel heating elements positioned externally on the bottom of the container.

INDIRECT GAS BOILING PAN 50lt - WITH AUTOMATIC CONDENSATE DRAIN VALVE

Project
Rev.:
Zone:
Location:



CODICE
CR1356169

MODELLO
Q70NP/GI650S

SERIE
QUEEN 7

Technical Information

SPECIFICATION	DATA
MATERIAL	CR1356169
DEFINITION	Q70NP/GI650 S PEN. GAS M60 IND.C/VAL 50L
COMMERCIAL LINE	QUEEN
SUPPLY	MIXED
DIM. WIDTH	600 mm
DIM. PRODUCTIVITY	700 mm
DIM. HEIGHT	870 mm
NET WEIGHT	88 Kg
VOLUME (net)	0.365
PACKAGE LENGTH	640 mm
PACKAGE WIDTH	870 mm
PACKAGING HEIGHT	1100 mm
PACKAGE VOLUME	0,700 m3
GROSS PACKING WEIGHT	99 Kg
STANDARD POWER SUPPLY	220-240V 1N
FREQUENCY	50 Hz
ELECTRICAL POWER	0.275 kW
GAS POWER	10.5
GAS POWER (G25.3/25mbar)	10,00
IP GRADE	IPX4
CAPACITY	50 litri
CERTIFIED MODEL	Q70NP/GI650

INDIRECT GAS BOILING PAN 50lt - WITH AUTOMATIC
CONDENSATE DRAIN VALVE

Project
Rev.:
Zone:
Location:

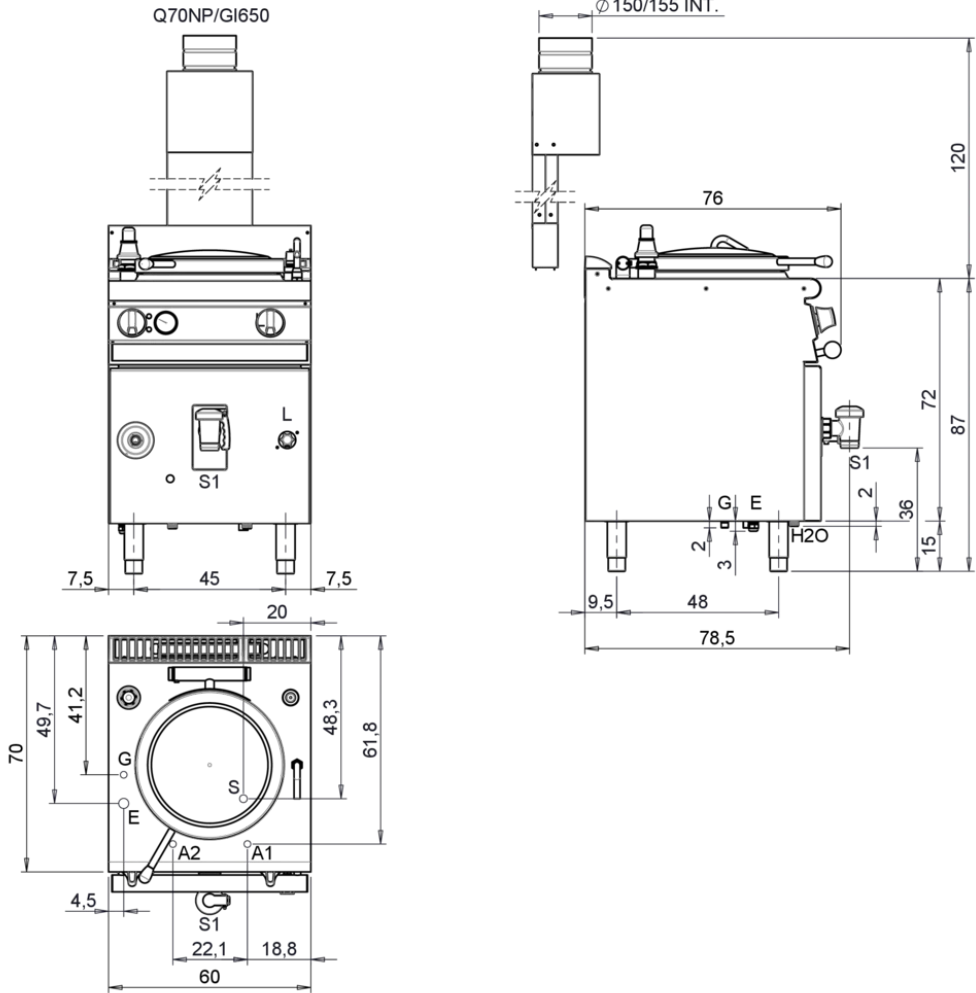


CODICE
CR1356169

MODELLO
Q70NP/GI650S

SERIE
QUEEN 7

MISURE IN cm - DIMENSIONS IN cm - ABMESSUNGEN IN cm- MESURES EN cm
MEDIDAS EN cm - MATEN IN cm - DIMENSIONES EN cm



Legenda - Legende - Key - Légende - Leyenda - Legenda - Legenda	
E Pressacavo entrata linea elettrica - Stopfbuchse - Electric cable stress relief - Presse étoupe de câble él - Pisacable - Elektrische kabelwartel - Entrada cabo eléctrico	G Arrivo gas - Gasanschluss - Gas connection - Arrivée gaz - Union de gas - Gasaansluiting - Ligação gás EN 10226-1 R 1/2; EN ISO 228-1 G 1/2 (DK)
S Attacco scarico acqua - Wasserablauf - Water outlet - Vidange de l'eau - Desaguadero - Wateraftapaansluiting - Junção descarga água EN ISO 228-1 G 3/4	H20 Arrivo acqua - Wasseranschluss - Water inlet - Arrivée eau - Union de agua - Wateraansluiting - Junção alimentação água
S1 Scarico vasca - Wannenabflusrohr - Pan outlet - Vidange du bac - Descarga cuba - Water toevoer - Descarga da cuba	A1 = Calda - Heiss - Warm - Chaude - Caliente - Warm - Morno
S2 Valvola di depressione - Anti-depression valve - Unterdruck ventil - Soupape de dépression - Válvula de depresi3n - Onderdrukklep - Válvula de depress3o	A2 = Fredda - Kalt - Cold - Froid - Fria - Koude - Frio EN ISO 228-1 G3/4
S3 Scarico acqua intercapedine - Wasserablauf Zwischenraum - Jacket water drain Evacuation eau double envelope - Descarga de agua intersticios - Afvoer water tussenruimte - Descarga de água na marmita com Sistema de aquecimento indirecto	
S4 Scarico - Abflusrohr - Drain - Tuyau d'évacuation - Tubo de drenaje - Aftapbuis - Tubula33o de dreno	L Rubinetto di livello - Level tap - Wasserhahn - Robinet de niveau - Grifo de nivel - Niveaakraan - Torneira de nivel

INDIRECT GAS BOILING PAN 50lt - WITH AUTOMATIC CONDENSATE DRAIN VALVE

Project
Rev.:
Zone:
Location:



CODICE
CR1356169

MODELLO
Q70NP/GI650S

SERIE
QUEEN 7

PRODUCT'S RANGE PLUS



Indirect pot drain valve.
The valve has a dual function
- recharges the pressure inside the
cavity
- allows automatic water
condensate discharge



Stainless steel tank with aisi 316
bottom



Possibility of hot or cold water
loading

INDIRECT GAS BOILING PAN 50lt - WITH AUTOMATIC CONDENSATE DRAIN VALVE

Project
Rev.:
Zone:
Location:



CODICE
CR1356169

MODELLO
Q70NP/GI650S

SERIE
QUEEN 7

ACCESSORIES

CODE	MODELLO	DESCRIZIONE
MA97347000	9C5	COLANDER BASKET
MA97348000	9CV5	VEGETABLE STRAINER BASKET FOR POT
CR0599730	7C8	COLAPASTA BASKET - 80 Lt. HOLES Ø 3 MM - 1 SECTOR
CR0599740	7CV8	COOLING BOWL FOR POTS - 80 Lt. HOLES Ø 6 MM - 1 SECTOR
MA97349000	9-I5	POWDER DISCHARGE INSTALLATION-50 Lt. HOLES Ø 10-15-36 MM