

# GAS FRY TOP 2/3 SMOOTH 1/3 RIBBED AISI 430 PLATE ON OPEN COMPARTMENT - THERMOSTAT- CONTROLLED

Project .....  
Rev.: .....  
Zone: .....  
Location: .....



CODICE  
CR1019669

MODELLO  
Q70FTTV/G1223

SERIE  
QUEEN 7

## GENERAL CHARACTERISTICS

For those who do not want to give up the quality and solidity of a Queen stove, the Series 7 offers a 700 mm depth and more compact dimensions to fit any room, burners available in various configurations and wattages, enhanced by the refined Scotch Brite finish.

Thanks to its extreme compositional freedom, every composition is possible: you can combine Model i tops with accessorizable oven and neutral bases and hygienic finishes; create customized solutions by matching and attaching equipment back to back, sideways "flush" perfectly sealed, or "bridge" structures, offering high-level solutions that always perfectly meet the chef's needs. As a total guarantee, all equipment that make up a Queen7 kitchen are certified in compliance with international standards, including CE, GAR, AGA and others.



## TECHNICAL SPECIFICATIONS

Plate welded to the hob that provides a larger cooking zone and eliminates dirt accumulation areas.

Even heat distribution thanks to several burners under the hotplate.

AISI430 plate.

Temperature regulation from 100°C to 280°C

Thanks to the jet-proofing certification obtained through specific tests, knobs and under-knobs can be washed at the end of the working day without compromising functionality and safety.

The front bar is a comfortable foothold for the cook; it keeps a safe distance from the worktop and thus protects against accidental collisions with what is resting on the worktops and at the same time the handles.

# GAS FRY TOP 2/3 SMOOTH 1/3 RIBBED AISI 430 PLATE ON OPEN COMPARTMENT - THERMOSTAT- CONTROLLED

Project .....  
Rev.: .....  
Zone: .....  
Location: .....



CODICE  
CR1019669

MODELLO  
Q70FTTV/G1223

SERIE  
QUEEN 7

## Technical Information

SPECIFICATION	DATA
MATERIAL	CR1019669
DEFINITION	Q70FTTV/G1223 FTG 1/3 RIG. M120 430 A/G
COMMERCIAL LINE	QUEEN
SUPPLY	GAS
DIM. WIDTH	1200 mm
DIM. PRODUCTIVITY	700 mm
DIM. HEIGHT	870 mm
NET WEIGHT	133 Kg
VOLUME (net)	0.731
PACKAGE LENGTH	440 mm
PACKAGE WIDTH	980 mm
PACKAGING HEIGHT	500 mm
PACKAGE VOLUME	0,960 m3
GROSS PACKING WEIGHT	148 Kg
GAS POWER	19.5
GAS POWER (G25.3/25mbar)	18,75
CERTIFIED MODEL	Q70FTTV/G1223

GAS FRY TOP 2/3 SMOOTH 1/3 RIBBED AISI 430 PLATE  
ON OPEN COMPARTMENT - THERMOSTAT-  
CONTROLLED

Project .....  
Rev.: .....  
Zone: .....  
Location: .....

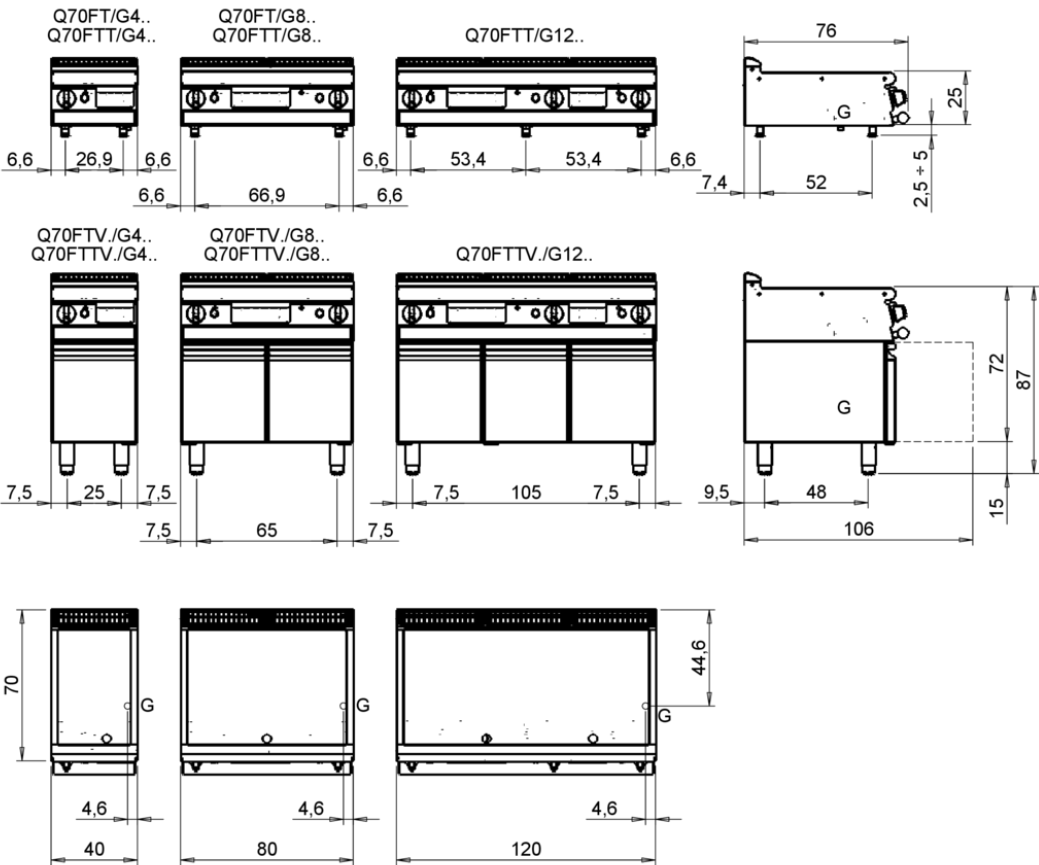


CODICE  
CR1019669

MODELLO  
Q70FTTV/G1223

SERIE  
QUEEN 7

MISURE IN cm - DIMENSIONS IN cm - ABMESSUNGEN IN cm- MESURES EN cm  
MEDIDAS EN cm - MATEN IN cm - DIMENSIONES EN cm



Legenda - Legende - Key - Légende - Leyenda - Legenda - Legenda	
<b>E</b> Pressacavo entrata linea elettrica - Stopfbuchse - Electric cable stress relief - Presse étoupe de câble él - Pisacable - Elektrische kabelwartel - Entrada cabo eléctrico	<b>G</b> Arrivo gas - Gasanschluss - Gas connection - Arrivée gaz - Union de gas - Gasaansluiting - Ligação gás <b>EN 10226-1 R 1/2; EN ISO 228-1 G 1/2 (DK)</b>
<b>S</b> Attacco scarico acqua - Wasserablauf - Water outlet - Vidange de l'eau - Desaguadero - Wateraftapaansluiting - Junção descarga água	<b>H20</b> Arrivo acqua - Wasseranschluss - Water inlet - Arrivée eau - Union de água - Wateraansluiting - Junção alimentação água
<b>S1</b> Scarico vasca - Wannenabflussrohr - Pan outlet - Vidange du bac - Descarga cuba - Water toevoer - Descarga da cuba	<b>A1 =</b> Calda - Heiss - Warm - Chaude - Caliente - Warm - Morno <b>A2 =</b> Fredda - Kalt - Cold - Froid - Fria - Koude - Frio
<b>S2</b> Valvola di depressione - Anti-depression valve - Unterdruck ventil - Soupape de dépression - Válvula de depresión - Onderdrukklep - Válvula de depressão	
<b>S3</b> Scarico acqua intercapedine - Wasserablauf Zwischenraum - Jacket water drain Evacuation eau double envelope - Descarga de água interstícios - Afvoer water tussenruimte - Descarga de água na marmita com Sistema de aquecimento indirecto	
<b>S4</b> Scarico - Abflussrohr - Drain - Tuyau d'évacuation - Tubo de drenaje - Aftapbuis - Tubulação de dreno	<b>L</b> Rubinetto di livello - Level tap - Wasserhahn - Robinet de niveau - Grifo de nivel - Niveaakraan - Torneira de nivel

**GAS FRY TOP 2/3 SMOOTH 1/3 RIBBED AISI 430 PLATE  
ON OPEN COMPARTMENT - THERMOSTAT-  
CONTROLLED**

Project .....  
Rev.: .....  
Zone: .....  
Location: .....



CODICE  
CR1019669

MODELLO  
Q70FTTV/G1223

SERIE  
QUEEN 7

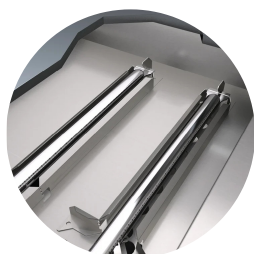
# PRODUCT'S RANGE PLUS



A 10-mm tilt of the plates toward the front of the machine allows for optimal grease outflow to the grease pan.



Plate welded to the hob that provides a larger cooking zone and eliminates dirt accumulation areas.



Even heat distribution thanks to several burners under the hotplate.

# GAS FRY TOP 2/3 SMOOTH 1/3 RIBBED AISI 430 PLATE ON OPEN COMPARTMENT - THERMOSTAT- CONTROLLED

Project .....  
Rev.: .....  
Zone: .....  
Location: .....



CODICE  
CR1019669

MODELLO  
Q70FTTV/G1223

SERIE  
QUEEN 7

## ACCESSORIES

CODE	MODELLO	DESCRIZIONE
CR1353939	70XFTP12	SPLASH GUARD FOR FRY TOP MODULE 1200
CR0592079	NXFTC4	Fry top cleaning drawer M40-M120
CR0592089	NXFTC6/8	Fry top cleaning drawer M40-M60-M80-M120
CR1354989	PRPC	Smooth plate cleaning scraper - chrome-plated
CR1356399	RPR	Striped chrome plate scraper
CR1354999	PKLR	Replacement blades (10PCS)
CR0592060	NXFTT	PLANCHA CLEANING PLUG