

KITCHEN 4 SQUARE ELECTRIC ROUND PLATES ON OPEN COMPARTMENT

Project
Rev.:
Zone:
Location:



CODICE
CR1012639

MODELLO
Q70PCV/E800

SERIE
QUEEN 7

GENERAL CHARACTERISTICS

For those who do not want to give up the quality and solidity of a Queen stove, the Series 7 offers a 700 mm depth and more compact dimensions to fit any room, burners available in various configurations and wattages, enhanced by the refined Scotch Brite finish.

Thanks to its extreme compositional freedom, every composition is possible: you can combine Model i tops with accessorizable oven and neutral bases and hygienic finishes; create customized solutions by matching and attaching equipment back to back, sideways "flush" perfectly sealed, or "bridge" structures, offering high-level solutions that always perfectly meet the chef's needs.

As a total guarantee, all equipment that make up a Queen7 kitchen are certified in compliance with international standards, including CE, GAR, AGA and others.



TECHNICAL SPECIFICATIONS

All-molded hob made from a single sheet of thick stainless steel.
Cast-iron radiant plates, fixed watertight to eliminate any liquid infiltration on electrical wiring.

6-position, ergonomic, recessed and tilted power output knobs.
Warning lights indicating "plates under tension."

Electric oven

Stainless steel cooking chamber (57.2x58x30 cm), thermally insulated and equipped with 3 anti-tip guides for Gastronorm 1/1 containers.

Stainless steel door and counter door, perfectly insulated and mounted on self-balancing hinges.

Ergonomic full-length, thermally insulated handle.

Cast-iron heating plates Ø 22 cm with 2.6 kW power, hermetically fixed to the moulded plate.

The temperature is adjusted by means of a 7-position selector switch, and a warning light indicating the activation of the heating is located on the dashboard.

Equipment certified for low voltage directive 2014/35/EU according to the international CB scheme.

Thanks to the jet-proofing certification obtained through specific tests, knobs and under-knobs can be washed at the end of the working day without compromising functionality and safety.

The front bar is a comfortable foothold for the cook; it keeps a safe distance from the worktop and thus protects against accidental collisions with what is resting on the worktops and at the same time the handles.

KITCHEN 4 SQUARE ELECTRIC ROUND PLATES ON OPEN COMPARTMENT

Project
Rev.:
Zone:
Location:



CODICE
CR1012639

MODELLO
Q70PCV/E800

SERIE
QUEEN 7

Technical Information

| SPECIFICATION | DATA |
|-----------------------|----------------------------|
| MATERIAL | CR1012639 |
| DEFINITION | Q70PCV/E800 4 P.E.L.T. A/G |
| COMMERCIAL LINE | QUEEN |
| SUPPLY | ELECTRICS |
| DIM. WIDTH | 800 mm |
| DIM. PRODUCTIVITY | 700 mm |
| DIM. HEIGHT | 870 mm |
| NET WEIGHT | 107 Kg |
| VOLUME (net) | 0.487 |
| PACKAGE LENGTH | 850 mm |
| PACKAGE WIDTH | 850 mm |
| PACKAGING HEIGHT | 1150 mm |
| PACKAGE VOLUME | 0,831 m3 |
| GROSS PACKING WEIGHT | 120 Kg |
| STANDARD POWER SUPPLY | 380-415V 3N |
| FREQUENCY | 50-60 Hz |
| ELECTRICAL POWER | 10.4 kW |
| N. FIRES/PLATES | QUATTRO FUOCHI |
| IP GRADE | IPX5 |
| CERTIFIED MODEL | Q70PCV/E800 |

KITCHEN 4 SQUARE ELECTRIC ROUND PLATES ON OPEN COMPARTMENT

Project
Rev.:
Zone:
Location:

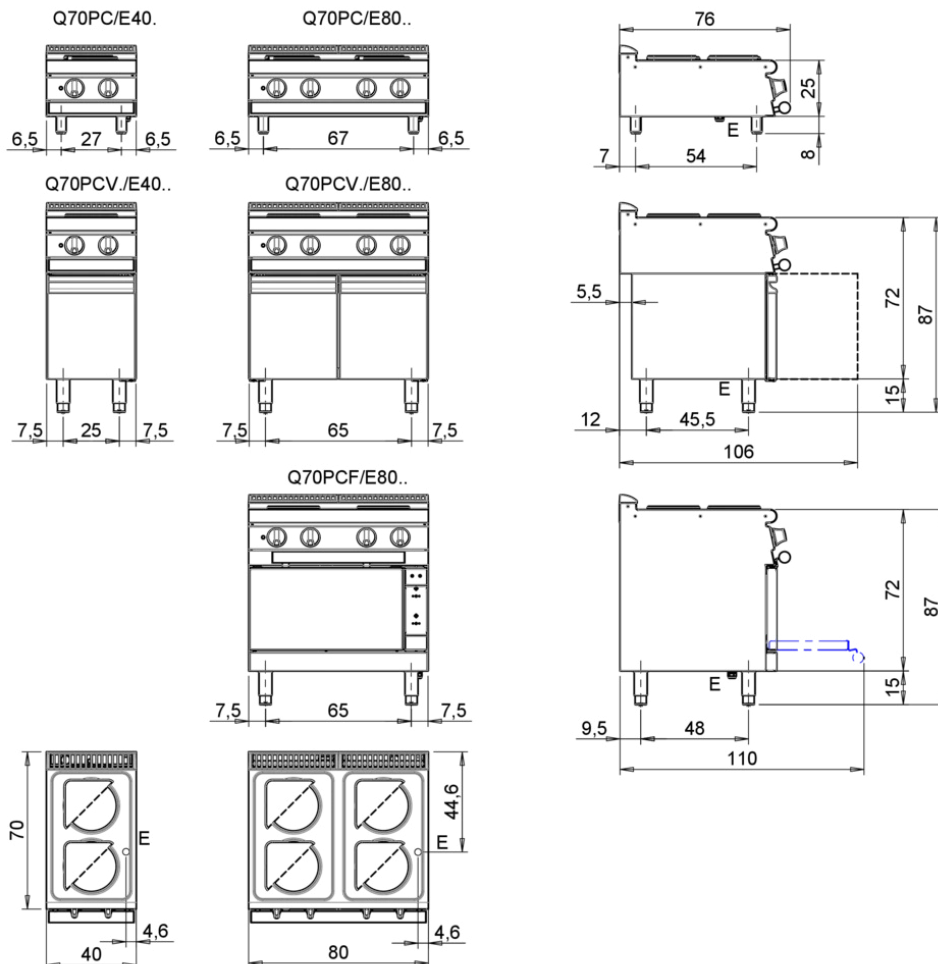


CODICE
CR1012639

MODELLO
Q70PCV/E800

SERIE
QUEEN 7

MISURE IN cm - DIMENSIONS IN cm - ABMESSUNGEN IN cm- MESURES EN cm
MEDIDAS EN cm - MATEN IN cm - DIMENSIONES EN cm



| Legenda - Legende - Key - Légende - Leyenda - Legenda - Legenda | |
|--|---|
| E Pressacavo entrata linea elettrica - Stopfbuchse - Electric cable stress relief - Presse étoupe de câble él - Pisacable - Elektrische kabelwartel - Entrada cabo eléctrico | G Arrivo gas - Gasanschluss - Gas connection - Arrivée gaz - Union de gas - Gasaansluiting - Ligação gás |
| S Attacco scarico acqua - Wasserablauf - Water outlet - Vidange de l'eau - Desaguadero - Wateraftapaansluiting - Junção descarga água | H20 Arrivo acqua - Wasseranschluss - Water inlet - Arrivée eau - Union de água - Wateraansluiting - Junção alimentação água |
| S1 Scarico vasca - Wannenabflussrohr - Pan outlet - Vidange du bac - Descarga cuba - Water toevoer - Descarga da cuba | A1 = Calda - Heiss - Warm - Chaude - Caliente - Warm - Morno A2 = Fredda - Kalt - Cold - Froid - Fria - Koude - Frio |
| S2 Valvola di depressione - Anti-depression valve - Unterdruck ventil - Soupape de dépression - Válvula de depresión - Onderdrukkelep - Válvula de depressão | L Rubinetto di livello - Level tap - Wasserhahn - Robinet de niveau - Grifo de nivel - Niveaakraan - Torneira de nível |
| S3 Scarico acqua interapedine - Wasserablauf Zwischenraum - Jacket water drain Evacuation eau double envelope - Descarga de água interstícios - Afvoer water tussenruimte - Descarga de água na marmitta com Sistema de aquecimento indirecto | |
| S4 Scarico - Abflussrohr - Drain - Tuyau d'évacuation - Tubo de drenaje - Aftapbuis - Tubulação de dreno | |

KITCHEN 4 SQUARE ELECTRIC ROUND PLATES ON OPEN COMPARTMENT

Project
Rev.:
Zone:
Location:

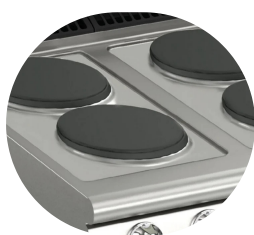


CODICE
CR1012639

MODELLO
Q70PCV/E800

SERIE
QUEEN 7

PRODUCT'S RANGE PLUS



Ø 22 cm cast-iron heating plates
with 2.6 kW power, hermetically
attached to the
flatbed.



22x22 cast iron heating plates with
2.6 kW of power, hermetically
attached to the molded top



The temperature is adjusted by
means of a 7-position selector
switch, and a warning light
indicating the activation of the
heating is located on the dashboard.