

# ELECTRIC SOLID TOP - TOP VERSION

Project .....  
Rev.: .....  
Zone: .....  
Location: .....



CODICE  
CR1016099

MODELLO  
Q90TP/E800

SERIE  
QUEEN 9

## GENERAL CHARACTERISTICS

It is the choice of those who need maximum strength and power. Queen9 is distinguished by its 900 mm depth, a 20/10-thick work surface, double-crown burners, and the use of elegant stainless steel with a Scotch Brite finish.

Details that not only offer maximum functionality and aesthetics, but also take into account the practical and ergonomic needs of those who work.

The extreme freedom of composition allows top models to be combined with accessorizable oven and neutral base units, even with hygienic finishes.

With more than 350 models immediately available in the catalog, Queen9 is already ready to start giving its best.

In addition, all equipment that makes up a Queen9 kitchen is certified in compliance with international standards, including CE, GAR, AGA and others.



## TECHNICAL SPECIFICATIONS

Chrome molybdenum polished steel cooking plate 1.8 cm thick that is crushproof at high temperatures and also suitable for direct cooking. Perimeter grease collection gutter with drain hole.

Plate heating (4 zones) by means of 4 kw heating elements.

Temperature control of heating elements by thermostat, operated by means of ergonomic recessed and inclined knobs.

Electric oven

Groups of stainless steel heating elements placed on the ceiling and under the sole of the firing chamber.

Thermostatic temperature control in the chamber from 100°C to 300°C.

Various connection possibilities.

Warning light indicating "equipment under voltage."

Indicator light indicating that the set temperature has been reached.

4 independent cooking zones.

Adjustable temperature

Equipment certified for low voltage directive 2014/35/EU according to the international CB scheme.

Thanks to the jet-proofing certification (IPX5) obtained through specific tests, knobs and under-knobs can be washed at the end of the working day without compromising functionality and safety.

The front bar is a comfortable foothold for the cook; it keeps a safe distance from the worktop and thus protects against accidental collisions with what is resting on the worktops and at the same time the handles.

## ELECTRIC SOLID TOP - TOP VERSION

Project .....  
Rev.: .....  
Zone: .....  
Location: .....



CODICE  
CR1016099

MODELLO  
Q90TP/E800

SERIE  
QUEEN 9

### Technical Information

SPECIFICATION	DATA
MATERIAL	CR1016099
DEFINITION	Q90TP/E800 TUTTAPIASTRA ELETTRICO TOP
COMMERCIAL LINE	QUEEN
SUPPLY	ELECTRICS
DIM. WIDTH	800 mm
DIM. PRODUCTIVITY	900 mm
DIM. HEIGHT	250 mm
NET WEIGHT	125 Kg
VOLUME (net)	0.18
PACKAGE LENGTH	1020 mm
PACKAGE WIDTH	840 mm
PACKAGING HEIGHT	570 mm
PACKAGE VOLUME	0,488 m3
GROSS PACKING WEIGHT	132 Kg
STANDARD POWER SUPPLY	380-415V 3N
FREQUENCY	50-60 Hz
ELECTRICAL POWER	16 kW
IP GRADE	IPX5
CERTIFIED MODEL	Q90TP/E800

# ELECTRIC SOLID TOP - TOP VERSION

Project .....  
Rev.: .....  
Zone: .....  
Location: .....

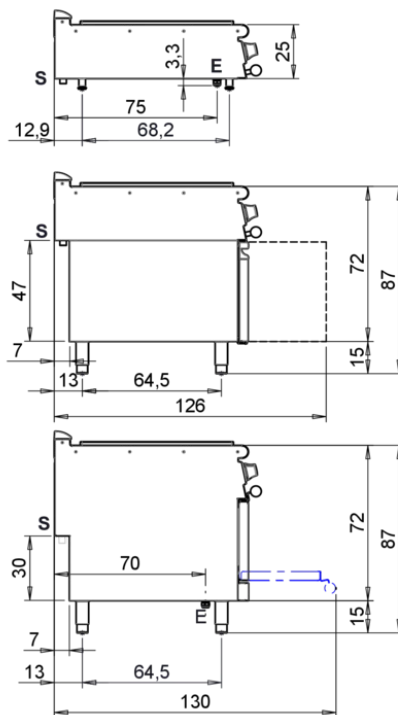
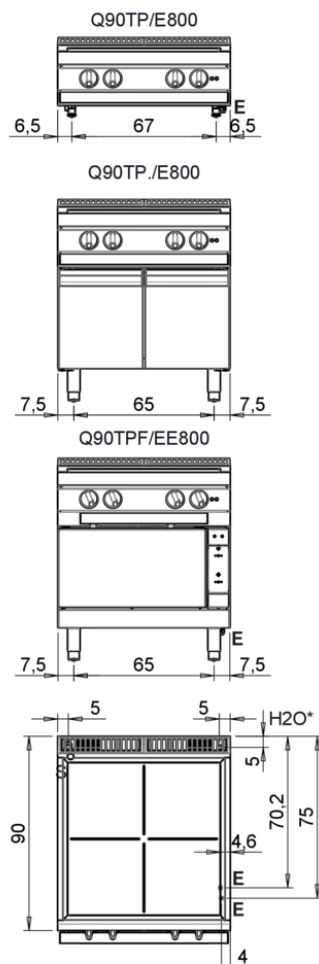


CODICE  
CR1016099

MODELLO  
Q90TP/E800

SERIE  
QUEEN 9

MISURE IN cm - DIMENSIONS IN cm - ABMESSUNGEN IN cm- MESURES EN cm  
MEDIDAS EN cm - MATEN IN cm - DIMENSIONES EN cm



Legenda - Legende - Key - Légende - Leyenda - Legenda - Legenda	
<b>E</b> Pressacavo entrata linea elettrica - Stopfbuchse - Electric cable stress relief - Presse étoupe de câble él - Pisacable - Elektrische kabelwartel - Entrada cabo eléctrico	<b>G</b> Arrivo gas - Gasanschluss - Gas connection - Arrivée gaz - Union de gas - Gasaansluiting - Ligação gás
<b>S</b> Attacco scarico acqua - Wasserablauf - Water outlet - Vidange de l'eau - Desaguadero - Wateraftapaansluiting - Junção descarga água <b>EN ISO 228-1 G1</b>	<b>H20</b> Arrivo acqua - Wasseranschluss - Water inlet - Arrivée eau - Union de agua - Wateraansluiting - Junção alimentação água
<b>S1</b> Scarico vasca - Wannenabflussrohr - Pan outlet - Vidange du bac - Descarga cuba - Water toevoer - Descarga da cuba	<b>A1</b> = Calda - Heiss - Warm - Chaude - Caliente - Warm - Morno <b>A2</b> = Fredda - Kalt - Cold - Froid - Fria - Koude - Frio <b>EN 10226-1 R 1/2; EN ISO 228-1 G 1/2 (DK)</b>
<b>S2</b> Valvola di depressione - Anti-depression valve - Unterdruck ventil - Soupape de dépression - Válvula de depresión - Onderdrukklep - Válvula de depressão	
<b>S3</b> Scarico acqua intercapedine - Wasserablauf Zwischenraum - Jacket water drain Evacuation eau double envelope - Descarga de agua intersticios - Afvoer water tussenruimte - Descarga de água na marmitta com Sistema de aquecimento indirecto	
<b>S4</b> Scarico - Abflussrohr - Drain - Tuyau d'évacuation - Tubo de drenaje - Aftapbuis - Tubulação de dreno	<b>L</b> Rubinetto di livello - Level tap - Wasserhahn - Robinet de niveau - Grifo de nivel - Niveaakraan - Torneira de nivel

## ELECTRIC SOLID TOP - TOP VERSION

Project .....  
Rev.: .....  
Zone: .....  
Location: .....

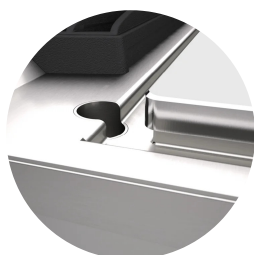


CODICE  
CR1016099

MODELLO  
Q90TP/E800

SERIE  
QUEEN 9

# PRODUCT'S RANGE PLUS



Cantilevered plate with perimeter  
grease trough with drain hole.



4 independent cooking zones.



Temperature regulation from 50 to  
400 °C