

# Super Electric Grill M80 - Stainless Steel Rod Grill - M80 on compartment

Project .....  
Rev.: .....  
Zone: .....  
Location: .....



CODICE  
CR1658059

MODELLO  
Q90SGV/E801

SERIE  
QUEEN 9

## GENERAL CHARACTERISTICS

It is the choice of those who need maximum strength and power. Queen9 is distinguished by its 900 mm depth, a 20/10-thick work surface, double-crown burners, and the use of elegant stainless steel with a Scotch Brite finish.

Details that not only offer maximum functionality and aesthetics, but also take into account the practical and ergonomic needs of those who work.

The extreme freedom of composition allows top models to be combined with accessorizable oven and neutral base units, even with hygienic finishes.

With more than 350 models immediately available in the catalog, Queen9 is already ready to start giving its best.

In addition, all equipment that makes up a Queen9 kitchen is certified in compliance with international standards, including CE, GAR, AGA and others.



## TECHNICAL SPECIFICATIONS

Grid height adjustment device on two levels.

Canal with drainage hole and removable grease and residue collection.

Internal drawer for collecting residues.

4 Grill types available: meat, fish, mixed stainless steel and reversible cast iron meat/fish version

GRILL, HUMIDIFIER, SMOKER ACCESSORIES: Always available as accessories for all versions.

Changing the type of cooking also in the utility GAS Grill / lava stone, with dedicated accessories

In gas versions, the power is regulated by a continuously variable tap to adapt the heat of the hotplate to the type of cooking

Larger, recessed grease trough on the worktop, easier to clean and more capacious

HUMIDIFIER accessory for optimal management of several types of cooking.

Grill height adjustment for handling different types of cooking

4 Grill types available: meat, fish, mixed stainless steel and reversible cast iron meat/fish version

Electric version with tilting heating elements to facilitate the cleaning process

# Super Electric Grill M80 - Stainless Steel Rod Grill - M80 on compartment

Project .....  
Rev.: .....  
Zone: .....  
Location: .....



CODICE  
CR1658059

MODELLO  
Q90SGV/E801

SERIE  
QUEEN 9

## Technical Information

SPECIFICATION	DATA
MATERIAL	CR1658059
DEFINITION	Q90SGV/E801 GRIGLIA ELE. PESCE M80 A/G
COMMERCIAL LINE	QUEEN
SUPPLY	ELECTRICS
DIM. WIDTH	800 mm
DIM. PRODUCTIVITY	900 mm
DIM. HEIGHT	870 mm
NET WEIGHT	0.5 Kg
VOLUME (net)	0.626
PACKAGE LENGTH	840 mm
PACKAGE WIDTH	1020 mm
PACKAGING HEIGHT	1160 mm
PACKAGE VOLUME	1,003 m3
GROSS PACKING WEIGHT	1 Kg
STANDARD POWER SUPPLY	380-415V 3N
FREQUENCY	50-60 Hz
ELECTRICAL POWER	13 kW
IP GRADE	IPX4
CERTIFIED MODEL	Q90SGV/E801

Super Electric Grill M80 - Stainless Steel Rod Grill - M80  
on compartment

CODICE  
CR1658059

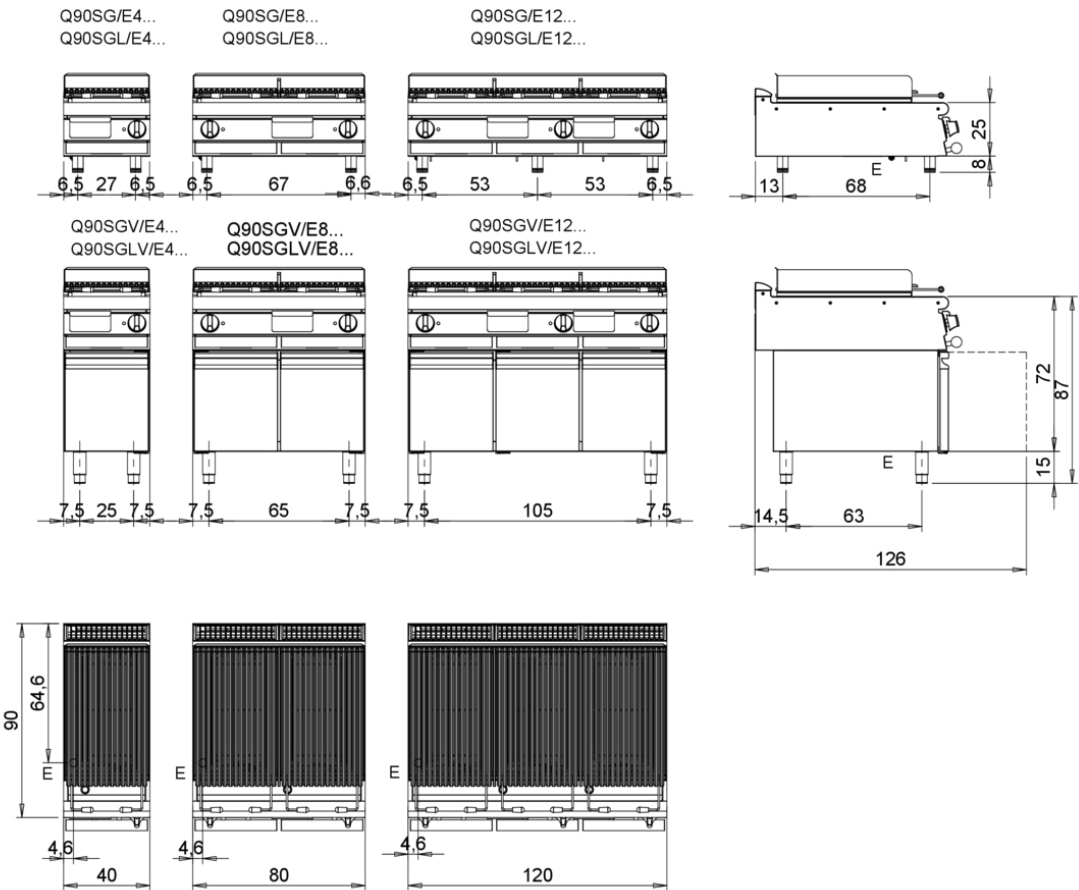
MODELLO  
Q90SGV/E801

SERIE  
QUEEN 9

Project .....  
Rev.: .....  
Zone: .....  
Location: .....



MISURE IN cm - DIMENSIONS IN cm - ABMESSUNGEN IN cm- MESURES EN cm  
MEDIDAS EN cm - MATEN IN cm - DIMENSIONES EN cm



Legenda - Legende - Key - Légende - Leyenda - Legenda - Legenda	
<b>E</b> Pressacavo entrata linea elettrica - Stopfbuchse - Electric cable stress relief - Presse étoupe de câble él - Pisacable - Elektrische kabelwartel - Entrada cabo eléctrico	<b>G</b> Arrivo gas - Gasanschluss - Gas connection - Arrivée gaz - Union de gas - Gasaansluiting - Ligação gás
<b>S</b> Attacco scarico acqua - Wasserablauf - Water outlet - Vidange de l'eau - Desaguadero - Wateraftapaansluiting - Junção descarga água	<b>H20</b> Arrivo acqua - Wasseranschluss - Water inlet - Arrivée eau - Union de água - Wateraansluiting - Junção alimentação água
<b>S1</b> Scarico vasca - Wannenabflussrohr - Pan outlet - Vidange du bac - Descarga cuba - Water toevoer - Descarga da cuba	<b>A1</b> = Calda - Heiss - Warm - Chaude - Caliente - Warm - Morno <b>A2</b> = Fredda - Kalt - Cold - Froid - Fria - Koude - Frio
<b>S2</b> Valvola di depressione - Anti-depression valve - Unterdruck ventil - Soupape de dépression - Válvula de depresión - Onderdrukkelep - Válvula de depressão	<b>L</b> Rubinetto di livello - Level tap - Wasserhahn - Robinet de niveau - Grifo de nivel - Niveaakraan - Torneira de nível
<b>S3</b> Scarico acqua intercapedine - Wasserablauf Zwischenraum - Jacket water drain Evacuation eau double envelope - Descarga de água interstícios - Afvoer water tussenruimte - Descarga de água na marmitta com Sistema de aquecimento indirecto	
<b>S4</b> Scarico - Abflussrohr - Drain - Tuyau d'évacuation - Tubo de drenaje - Aftapbuis - Tubulação de dreno	

# Super Electric Grill M80 - Stainless Steel Rod Grill - M80 on compartment

Project .....  
Rev.: .....  
Zone: .....  
Location: .....

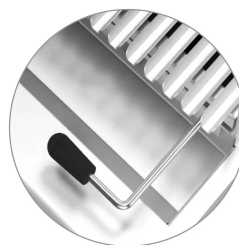


CODICE  
CR1658059

MODELLO  
Q90SGV/E801

SERIE  
QUEEN 9

## PRODUCT'S RANGE PLUS



4 Grill types available: meat, fish,  
mixed stainless steel and reversible  
cast iron meat/fish version



Smoker that can be installed on  
models M40-M80 - M120 for a  
barbecue flavour menu. Made of  
AISI304 stainless steel. Kit equipped  
with a guide for sliding the smoker  
box. The smoker box can be filled  
with wood shavings or food-grade  
wood pellets and replaced while the  
grill is in use.



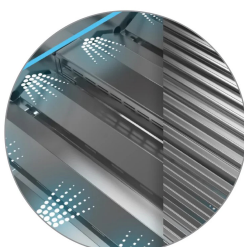
4 Types Grills available: meat, fish,  
mixed stainless steel and reversible  
cast iron meat/fish version



Exclusive stainless steel power-  
boosting system (PBS) that  
optimizes and channels the heat  
generated by the heating elements  
to the cooking zone.



HUMIDIFIER accessory for optimal  
management of several types of  
cooking.



Grill height adjustment for handling  
different types of cooking



Electric version with fold-down  
heating elements to facilitate the  
cleaning process.

# Super Electric Grill M80 - Stainless Steel Rod Grill - M80 on compartment

Project .....  
Rev.: .....  
Zone: .....  
Location: .....



CODICE  
CR1658059

MODELLO  
Q90SGV/E801

SERIE  
QUEEN 9

## ACCESSORIES

CODE	MODELLO	DESCRIZIONE
CR1658259	Q9AF	Q90 SUPER GRILL SMOKER KIT
CR1658299	Q94GG	Cast Iron Grid M80 D9
CR1658309	Q94GTI	M80 Q9 Stainless Round Grate
CR1658559	Q94GI	Stainless Grid M80 Q9
CR1658319	Q94GM	Mixed Meat/Fish Grill M80 Q9
CR1658579	Q9KU8E	QUEEN 9 M80 ELECTRIC GRILL HUMIDIFIER KIT