

## NEUTRAL BASE COMPARTMENT M20

Project .....  
Rev.: .....  
Zone: .....  
Location: .....



CODICE  
CR1354839

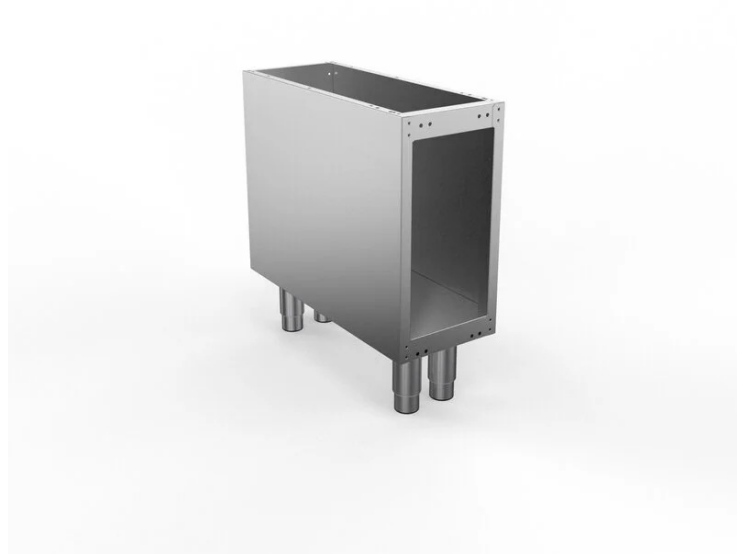
MODELLO  
Q70VA20

SERIE  
QUEEN 7

### GENERAL CHARACTERISTICS

For those who do not want to give up the quality and solidity of a Queen stove, the Series 7 offers a 700 mm depth and more compact dimensions to fit any room, burners available in various configurations and wattages, enhanced by the refined Scotch Brite finish.

Thanks to its extreme compositional freedom, every composition is possible: you can combine Model i tops with accessorizable oven and neutral bases and hygienic finishes; create customized solutions by matching and attaching equipment back to back, sideways "flush" perfectly sealed, or "bridge" structures, offering high-level solutions that always perfectly meet the chef's needs. As a total guarantee, all equipment that make up a Queen7 kitchen are certified in compliance with international standards, including CE, GAR, AGA and others.



### TECHNICAL SPECIFICATIONS

## NEUTRAL BASE COMPARTMENT M20

Project .....  
Rev.: .....  
Zone: .....  
Location: .....



CODICE  
**CR1354839**

MODELLO  
**Q70VA20**

SERIE  
**QUEEN 7**

### Technical Information

| SPECIFICATION        | DATA                            |
|----------------------|---------------------------------|
| MATERIAL             | CR1354839                       |
| DEFINITION           | Q70VA20 BASE VANO M20 S/PORTINE |
| COMMERCIAL LINE      | QUEEN                           |
| DIM. WIDTH           | 200 mm                          |
| DIM. PRODUCTIVITY    | 700 mm                          |
| DIM. HEIGHT          | 650 mm                          |
| NET WEIGHT           | 7 Kg                            |
| VOLUME (net)         | 0.091                           |
| PACKAGE LENGTH       | 420 mm                          |
| PACKAGE WIDTH        | 680 mm                          |
| PACKAGING HEIGHT     | 650 mm                          |
| PACKAGE VOLUME       | 0,100 m3                        |
| GROSS PACKING WEIGHT | 7.8 Kg                          |
| CERTIFIED MODEL      | Q70VA20                         |

Project .....  
Rev.: .....  
Zone: .....  
Location: .....



## NEUTRAL BASE COMPARTMENT M20

CODICE  
**CR1354839**

MODELLO  
**Q70VA20**

SERIE  
**QUEEN 7**